

À des fins de recherche uniquement

Anticorps Monoclonal anti-AFM

Numéro de catalogue: 66113-1-Ig



Informations de base

Numéro de catalogue:

66113-1-Ig

Numéro d'acquisition GenBank:

BC109020

Méthode de purification:

Purification par protéine G

Taille:

150ul, Concentration: 900 µg/ml by Nanodrop and 553 µg/ml by Bradford method using BSA as the standard;

Identification du gène (NCBI):

173

CloneNo.:

2G9F6

Hôte:

Mouse

Nom complet:

afamin

Dilutions recommandées:

WB 1:2000-1:10000

Isotype:

IgG1

MW calculé

599 aa, 69 kDa

IP 0.5-4.0 ug for IP and 1:500-1:1000

for WB

IHC 1:20-1:200

IF 1:200-1:800

Immunogen Catalog Number:

AG16866

MW observés:

85 kDa

Applications

Applications testées:

IF, IHC, IP, WB, ELISA

Contrôles positifs:

WB : plasma humain,

Spécificité de l'espèce:

Humain, souris

IP : tissu plasmatique humain,

IHC : tissu hépatique humain,

Remarque-IHC: il est suggéré de démasquer l'antigène avec un tampon de TE buffer pH 9.0; (*) À défaut, 'le démasquage de l'antigène peut être effectué avec un tampon citrate pH 6,0.

IF : cellules HeLa,

Informations générales

AFM (Afamin) is a member of the albumin superfamily, which comprises albumin, vitamin D-binding protein, a-fetoprotein, and afamin. AFM is present in the plasma/serum, cerebrospinal fluid, and follicular fluid, and functions as a vitamin E-binding protein. Alterations of expression level of AFM have been linked to variety of diseases like cancer.

Stockage

Stockage:

Stocker à -20°C. Stable pendant un an après l'expédition.

Tampon de stockage:

PBS avec azoture de sodium à 0,02 % et glycérol à 50 % pH 7,3

L'aliquotage n'est pas nécessaire pour le stockage à -20C

*** Les 20ul contiennent 0,1% de BSA.

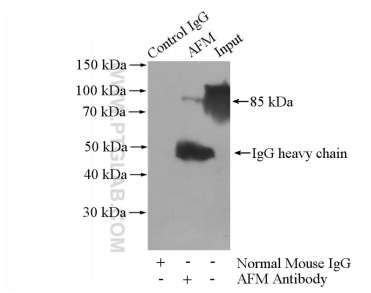
For technical support and original validation data for this product please contact:

T: 1 (888) 4PTGLAB (1-888-478-4522) (toll free in USA), or 1(312) 455-8498 (outside USA)

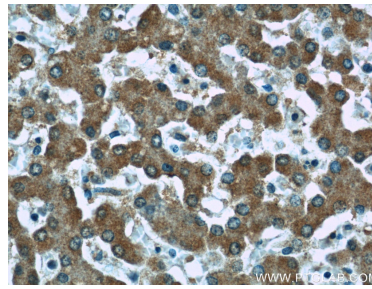
E: proteintech@ptglab.com
W: ptglab.com

This product is exclusively available under Proteintech Group brand and is not available to purchase from any other manufacturer.

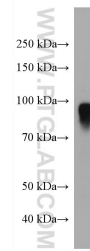
Données de validation sélectionnées



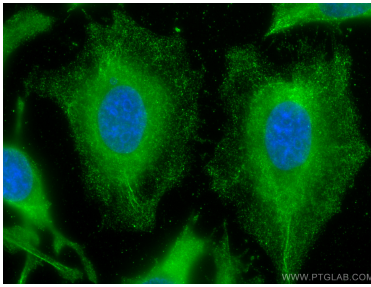
IP Result of anti-AFM (IP:66113-1-Ig, 5ug; Detection:66113-1-Ig 1:500) with human plasma lysate 4000ug.



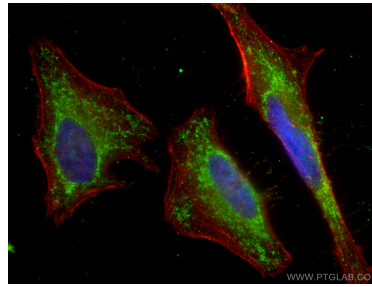
Immunohistochemical analysis of paraffin-embedded human liver tissue slide using 66113-1-Ig (AFM Antibody) at dilution of 1:50.



human plasma were subjected to SDS PAGE followed by western blot with 66113-1-Ig (AFM antibody) at dilution of 1:5000 incubated at room temperature for 1.5 hours.



Immunofluorescent analysis of (-20°C Methanol) fixed HeLa cells using AFM antibody (66113-1-Ig, Clone: 2G9F6) at dilution of 1:800 and CoraLite®488-Conjugated AffiniPure Goat Anti-Mouse IgG(H+L).



Immunofluorescent analysis of (-20°C Ethanol) fixed HeLa cells using AFM antibody (66113-1-Ig, Clone: 2G9F6) at dilution of 1:400 and CoraLite®488-Conjugated AffiniPure Goat Anti-Mouse IgG(H+L), CL594-Phalloidin (red).