

À des fins de recherche uniquement

Anticorps Monoclonal anti-TFIP11

Numéro de catalogue: 66114-1-Ig



Informations de base

Numéro de catalogue: 66114-1-Ig	Numéro d'acquisition GenBank: BC033080	Méthode de purification: Purification par protéine A
Taille: 150ul, Concentration: 953 µg/ml by Bradford method using BSA as the standard;	Identification du gène (NCBI): 24144	CloneNo.: 1A1C8
Hôte: Mouse	Nom complet: tuftelin interacting protein 11	Dilutions recommandées: WB 1:500-1:2000 IHC 1:250-1:1000 IF 1:50-1:500
Isotype: IgG2b	MW calculé 97 kDa	
Immunogen Catalog Number: AG5821	MW observés: 97 kDa	

Applications

Applications testées:

IF, IHC, WB, ELISA

Spécificité de l'espèce:

Humain

Remarque-IHC: il est suggéré de démasquer l'antigène avec un tampon de TE buffer pH 9,0; (*) À défaut, le démasquage de l'antigène peut être effectué avec un tampon citrate pH 6,0.

Contrôles positifs:

WB : cellules HeLa, cellules HEK-293, cellules HepG2, cellules Jurkat, cellules K-562, cellules LNCaP, cellules MCF-7, tissu cérébral humain, tissu testiculaire humain

IHC : tissu de cancer du sein humain, tissu de cancer de la prostate humaine, tissu de cancer du foie humain

IF : cellules HeLa,

Informations générales

TFIP11, also named as Tuftelin-interacting protein 11 or Septin and tuftelin-interacting protein 1, is a 837 amino acid protein, which contains one G-patch domain and belongs to the TFP11/STIP family. TFIP11 may localize in the nucleus and cytoplasm. TFIP11 is involved in pre-mRNA splicing, specifically in spliceosome disassembly during late-stage splicing events. TFIP11 may play a role in the differentiation of ameloblasts and odontoblasts or in the forming of the enamel extracellular matrix.

Stockage

Stockage:

Stocker à -20°C. Stable pendant un an après l'expédition.

Tampon de stockage:

PBS avec azote de sodium à 0,02 % et glycérol à 50 % pH 7,3

L'aliquotage n'est pas nécessaire pour le stockage à -20C

*** Les 20ul contiennent 0,1% de BSA.

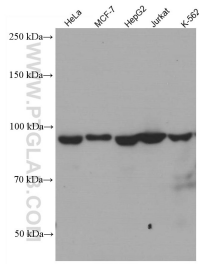
For technical support and original validation data for this product please contact:

T: 1 (888) 4PTGLAB (1-888-478-4522) (toll free in USA), or 1(312) 455-8498 (outside USA)

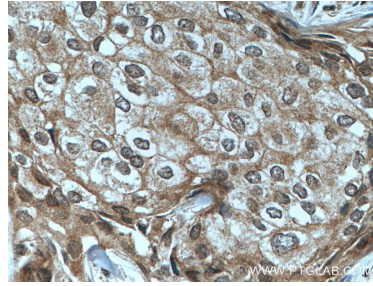
E: proteintech@ptglab.com
W: ptglab.com

This product is exclusively available under Proteintech Group brand and is not available to purchase from any other manufacturer.

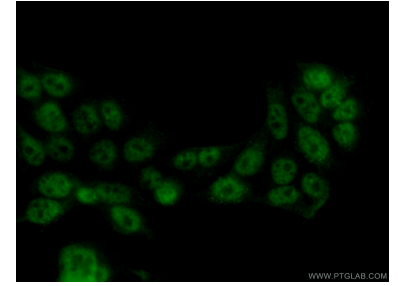
Données de validation sélectionnées



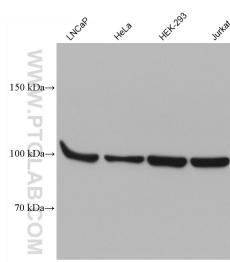
Various lysates were subjected to SDS PAGE followed by western blot with 66114-1-Ig (TFIP11 antibody) at dilution of 1:1000 incubated at room temperature for 1.5 hours.



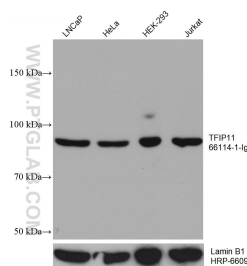
Immunohistochemical analysis of paraffin-embedded human breast cancer tissue slide using 66114-1-Ig (TFIP11 antibody) at dilution of 1:500 (under 40x lens. Heat mediated antigen retrieval with Tris-EDTA buffer (pH 9.0).



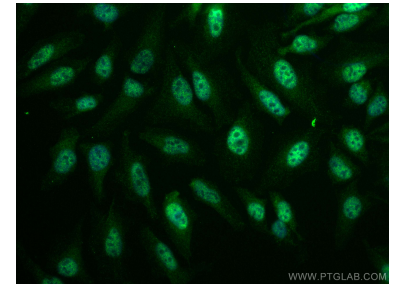
Immunofluorescent analysis of (10% Formaldehyde) fixed HeLa cells using 66114-1-Ig (TFIP11 antibody) at dilution of 1:100 and Alexa Fluor 488-conjugated AffiniPure Goat Anti-Mouse IgG(H+L).



Various lysates were subjected to SDS PAGE followed by western blot with 66114-1-Ig (TFIP11 antibody) at dilution of 1:5000 incubated at room temperature for 1.5 hours.



Various lysates were subjected to SDS PAGE followed by western blot with 66114-1-Ig (TFIP11 antibody) at dilution of 1:3000 incubated at room temperature for 1.5 hours. The membrane was stripped and rebotted with HRP-conjugated Lamin B1 Monoclonal antibody (HRP-66095) as loading control.



Immunofluorescent analysis of (4% PFA) fixed HeLa cells using TFIP11 antibody (66114-1-Ig, Clone: 1A1C8) at dilution of 1:400 and CoraLite@488-Conjugated AffiniPure Goat Anti-Mouse IgG(H+L).