

À des fins de recherche uniquement

# Anticorps Monoclonal anti-Aldolase C



Numéro de catalogue: 66120-1-Ig

## Informations de base

Numéro de catalogue: 66120-1-Ig	Numéro d'acquisition GenBank: BC003613	Méthode de purification: Purification par protéine G
Taille: 150ul , Concentration: 1040 µg/ml by Bradford method using BSA as the standard;	Identification du gène (NCBI): 230	CloneNo.: 5H7A5
Hôte: Mouse	Nom complet: aldolase C, fructose-bisphosphate	Dilutions recommandées: WB 1:5000-1:50000 IHC 1:50-1:500 IF 1:50-1:400
Isotype: IgG1	MW calculé 39 kDa	
Immunogen Catalog Number: AG6779	MW observés: 39 kDa	

## Applications

### Applications testées:

IF, IHC, WB, ELISA

### Spécificité de l'espèce:

Humain

**Remarque-IHC: il est suggéré de démasquer l'antigène avec un tampon de TE buffer pH 9,0; (\*) À défaut, 'le démasquage de l'antigène peut être 'effectué avec un tampon citrate pH 6,0.**

### Contrôles positifs:

WB : cellules HeLa, tissu cardiaque humain, tissu cérébral humain

IHC : tissu de cancer du foie humain, tissu cérébral de souris, tissu hépatique de souris

IF : cellules HepG2,

## Informations générales

Fructose-bisphosphate aldolase C (ALDOC) reversibly cleaves FBP and F1-P to glyceraldehyde 3-phosphate and dihydroxyacetone phosphate and is strongly expressed in mammalian brain together with ALDOA and is alsopresent in the heart and spleen of some species(PMID:9363598). It is involed in glycolysis as an important enzyme. Phospholipase D2 and inositol 1,4,5-triphosphate interact with ALDOC in signal transduction. Meanwhile, the protein expression of ALDOC has been reported to be regulated in brain tumor, hepatomas, and lung cancer(PMID:21548097).

## Stockage

### Stockage:

Stocker à -20°C. Stable pendant un an après l'expédition.

### Tampon de stockage:

PBS avec azoture de sodium à 0,02 % et glycérol à 50 % pH 7,3

L'aliquotage n'est pas nécessaire pour le stockage à -20C

\*\*\* Les 20ul contiennent 0,1% de BSA.

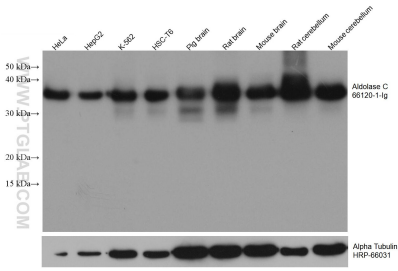
For technical support and original validation data for this product please contact:

T: 1 (888) 4PTGLAB (1-888-478-4522) (toll free  
in USA), or 1(312) 455-8498 (outside USA)

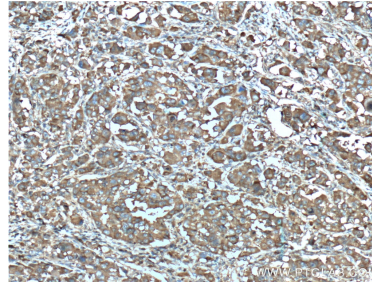
E: proteintech@ptglab.com  
W: ptglab.com

This product is exclusively available under Proteintech Group brand and is not available to purchase from any other manufacturer.

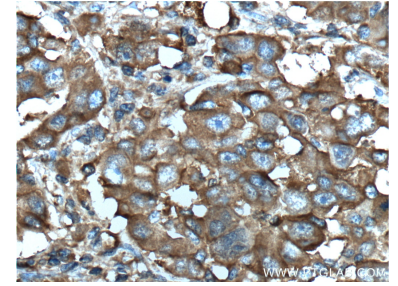
## Données de validation sélectionnées



Various lysates were subjected to SDS PAGE followed by western blot with 66120-1-Ig (Aldolase C antibody) at dilution of 1:20000 incubated at room temperature for 1.5 hours. The membrane was stripped and reblotted with HRP-conjugated Alpha Tubulin Monoclonal antibody (HRP-66031) as loading control.



Immunohistochemical analysis of paraffin-embedded human liver cancer tissue slide using 66120-1-Ig (Aldolase C antibody at dilution of 1:200 (under 10x lens). Heat mediated antigen retrieval with Tris-EDTA buffer (pH 9.0).



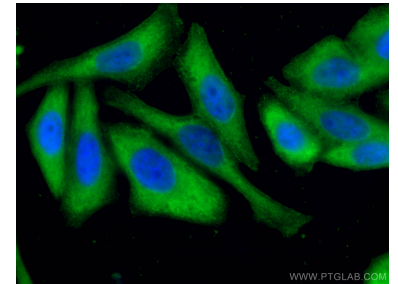
Immunohistochemical analysis of paraffin-embedded human liver cancer tissue slide using 66120-1-Ig (Aldolase C antibody at dilution of 1:200 (under 40x lens). Heat mediated antigen retrieval with Tris-EDTA buffer (pH 9.0).



Immunofluorescent analysis of HepG2 cells using 66120-1-Ig (Aldolase C antibody) at dilution of 1:50 and Rhodamine-Goat anti-Mouse IgG.



human heart tissue were subjected to SDS PAGE followed by western blot with 66120-1-Ig (Aldolase C antibody) at dilution of 1:10000 incubated at room temperature for 1.5 hours.



Immunofluorescent analysis of (-20°C Ethanol) fixed HepG2 cells using Aldolase C antibody (66120-1-Ig, Clone: 5H7A5) at dilution of 1:400 and CoraLite@488-Conjugated AffiniPure Goat Anti-Mouse IgG(H+L).