

À des fins de recherche uniquement

# Anticorps Monoclonal anti-Alpha Galactosidase A



Numéro de catalogue: 66121-1-Ig

Phare

1 Publications

## Informations de base

Numéro de catalogue: 66121-1-Ig	Numéro d'acquisition GenBank: BC002689	Méthode de purification: Purification par protéine A
Taille: 150ul, Concentration: 3900 µg/ml by Nanodrop and 2387 µg/ml by Bradford method using BSA as the standard;	Identification du gène (NCBI): 2717	CloneNo.: 2B2C5
Hôte: Mouse	Nom complet: galactosidase, alpha	Dilutions recommandées: WB 1:3000-1:10000 IHC 1:20-1:200 IF 1:20-1:200
Isotype: IgG2a	MW calculé: 49 kDa	
Immunogen Catalog Number: AG7505	MW observés: 49 kDa	

## Applications

### Applications testées:

IF, IHC, WB, ELISA

### Demandes citées:

WB

### Spécificité de l'espèce:

Humain

### Espèces citées:

Humain

**Remarque-IHC: il est suggéré de démasquer l'antigène avec un tampon de TE buffer pH 9,0; (\*) A défaut, 'le démasquage de l'antigène peut être 'effectué avec un tampon citrate pH 6,0.**

### Contrôles positifs:

WB : cellules HeLa, cellules A431, cellules HEK-293, cellules HepG2, cellules LNCaP, tissu rénal humain

IHC : tissu rénal humain, tissu hépatique humain

IF : cellules HepG2,

## Informations générales

GLA, also named as Melibiase and Alpha-galactosidase A, belongs to the glycosyl hydrolase 27 family. It hydrolyzes terminal, non-reducing alpha-D-galactose residues in alpha-D-galactosides, including galactose oligosaccharides, galactomannans and galactolipids. Fabry disease is an X-linked lysosomal storage disorder resulting from the deficient activity of GLA. Enzyme replacement therapy (ERT) with GLA is currently the most effective therapeutic strategy for patients with Fabry disease, a lysosomal storage disease.

## Publications notables

Autrice	Pubmed ID	Journal	Application
Sebastian Boland	36207292	Nat Commun	WB

## Stockage

### Stockage:

Stocker à -20°C. Stable pendant un an après l'expédition.

### Tampon de stockage:

PBS avec azoture de sodium à 0,02 % et glycérol à 50 % pH 7,3

L'aliquotage n'est pas nécessaire pour le stockage à -20C

\*\*\* Les 20ul contiennent 0,1% de BSA.

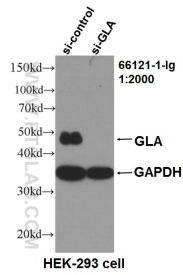
For technical support and original validation data for this product please contact:

T: 1 (888) 4PTGLAB (1-888-478-4522) (toll free in USA), or 1(312) 455-8498 (outside USA)

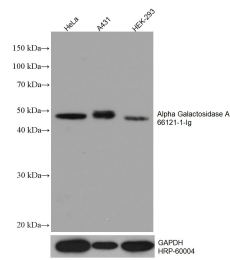
E: proteintech@ptglab.com  
W: ptglab.com

This product is exclusively available under Proteintech Group brand and is not available to purchase from any other manufacturer.

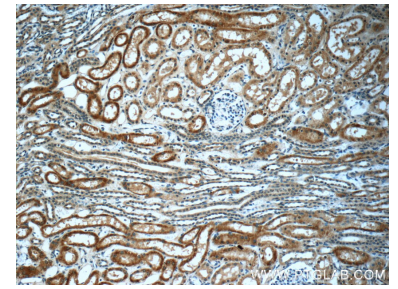
## Données de validation sélectionnées



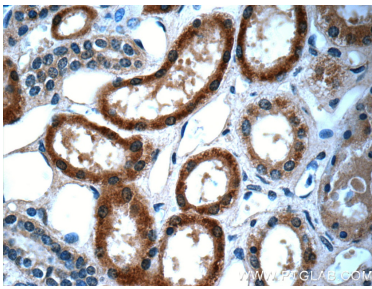
WB result of GLA antibody (66121-1-Ig, 1:2000) with si-Control and si-GLA transfected HEK293 cells..



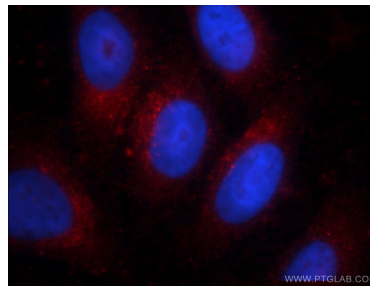
Various lysates were subjected to SDS PAGE followed by western blot with 66121-1-Ig (Alpha galactosidase A antibody) at dilution of 1:20000 incubated at room temperature for 1.5 hours. The membrane was stripped and reblotted with HRP-conjugated GAPDH Monoclonal antibody (HRP-60004) as loading control.



Immunohistochemical analysis of paraffin-embedded human kidney tissue slide using 66121-1-Ig (Alpha galactosidase A antibody at dilution of 1:50 (under 10x lens).



Immunohistochemical analysis of paraffin-embedded human kidney tissue slide using 66121-1-Ig (Alpha galactosidase A antibody at dilution of 1:50 (under 40x lens).



Immunofluorescent analysis of HepG2 cells using 66121-1-Ig (Alpha galactosidase A antibody) at dilution of 1:50 and Rhodamine-Goat anti-Mouse IgG.