

À des fins de recherche uniquement

# Anticorps Monoclonal anti-RAC1

Numéro de catalogue: 66122-1-Ig

Phare

27 Publications



## Informations de base

Numéro de catalogue:

66122-1-Ig

Numéro d'acquisition GenBank:

BC004247

Méthode de purification:

Purification par protéine A

Taille:

150ul, Concentration: 1235 µg/ml by Nanodrop and 700 µg/ml by Bradford method using BSA as the standard;

Identification du gène (NCBI):

5879

CloneNo.:

4A4B11

Hôte:

Mouse

Nom complet:

ras-related C3 botulinum toxin substrate 1 (rho family, small GTP binding protein Rac1)

Dilutions recommandées:

WB 1:1000-1:5000

IP 0.5-4.0 µg for IP and 1:500-1:1000 for WB

Isotype:

IgG2b

MW calculé

21 kDa

IHC 1:50-1:500

IF 1:50-1:500

Immunogen Catalog Number:

AG17779

MW observés:

21 kDa

## Applications

Applications testées:

IF, IHC, IP, WB, ELISA

Demandes citées:

CoIP, IF, IHC, IP, PLA, WB

Spécificité de l'espèce:

Humain, rat, souris

Espèces citées:

Humain, porc, rat, souris

**Remarque-IHC: il est suggéré de démasquer l'antigène avec un tampon de TE buffer pH 9,0; (\*) A défaut, 'le démasquage de l'antigène peut être 'effectué avec un tampon citrate pH 6,0.**

Contrôles positifs:

WB : cellules HEK-293, cellules HeLa, cellules HL-60, cellules HSC-T6, cellules HUVEC, cellules NIH/3T3, cellules RAW 264.7, tissu cérébral humain

IP : cellules HL-60, cellules HL-60, cellules HSC-T6, cellules HUVEC, cellules NIH/3T3, cellules RAW 264.7

IHC : tissu de cancer du côlon humain,

IF : cellules NIH/3T3, cellules HeLa

## Informations générales

RAC1b, also named as TC25, belongs to the small GTPase superfamily and Rho family. RAC1 is a plasma membrane-associated small GTPase which cycles between active GTP-bound and inactive GDP-bound states. In its active state, it binds to a variety of effector proteins to regulate cellular responses such as secretory processes, phagocytosis of apoptotic cells, epithelial cell polarization and growth-factor induced formation of membrane ruffles.

## Publications notables

Autrice	Pubmed ID	Journal	Application
Qing Guan	36211372	Front Immunol	IF
Yu-Yuan Zhang	36259516	J Biol Chem	WB
Teng Zhou	25212524	Biomaterials	WB

## Stockage

Stockage:

Stocker à -20°C. Stable pendant un an après l'expédition.

Tampon de stockage:

PBS avec azoture de sodium à 0,02 % et glycérol à 50 % pH 7,3

L'aliquotage n'est pas nécessaire pour le stockage à -20C

\*\*\* Les 20ul contiennent 0,1% de BSA.

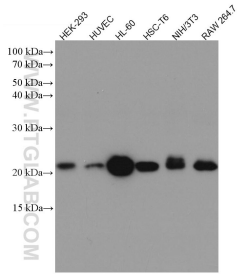
For technical support and original validation data for this product please contact:

T: 1 (888) 4PTGLAB (1-888-478-4522) (toll free in USA), or 1(312) 455-8498 (outside USA)

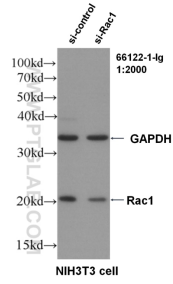
E: proteintech@ptglab.com  
W: ptglab.com

This product is exclusively available under Proteintech Group brand and is not available to purchase from any other manufacturer.

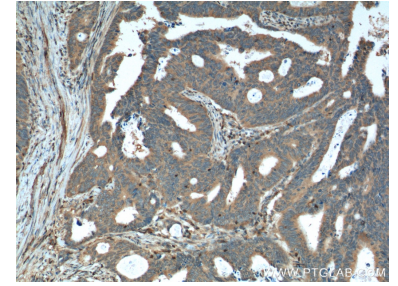
## Données de validation sélectionnées



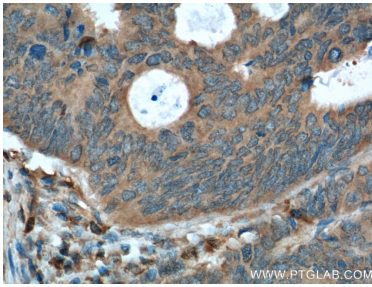
Various lysates were subjected to SDS PAGE followed by western blot with 66122-1-Ig (Rac1 antibody) at dilution of 1:5000 incubated at room temperature for 1.5 hours.



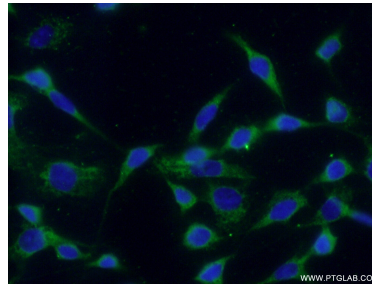
WB result of RAC1 antibody (66122-1-Ig, 1:2000) with si-control and si-RAC1 transfected NIH3T3 cells.



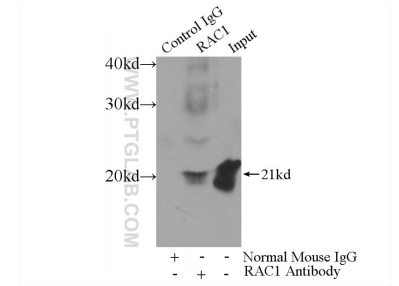
Immunohistochemical analysis of paraffin-embedded human colon cancer tissue slide using 66122-1-Ig (RAC1 Antibody) at dilution of 1:400 (under 10x lens).



Immunohistochemical analysis of paraffin-embedded human colon cancer tissue slide using 66122-1-Ig (RAC1 Antibody) at dilution of 1:400 (under 40x lens).



Immunofluorescent analysis of (-20°C Ethanol ) fixed NIH/3T3 cells using 66122-1-Ig(Rac1 antibody) at dilution of 1:100 and Alexa Fluor 488-conjugated AffiniPure Goat Anti-Mouse IgG(H+L).



IP Result of anti-RAC1 (IP:66122-1-Ig, 3ug; Detection:66122-1-Ig 1:700) with HL-60 cells lysate 4000ug.