

À des fins de recherche uniquement

Anticorps Monoclonal anti-Kininogen 1



Numéro de catalogue: 66123-1-Ig

Informations de base

Numéro de catalogue: 66123-1-Ig	Numéro d'acquisition GenBank: BC060039	Méthode de purification: Purification par protéine G
Taille: 150ul , Concentration: 1000 µg/ml by Bradford method using BSA as the standard;	Identification du gène (NCBI): 3827	CloneNo.: 10E8D11
Hôte: Mouse	Nom complet: kininogen 1	Dilutions recommandées: WB 1:5000-1:20000 IHC 1:50-1:500 IF 1:200-1:800
Isotype: IgG1	MW calculé 644 aa, 72 kDa	
Immunogen Catalog Number: AG19233	MW observés: 68 kDa	

Applications

Applications testées:

IF, IHC, WB, ELISA

Spécificité de l'espèce:

Humain

Remarque-IHC: il est suggéré de démasquer l'antigène avec un tampon de TE buffer pH 9,0; (*) À défaut, le démasquage de l'antigène peut être effectué avec un tampon citrate pH 6,0.

Contrôles positifs:

WB : tissu cardiaque humain, tissu placentaire humain, tissu plasmatique humain

IHC : tissu de cancer du sein humain, tissu de tumeur ovarienne humain

IF : cellules HeLa,

Informations générales

Kininogens are inhibitors of thiol proteases. Kininogen 1 plays important role in Kinin-kallikrein system. This gene is translated into High-molecular weight kininogen (HMWK) and low-molecular weight kininogen (LMWK) after alternative splicing. HMWK is produced by the liver together with prekallikrein. It acts mainly as a cofactor on coagulation and inflammation, and has no intrinsic catalytic activity. LMWK is produced locally by numerous tissues, and secreted together with tissue kallikrein.

Stockage

Stockage:

Stocker à -20°C. Stable pendant un an après l'expédition.

Tampon de stockage:

PBS avec azoture de sodium à 0,02 % et glycérol à 50 % pH 7,3

L'aliquotage n'est pas nécessaire pour le stockage à -20C

*** Les 20ul contiennent 0,1% de BSA.

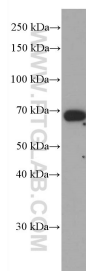
For technical support and original validation data for this product please contact:

T: 1 (888) 4PTGLAB (1-888-478-4522) (toll free in USA), or 1(312) 455-8498 (outside USA)

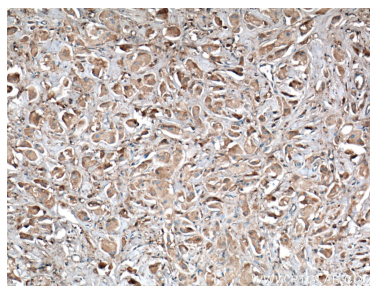
E: proteintech@ptglab.com
W: ptglab.com

This product is exclusively available under Proteintech Group brand and is not available to purchase from any other manufacturer.

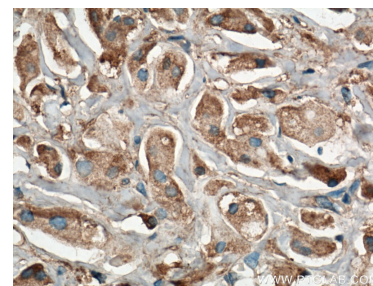
Données de validation sélectionnées



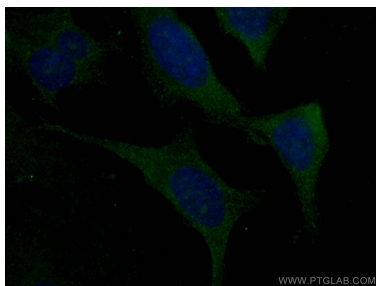
human heart tissue were subjected to SDS PAGE followed by western blot with 66123-1-Ig (Kininogen 1 antibody) at dilution of 1:10000 incubated at room temperature for 1.5 hours.



Immunohistochemical analysis of paraffin-embedded human breast cancer tissue slide using 66123-1-Ig (Kininogen 1 antibody) at dilution of 1:200 (under 10x lens. Heat mediated antigen retrieval with Tris-EDTA buffer (pH 9.0).



Immunohistochemical analysis of paraffin-embedded human breast cancer tissue slide using 66123-1-Ig (Kininogen 1 antibody) at dilution of 1:200 (under 40x lens. Heat mediated antigen retrieval with Tris-EDTA buffer (pH 9.0).



Immunofluorescent analysis of (-20°C Ethanol) fixed HeLa cells using Kininogen 1 antibody (66123-1-Ig, Clone: 10E8D11) at dilution of 1:400 and CoraLite®488-Conjugated AffiniPure Goat Anti-Mouse IgG(H+L).