

À des fins de recherche uniquement

Anticorps Monoclonal anti-ACTC1-specific



Numéro de catalogue: 66125-1-Ig **8 Publications**

Informations de base

Numéro de catalogue: 66125-1-Ig	Numéro d'acquisition GenBank: NM_005159	Méthode de purification: Purification par protéine A
Taille: 150ul , Concentration: 747 µg/ml by Bradford method using BSA as the standard;	Identification du gène (NCBI): 70	CloneNo.: 1F2B9
Hôte: Mouse	Nom complet: actin, alpha, cardiac muscle 1	Dilutions recommandées: WB 1:2500-1:10000 IHC 1:100-1:400 IF 1:50-1:500
Isotype: IgG1	MW calculé: 42 kDa	
	MW observés: 42 kDa	

Applications

Applications testées:
FC, IF, IHC, WB, ELISA

Demandes citées:
IF, IHC, WB

Spécificité de l'espèce:
Humain, porc, rat, souris

Espèces citées:
Humain, Lapin, rat, souris

Remarque-IHC: il est suggéré de démasquer l'antigène avec un tampon de TE buffer pH 9,0; (*) À défaut, 'le démasquage de l'antigène peut être effectué avec un tampon citrate pH 6,0.

Contrôles positifs:

WB : tissu cardiaque humain, tissu cardiaque de porc, tissu cardiaque de rat, tissu cardiaque de souris

IHC : tissu cardiaque humain, cœur humain et tissu de muscle squelettique humain

IF : tissu cardiaque de souris,

Informations générales

Actins are highly conserved proteins that are involved in various types of cell motility and are ubiquitously expressed in all eukaryotic cells. The ACTC1 gene encodes cardiac muscle alpha-actin, the predominant actin isoform in adult heart, which interacts with a variety of proteins to produce the force for muscle contraction. This antibody is specific to the ACTC1. It does not cross-react with other actin isoforms.

Publications notables

Autrice	Pubmed ID	Journal	Application
Jiang Yan	36087696	Eur J Pharmacol	WB,IF
Muyao Ye	34642907	Immunol Res	WB
Eric E Abrahamson	36411500	Amyloid	IF

Stockage

Stockage:
Stocker à -20°C. Stable pendant un an après l'expédition.

Tampon de stockage:
PBS avec azoture de sodium à 0,02 % et glycérol à 50 % pH 7,3
L'aliquotage n'est pas nécessaire pour le stockage à -20C

*** Les 20ul contiennent 0,1% de BSA.

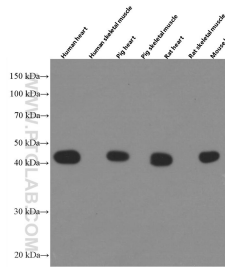
For technical support and original validation data for this product please contact:

T: 1 (888) 4PTGLAB (1-888-478-4522) (toll free in USA), or 1(312) 455-8498 (outside USA)

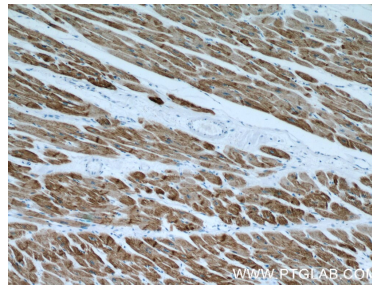
E: proteintech@ptglab.com
W: ptglab.com

This product is exclusively available under Proteintech Group brand and is not available to purchase from any other manufacturer.

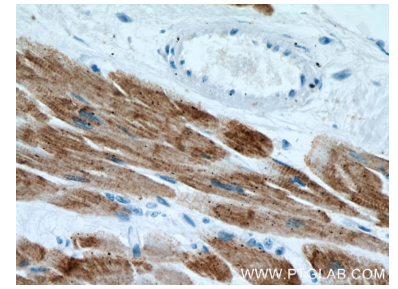
Données de validation sélectionnées



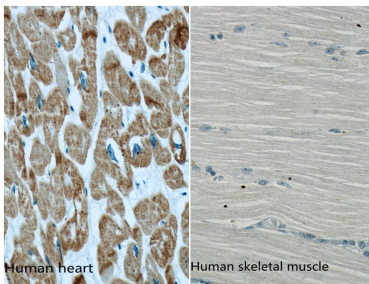
Various lysates were subjected to SDS PAGE followed by western blot with 66125-1-Ig (ACTC1-specific antibody) at dilution of 1:100000 incubated at room temperature for 1.5 hours.



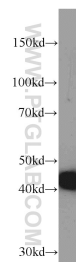
Immunohistochemical analysis of paraffin-embedded human heart using 66125-1-Ig (ACTC1-specific antibody) at dilution of 1:200 (under 10x lens).



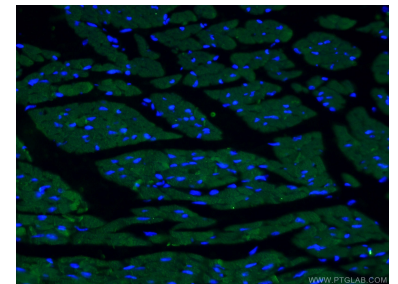
Immunohistochemical analysis of paraffin-embedded human heart using 66125-1-Ig (ACTC1-specific antibody) at dilution of 1:200 (under 40x lens).



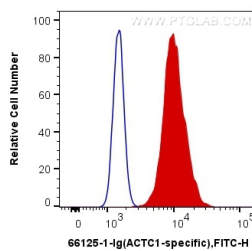
Immunohistochemical analysis of paraffin-embedded human heart and human skeletal muscle using 66125-1-Ig (ACTC1 specific antibody) at dilution 1:500. (under 40x lens).



human heart tissue were subjected to SDS PAGE followed by western blot with 66125-1-Ig (ACTC1-specific antibody) at dilution of 1:5000 incubated at room temperature for 1.5 hours.



Immunofluorescent analysis of (4% PFA) fixed mouse heart tissue using 66125-1-Ig (ACTC1-specific antibody) at dilution of 1:50 and Alexa Fluor 488-conjugated AffiniPure Goat Anti-Mouse IgG(H+L).



1×10^6 C2C12 cells were intracellularly stained with 0.4 ug Anti-Human ACTC1-specific (66125-1-Ig, Clone:1F2B9) and CoraLite®488-Conjugated AffiniPure Goat Anti-Mouse IgG(H+L) at dilution 1:1000 (red), or 0.4 ug Control Antibody. Cells were fixed with 4% PFA and permeabilized with Flow Cytometry Perm Buffer (PF00011-C).