

À des fins de recherche uniquement

Anticorps Monoclonal anti-Alpha-2-Macroglobulin



Numéro de catalogue: 66126-1-Ig

Informations de base

Numéro de catalogue:

66126-1-Ig

Numéro d'acquisition GenBank:

BC040071

Méthode de purification:

Purification par protéine A

Taille:

150ul, Concentration: 3900 µg/ml by 2 Nanodrop and 1800 µg/ml by Bradford method using BSA as the standard;

Identification du gène (NCBI):

alpha-2-macroglobulin

CloneNo.:

4B11F7

Hôte:

Mouse

MW calculé

1474 aa, 163 kDa

Dilutions recommandées:

WB 1:500-1:2000
IP 0.5-4.0 ug for IP and 1:500-1:1000 for WB

Isotype:

IgG2a

MW observés:

185 kDa

IHC 1:20-1:200

IF 1:200-1:800

Immunogen Catalog Number:

AG19245

Applications

Applications testées:

IF, IHC, IP, WB, ELISA

Spécificité de l'espèce:

Humain

Remarque-IHC: il est suggéré de démasquer l'antigène avec un tampon de TE buffer pH 9.0; (*) À défaut, le démasquage de l'antigène peut être effectué avec un tampon citrate pH 6.0.

Contrôles positifs:

WB : cellules HepG2, tissu cérébral humain

IP : tissu plasmatique humain,

IHC : tissu hépatique humain,

IF : cellules HepG2,

Informations générales

alpha-2-macroglobulin, also known as α 2-macroglobulin (α 2M and A2M), is a protein abundant in the plasma of vertebrates and several invertebrates. A2M is an evolutionarily conserved arm of the innate immune system. It also mediates the proliferation of T cells and macrophages. A2M acts as a nonspecific protease inhibitor involved in the host defense mechanism that inactivates both endogenous and exogenous proteases, including trypsin, thrombin and collagenase. Even though A2M is produced predominantly by the liver, it may also be expressed in the reproductive tract, heart, and brain, and may have important roles in many physiological processes and medical illnesses including Alzheimer's disease.

Stockage

Stockage:

Stocker à -20°C. Stable pendant un an après l'expédition.

Tampon de stockage:

PBS avec azoture de sodium à 0,02 % et glycérol à 50 % pH 7,3

L'aliquotage n'est pas nécessaire pour le stockage à -20C

*** Les 20ul contiennent 0,1% de BSA.

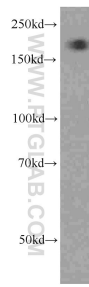
For technical support and original validation data for this product please contact:

T: 1 (888) 4PTGLAB (1-888-478-4522) (toll free in USA), or 1(312) 455-8498 (outside USA)

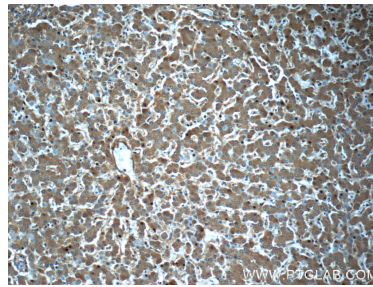
E: proteintech@ptglab.com
W: ptglab.com

This product is exclusively available under Proteintech Group brand and is not available to purchase from any other manufacturer.

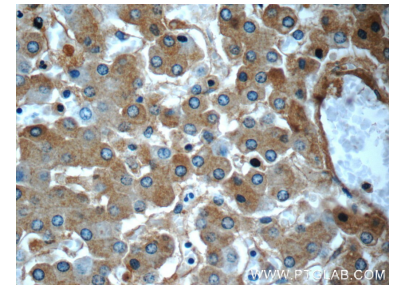
Données de validation sélectionnées



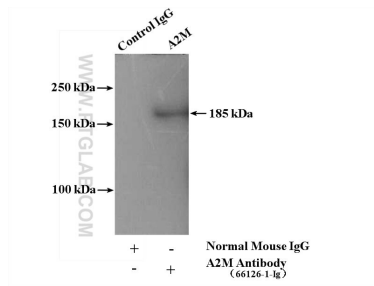
HepG2 cells were subjected to SDS PAGE followed by western blot with 66126-1-Ig (Alpha-2-macroglobulin antibody) at dilution of 1:1000 incubated at room temperature for 1.5 hours.



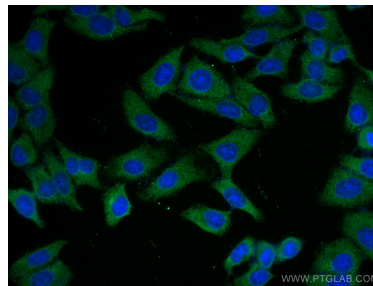
Immunohistochemical analysis of paraffin-embedded human liver slide using 66126-1-Ig (Alpha-2-macroglobulin antibody at dilution of 1:50.



Immunohistochemical analysis of paraffin-embedded human liver slide using 66126-1-Ig (Alpha-2-macroglobulin antibody at dilution of 1:50.



IP Result of anti-Alpha-2-macroglobulin (IP:66126-1-Ig, 5ug; Detection:66126-1-Ig 1:500) with human plasma lysate 4000ug.



Immunofluorescent analysis of (-20°C Methanol) fixed HepG2 cells using Alpha-2-Macroglobulin antibody (66126-1-Ig, Clone: 4B11F7) at dilution of 1:400 and CoraLite®488-Conjugated AffiniPure Goat Anti-Mouse IgG(H+L).