

À des fins de recherche uniquement

# Anticorps Monoclonal anti-RPL3

Numéro de catalogue: 66130-1-Ig **4 Publications**



## Informations de base

Numéro de catalogue: 66130-1-Ig	Numéro d'acquisition GenBank: BC012786	Méthode de purification: Purification par protéine G
Taille: 150ul , Concentration: 1300 µg/ml by Nanodrop and 1000 µg/ml by Bradford method using BSA as the standard;	Identification du gène (NCBI): 6122	CloneNo.: 2G1B8
Hôte: Mouse	Nom complet: ribosomal protein L3	Dilutions recommandées: WB 1:1000-1:8000 IHC 1:50-1:500 IF 1:50-1:500
Isotype: IgG1	MW calculé 46/27 kDa	
Immunogen Catalog Number: AG20400	MW observés: 46 kDa	

## Applications

### Applications testées:

IF, IHC, WB, ELISA

### Demandes citées:

IF, WB

### Spécificité de l'espèce:

Humain, rat, souris

### Espèces citées:

Humain, souris

**Remarque-IHC: il est suggéré de démasquer l'antigène avec un tampon de TE buffer pH 9,0; (\*) À défaut, 'le démasquage de l'antigène peut être 'effectué avec un tampon citrate pH 6,0.**

### Contrôles positifs:

WB : cellules RAW 264.7, cellules HEK-293

IHC : tissu de cancer du foie humain, tissu de cancer de la prostate humaine, tissu de cancer du poumon humain, tissu de cancer du sein humain, tissu placentaire humain

IF : cellules HepG2,

## Informations générales

Ribosomes, the complexes that catalyze protein synthesis, consist of a small 40S subunit and a large 60S subunit. Together these subunits are composed of 4 RNA species and approximately 80 structurally distinct proteins. RPL3, also named as TARBP-B and MGC104284, belongs to the ribosomal protein L3P family. This protein is a component of the 60S subunit. It can bind to the HIV-1 TAR mRNA, and it has been suggested that the protein contributes to tat-mediated transactivation. As is typical for genes encoding ribosomal proteins, there are multiple processed pseudogenes of this gene dispersed through the genome.

## Publications notables

Autrice	Pubmed ID	Journal	Application
Hauke S Hillen	34135319	Nat Commun	WB
Eriko Matsuura-Suzuki	35674491	Elife	WB
Pengli Zheng	34912111	Nature	IF

## Stockage

### Stockage:

Stocker à -20°C. Stable pendant un an après l'expédition.

### Tampon de stockage:

PBS avec azoture de sodium à 0,02 % et glycérol à 50 % pH 7,3

L'aliquotage n'est pas nécessaire pour le stockage à -20C

\*\*\* Les 20ul contiennent 0,1% de BSA.

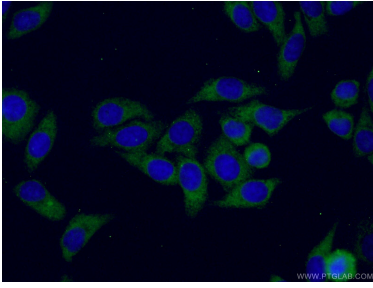
For technical support and original validation data for this product please contact:

T: 1 (888) 4PTGLAB (1-888-478-4522) (toll free in USA), or 1(312) 455-8498 (outside USA)

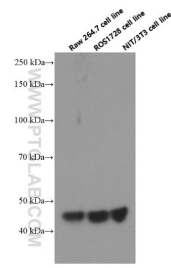
E: proteintech@ptglab.com  
W: ptglab.com

This product is exclusively available under Proteintech Group brand and is not available to purchase from any other manufacturer.

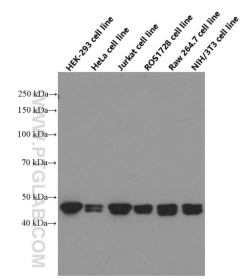
## Données de validation sélectionnées



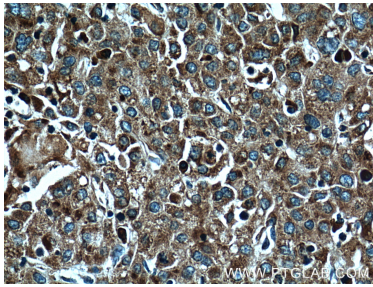
Immunofluorescent analysis of (-20°C Ethanol) fixed HepG2 cells using 66130-1-Ig (RPL3 antibody) at dilution of 1:50 and CoraLite488-Conjugated AffiniPure Goat Anti-Mouse IgG(H+L).



Western blot analysis of RPL3 in various cell lines using Proteintech antibody 66130-1-Ig at dilution of 1:4000 incubated at room temperature for 1.5 hours.



Western blot analysis of RPL3 in various cell lines and tissues using Proteintech antibody 66130-1-Ig at dilution of 1:5000 incubated at room temperature for 1.5 hours.



Immunohistochemical analysis of paraffin-embedded human liver cancer tissue slide using 66130-1-Ig (RPL3 Antibody) at dilution of 1:600 (under 40x lens). Heat mediated antigen retrieval with Tris-EDTA buffer (pH 9.0).