

À des fins de recherche uniquement

# Anticorps Monoclonal anti-IFITM2-specific



Numéro de catalogue: 66137-1-Ig

Phare

21 Publications

## Informations de base

<b>Numéro de catalogue:</b> 66137-1-Ig	<b>Numéro d'acquisition GenBank:</b> NML_006435	<b>Méthode de purification:</b> Purification par protéine G
<b>Taille:</b> 150ul , Concentration: 1700 µg/ml by Nanodrop and 880 µg/ml by Bradford method using BSA as the standard;	<b>Identification du gène (NCBI):</b> 10581	<b>CloneNo.:</b> 3D5F7
<b>Hôte:</b> Mouse	<b>Nom complet:</b> interferon induced transmembrane protein 2 (1-8D)	<b>Dilutions recommandées:</b> WB 1:500-1:2000
<b>Isotype:</b> IgG1	<b>MW observés:</b> 15 kDa	

## Applications

<b>Applications testées:</b> FC, WB, ELISA	<b>Contrôles positifs:</b> WB : cellules HepG2, Protéine recombinante
<b>Demandes citées:</b> IF, IHC, WB	
<b>Spécificité de l'espèce:</b> Humain	
<b>Espèces citées:</b> Humain	

## Informations générales

IFITM2, also named as 1-8D, belongs to the CD225 family. It is an IFN-induced antiviral protein that mediates cellular innate immunity to at least three major human pathogens, namely influenza A H1N1 virus, West Nile virus (WNV), and dengue virus (DENV), by inhibiting the early step(s) of replication. IFITM2 induces cell cycle arrest and mediates apoptosis by caspase activation and in p53-independent manner. It is overexpressed in colon carcinoma. IFITM2 is a novel pro-apoptotic gene that will provide new insights into the regulated cellular pathways to death. (PMID:19544527) This antibody is specific to IFITM2.

## Publications notables

Autrice	Pubmed ID	Journal	Application
Wing-Yiu Jason Lee	30266929	Sci Rep	WB
Xin Wang	33108395	PLoS Pathog	WB
Guoli Shi	30301809	Proc Natl Acad Sci U S A	WB

## Stockage

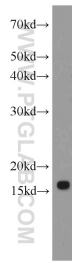
**Stockage:**  
Stocker à -20°C. Stable pendant un an après l'expédition.  
**Tampon de stockage:**  
PBS avec azoture de sodium à 0,02 % et glycérol à 50 % pH 7,3  
L'aliquotage n'est pas nécessaire pour le stockage à -20C

\*\*\* Les 20ul contiennent 0,1% de BSA.

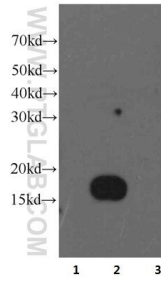
For technical support and original validation data for this product please contact:  
T: 1 (888) 4PTGLAB (1-888-478-4522) (toll free in USA), or 1(312) 455-8498 (outside USA)  
E: proteintech@ptglab.com  
W: ptglab.com

This product is exclusively available under Proteintech Group brand and is not available to purchase from any other manufacturer.

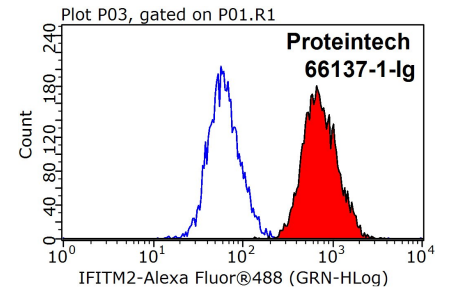
## Données de validation sélectionnées



HepG2 cells were subjected to SDS PAGE followed by western blot with 66137-1-Ig (IFITM2-specific antibody) at dilution of 1:1000 incubated at room temperature for 1.5 hours.



IFITM1 (Lane 1), IFITM2 (Lane 2) and IFITM3 (Lane 3) fusion proteins (20ng/lane) were subjected to SDS-PAGE followed by western blot with IFITM2 monoclonal antibody (66137-1-Ig) at dilution of 1:10,000.



$1 \times 10^6$  HeLa cells were stained with 0.2ug IFITM2-specific antibody (66137-1-Ig, red) and control antibody (blue). Fixed with 90% MeOH blocked with 3% BSA (30 min). Alexa Fluor 488-conjugated AffiniPure Goat Anti-Mouse IgG(H+L) with dilution 1:1000.