

À des fins de recherche uniquement

Anticorps Monoclonal anti-NSE

Numéro de catalogue: 66150-1-Ig

Phare

13 Publications



Informations de base

Numéro de catalogue: 66150-1-Ig	Numéro d'acquisition GenBank: BC002745	Méthode de purification: Purification par protéine A
Taille: 150ul, Concentration: 2093 µg/ml by Nanodrop and 1000 µg/ml by Bradford method using BSA as the standard;	Identification du gène (NCBI): 2026	CloneNo.: 6F8G3
Hôte: Mouse	Nom complet: enolase 2 (gamma, neuronal)	Dilutions recommandées: WB 1:5000-1:50000 IHC 1:2500-1:10000 IF 1:50-1:400
Isotype: IgG1	MW calculé 47 kDa	
Immunogen Catalog Number: AG19106	MW observés: 47 kDa	

Applications

Applications testées:

FC, IF, IHC, WB, ELISA

Demandes citées:

IF, IHC, WB

Spécificité de l'espèce:

Humain, porc, rat, souris

Espèces citées:

Humain, rat, souris

Remarque-IHC: il est suggéré de démasquer l'antigène avec un tampon de TE buffer pH 9,0; (*) À défaut, 'le démasquage de l'antigène peut être effectué avec un tampon citrate pH 6,0.

Contrôles positifs:

WB : cellules PC-12, cellules C6, cellules HEK-293, cellules Neuro-2a, cellules SH-SY5Y, cellules U-251, tissu cérébral de porc, tissu cérébral de rat, tissu cérébral de souris, tissu cérébral humain fœtal, tissu de cervelet de porc, tissu de cervelet de rat, tissu de cervelet de souris

IHC : tissu cérébral de souris, tissu cérébral de rat, tissu cérébral humain, tissu de cervelet de rat

IF : cellules SH-SY5Y, tissu cérébral de souris

Informations générales

NSE, also named as ENO2, belongs to the enolase family. Enolases are cytoplasmic glycolytic enzymes that may be involved in differentiation. The enolase has three isoenzymes, alpha, beta and gamma. The alpha form is expressed in most tissues, whereas the beta form is expressed in muscle tissue. The gamma enolase (ENO2), a homodimer, is primarily localized in neurons and neuroendocrine cells and is a cancer diagnostic marker for brain tumors (PMID:7520111). ENO2 plays a role in the glycolysis-related energy pathway and might be involved in higher metabolic activity during the day than at night, at least in part.

Publications notables

Autrice	Pubmed ID	Journal	Application
Rongkun Li	34836938	Cell Death Dis	WB
Jiaren Pan	36419844	Dis Markers	WB,IHC
Huan Liu	36377337	Brain Behav	IF

Stockage

Stockage:

Stocker à -20°C. Stable pendant un an après l'expédition.

Tampon de stockage:

PBS avec azoture de sodium à 0,02 % et glycérol à 50 % pH 7,3

L'aliquotage n'est pas nécessaire pour le stockage à -20C

*** Les 20ul contiennent 0,1% de BSA.

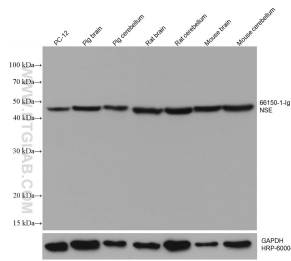
For technical support and original validation data for this product please contact:

T: 1 (888) 4PTGLAB (1-888-478-4522) (toll free in USA), or 1(312) 455-8498 (outside USA)

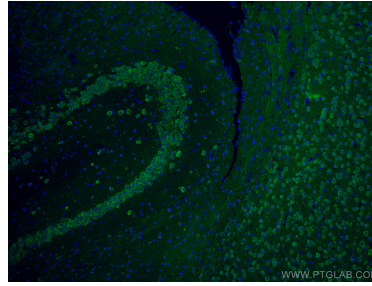
E: proteintech@ptglab.com
W: ptglab.com

This product is exclusively available under Proteintech Group brand and is not available to purchase from any other manufacturer.

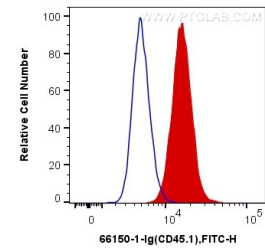
Données de validation sélectionnées



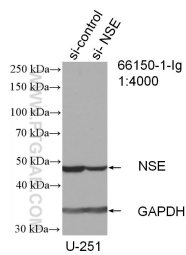
Various lysates were subjected to SDS PAGE followed by western blot with 66150-1-Ig (NSE antibody) at dilution of 1:50000 incubated at room temperature for 1.5 hours. The membrane was stripped and reblotted with HRP-conjugated GAPDH Monoclonal antibody (HRP-60004) as loading control.



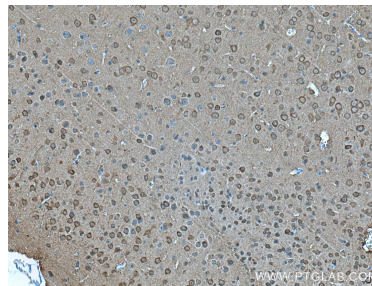
Immunofluorescent analysis of (4% PFA) fixed mouse brain tissue using NSE antibody (66150-1-Ig, Clone: 6F8G3) at dilution of 1:400 and CoraLite®488-Conjugated AffiniPure Goat Anti-Mouse IgG(H+L).



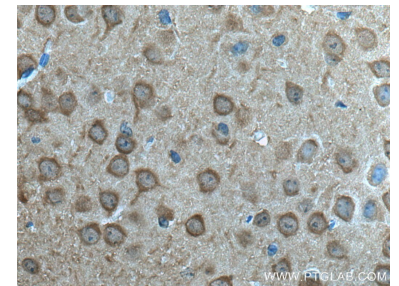
1X10⁶ SH-SY5Y cells were intracellularly stained with 0.2 ug Anti-Human NSE (66150-1-Ig, Clone:6F8G3) and CoraLite®488-Conjugated AffiniPure Goat Anti-Mouse IgG(H+L) at dilution 1:1000 (red), or 0.2 ug Control Antibody. Cells were fixed with 4% PFA and permeabilized with Flow Cytometry Perm Buffer (PF00011-C).



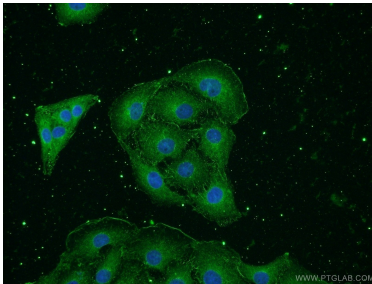
WB result of NSE antibody (66150-1-Ig; 1:4000; incubated at room temperature for 1.5 hours) with sh-Control and sh-NSE transfected U-251 cells.



Immunohistochemical analysis of paraffin-embedded mouse brain tissue slide using 66150-1-Ig (NSE antibody) at dilution of 1:5000 (under 10x lens). Heat mediated antigen retrieval with Tris-EDTA buffer (pH 9.0).



Immunohistochemical analysis of paraffin-embedded mouse brain tissue slide using 66150-1-Ig (NSE antibody) at dilution of 1:5000 (under 40x lens). Heat mediated antigen retrieval with Tris-EDTA buffer (pH 9.0).



Immunofluorescent analysis of SH-SY5Y cells using 66150-1-Ig (NSE antibody) at dilution of 1:50 and Alexa Fluor 488-conjugated AffiniPure Goat Anti-Mouse IgG (H+L).