

À des fins de recherche uniquement

Anticorps Monoclonal anti-HBE1-Specific



Numéro de catalogue: 66151-1-Ig

Informations de base

Numéro de catalogue: 66151-1-Ig	Numéro d'acquisition GenBank: NM_005330	Méthode de purification: Purification par protéine G
Taille: 150ul, Concentration: 1811 µg/ml by Nanodrop and 1040 µg/ml by Bradford method using BSA as the standard;	Identification du gène (NCBI): 3046	CloneNo.: 2C11G6
Hôte: Mouse	Nom complet: hemoglobin, epsilon 1	Dilutions recommandées: WB 1:500-1:1000 IHC 1:500-1:2000
Isotype: IgG1	MW observés: 16 kDa	

Applications

Applications testées:
FC, IHC, WB, ELISA

Spécificité de l'espèce:
Humain

Remarque-IHC: il est suggéré de démasquer l'antigène avec un tampon de TE buffer pH 9,0; (*) À défaut, le démasquage de l'antigène peut être effectué avec un tampon citrate pH 6,0.

Contrôles positifs:

WB : cellules K-562,
IHC : tissu placentaire humain,

Informations générales

The hemoglobin molecule is a tetramer consisting of two α -globin-like polypeptide chains and two β -globin-like chains. The human hemoglobin genes are expressed in a tightly developmentally controlled fashion. ϵ -globin (HBE1) is the predominantly expressed gene during the embryonic stage. The epsilon hemoglobin chain seems to be the best marker for fetal nucleated red blood cells (NRBCs). Anti-HBE1 may be used to label and isolate fetal cells from maternal blood and can be useful in prenatal diagnosis. This antibody specifically recognizes the HBE1 and doesn't cross-react with other globin chains.

Stockage

Stockage:
Stocker à -20°C. Stable pendant un an après l'expédition.
Tampon de stockage:
PBS avec azoture de sodium à 0,02 % et glycérol à 50 % pH 7,3
L'aliquotage n'est pas nécessaire pour le stockage à -20C

*** Les 20ul contiennent 0,1% de BSA.

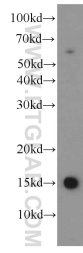
For technical support and original validation data for this product please contact:

T: 1 (888) 4PTGLAB (1-888-478-4522) (toll free
in USA), or 1(312) 455-8498 (outside USA)

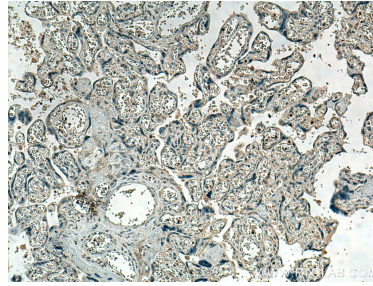
E: proteintech@ptglab.com
W: ptglab.com

This product is exclusively available under Proteintech Group brand and is not available to purchase from any other manufacturer.

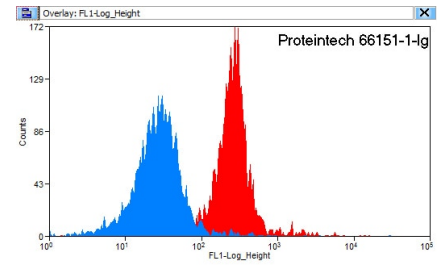
Données de validation sélectionnées



K-562 cells were subjected to SDS PAGE followed by western blot with 66151-1-Ig (HBE1-Specific antibody) at dilution of 1:500 incubated at room temperature for 1.5 hours.



Immunohistochemical analysis of paraffin-embedded human placenta tissue slide using 66151-1-Ig (HBE1-Specific antibody) at dilution of 1:1000 (under 10x Lens). Heat mediated antigen retrieval with Tris-EDTA buffer (pH 9.0).



1×10^6 K-562 cells were stained with 0.2 ug Anti-Human HBE1-Specific (66151-1-Ig, Clone: 2C11G6) and CoraLite488-Conjugated AffiniPure Goat Anti-Mouse IgG(H+L) at dilution 1:1500 (red), or stained with 0.2 ug isotype control and CoraLite488-Conjugated AffiniPure Goat Anti-Mouse IgG(H+L) at dilution 1:1500 (blue). Cells were fixed with 90% MeOH.