

À des fins de recherche uniquement

# Anticorps Monoclonal anti-CD146/MCAM



Numéro de catalogue: 66153-1-Ig **2 Publications**

## Informations de base

<b>Numéro de catalogue:</b> 66153-1-Ig	<b>Numéro d'acquisition GenBank:</b> BC056418	<b>Méthode de purification:</b> Purification par protéine G
<b>Taille:</b> 150ul , Concentration: 1053 µg/ml by Bradford method using BSA as the standard;	<b>Identification du gène (NCBI):</b> 4162	<b>CloneNo.:</b> 4D8A9
<b>Hôte:</b> Mouse	<b>Nom complet:</b> melanoma cell adhesion molecule	<b>Dilutions recommandées:</b> WB 1:2000-1:20000 IHC 1:1000-1:4000 IF 1:1000-1:4000
<b>Isotype:</b> IgG1	<b>MW calculé:</b> 646 aa, 72 kDa	
<b>Immunogen Catalog Number:</b> AG11855	<b>MW observés:</b> 120 kDa	

## Applications

**Applications testées:**  
FC, IF, IHC, WB, ELISA

**Demandes citées:**  
FC, WB

**Spécificité de l'espèce:**  
Humain

**Espèces citées:**  
Humain

**Remarque-IHC: il est suggéré de démasquer l'antigène avec un tampon de TE buffer pH 9,0; (\*) A défaut, 'le démasquage de l'antigène peut être effectué avec un tampon citrate pH 6,0.**

**Contrôles positifs:**

**WB :** cellules HepG2, cellules A375, cellules HeLa, cellules HUVEC, cellules L02, tissu placentaire humain

**IHC :** tissu de cancer du foie humain, tissu placentaire humain

**IF :** tissu de cancer du foie humain, cellules HUVEC

## Informations générales

CD146, also known as melanoma cell adhesion molecule (MCAM) or MUC18, originally identified as a biomarker of melanoma progression, is a transmembrane glycoprotein of 113-130 kDa, belonging to the immunoglobulin (Ig) superfamily (PMID: 8378324; 25993332). Structurally, it consists of five Ig domains, a transmembrane domain, and a cytoplasmic region. In normal adult tissue, CD146 is primarily expressed by vascular endothelium and smooth muscle. CD146 is a key cell adhesion protein in vascular endothelial cell activity and angiogenesis, and has been used as marker of circulating endothelium cells (CECs) (PMID: 19356677). In addition to the membrane-anchored form of CD146, a soluble form of CD146 (sCD146, 105 kDa) has also been found in human plasma and in the supernatant of cultured human endothelial cells (PMID: 9462829; 19229070; 16374253; 14597988). This antibody detects a band at approximately 120 kDa that corresponds to the molecular weight of glycosylated CD146. Treatment of lysates of HepG2 cells and L02 cells with PNGase F, which removes oligosaccharides from N-linked glycoproteins, led to a down-shift of the detected band.

## Publications notables

Autrice	Pubmed ID	Journal	Application
Xun Xi	33865812	Exp Cell Res	FC
Yue Cheng	37315748	Cell Signal	WB

## Stockage

**Stockage:**

Stocker à -20°C. Stable pendant un an après l'expédition.

**Tampon de stockage:**

PBS avec azoture de sodium à 0,02 % et glycérol à 50 % pH 7,3

L'aliquotage n'est pas nécessaire pour le stockage à -20C

**\*\*\* Les 20ul contiennent 0,1% de BSA.**

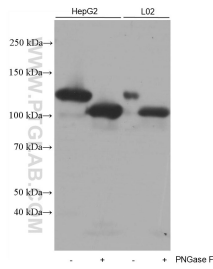
For technical support and original validation data for this product please contact:

T: 1 (888) 4PTGLAB (1-888-478-4522) (toll free in USA), or 1(312) 455-8498 (outside USA)

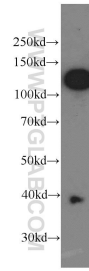
E: proteintech@ptglab.com  
W: ptglab.com

**This product is exclusively available under Proteintech Group brand and is not available to purchase from any other manufacturer.**

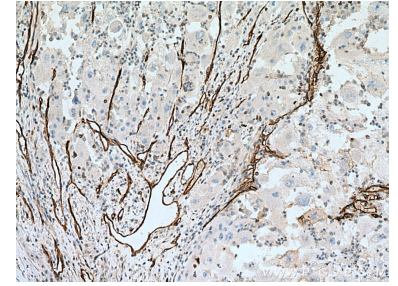
## Données de validation sélectionnées



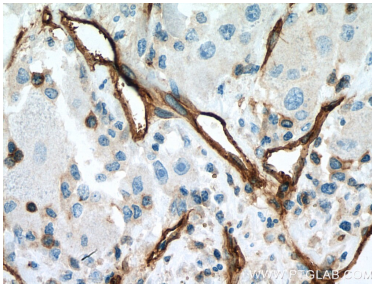
Untreated and PNGase F-treated lysates of HepG2 cells and L02 cells were subjected to SDS PAGE followed by western blot with 66153-1-Ig (CD146/MCAM antibody) at dilution of 1:20000 incubated at room temperature for 1.5 hours. PNGase F was obtained from Atagenix (cat.NO. ata808).



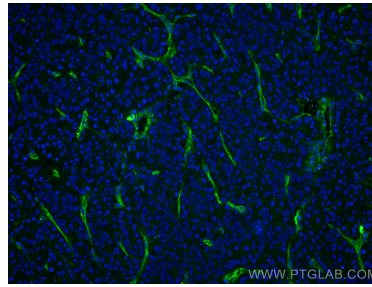
A375 cells were subjected to SDS PAGE followed by western blot with 66153-1-Ig (CD146/MCAM antibody) at dilution of 1:1000 incubated at room temperature for 1.5 hours.



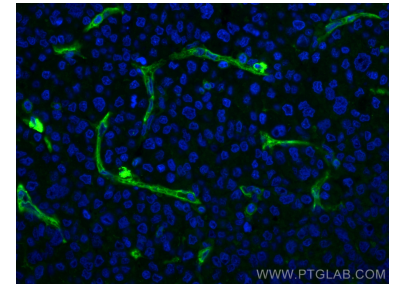
Immunohistochemical analysis of paraffin-embedded human liver cancer tissue slide using 66153-1-Ig (CD146/MCAM antibody) at dilution of 1:2000 (under 10x lens). Heat mediated antigen retrieval with Tris-EDTA buffer (pH 9.0).



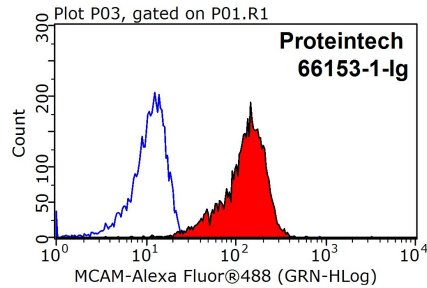
Immunohistochemical analysis of paraffin-embedded human liver cancer tissue slide using 66153-1-Ig (CD146/MCAM antibody) at dilution of 1:2000 (under 40x lens). Heat mediated antigen retrieval with Tris-EDTA buffer (pH 9.0).



Immunofluorescent analysis of (4% PFA) fixed human liver cancer tissue using CD146/MCAM antibody (66153-1-Ig, Clone: 4D8A9) at dilution of 1:2000 and CoraLite@488-Conjugated AffiniPure Goat Anti-Mouse IgG(H+L).



Immunofluorescent analysis of (4% PFA) fixed human liver cancer tissue using CD146/MCAM antibody (66153-1-Ig, Clone: 4D8A9) at dilution of 1:2000 and CoraLite@488-Conjugated AffiniPure Goat Anti-Mouse IgG(H+L).



1X10<sup>6</sup> HeLa cells were stained with 0.2ug CD146/MCAM antibody (66153-1-Ig, red) and control antibody (blue). Fixed with 90% MeOH blocked with 3% BSA (30 min). Alexa Fluor 488-conjugated AffiniPure Goat Anti-Mouse IgG(H+L) with dilution 1:100.