

À des fins de recherche uniquement

Anticorps Monoclonal anti- Complement factor B



Numéro de catalogue: 66154-1-Ig

Informations de base

Numéro de catalogue: 66154-1-Ig	Numéro d'acquisition GenBank: BC007990	Méthode de purification: Chromatographie d'affinité thiophilique
Taille: 150ul , Concentration: 600 µg/ml by Bradford method using BSA as the standard;	Identification du gène (NCBI): 629	CloneNo.: 8D2B6
Hôte: Mouse	Nom complet: complement factor B	Dilutions recommandées: WB 1:500-1:2000 IHC 1:20-1:200 IF 1:200-1:800
Isotype: IgM	MW calculé: 86 kDa	
Immunogen Catalog Number: AG19107	MW observés: 93 kDa	

Applications

Applications testées: IF, IHC, WB, ELISA	Contrôles positifs: WB : tissu sanguin humain, IHC : tissu hépatique humain, IF : tissu hépatique humain,
Spécificité de l'espèce: Humain	
Remarque-IHC: <i>il est suggéré de démasquer l'antigène avec un tampon de TE buffer pH 9,0; (*) À défaut, le démasquage de l'antigène peut être effectué avec un tampon citrate pH 6,0.</i>	

Informations générales

Complement factor B (CFB) is a component of the alternative pathway of complement activation. Complement factor B is cleaved into Ba and Bb by factor D in the presence of C3b. The active subunit Bb is a serine protease which associates with C3b to form the alternative pathway C3 convertase. Bb is involved in the proliferation of reactivated B lymphocytes, while Ba inhibits their proliferation.

Stockage

Stockage:
Stocker à -20°C. Stable pendant un an après l'expédition.
Tampon de stockage:
PBS avec azoture de sodium à 0,02 % et glycérol à 50 % pH 7,3
L'aliquotage n'est pas nécessaire pour le stockage à -20C

*** Les 20ul contiennent 0,1% de BSA.

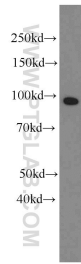
For technical support and original validation data for this product please contact:

T: 1 (888) 4PTGLAB (1-888-478-4522) (toll free
in USA), or 1(312) 455-8498 (outside USA)

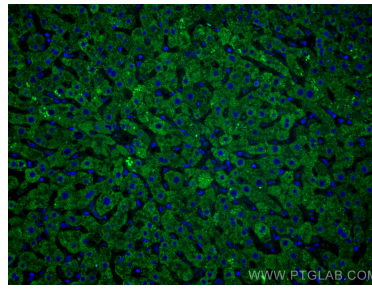
E: proteintech@ptglab.com
W: ptglab.com

This product is exclusively available under Proteintech Group brand and is not available to purchase from any other manufacturer.

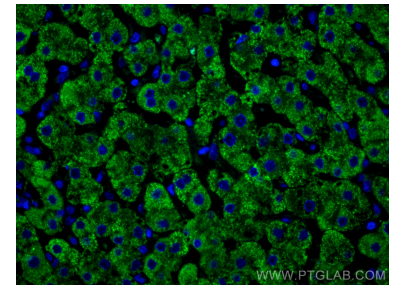
Données de validation sélectionnées



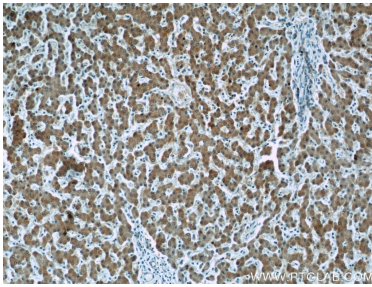
human blood were subjected to SDS PAGE followed by western blot with 66154-1-Ig (Complement factor B antibody) at dilution of 1:1000 incubated at room temperature for 1.5 hours.



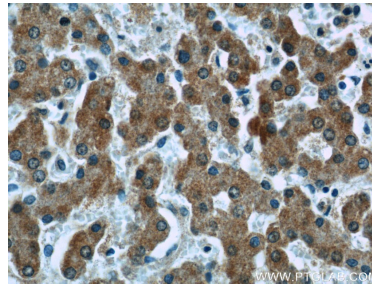
Immunofluorescent analysis of (4% PFA) fixed human liver tissue using Complement factor B antibody (66154-1-Ig, Clone: 8D2B6) at dilution of 1:400 and CoraLite®488-Conjugated AffiniPure Goat Anti-Mouse IgG(H+L).



Immunofluorescent analysis of (4% PFA) fixed human liver tissue using Complement factor B antibody (66154-1-Ig, Clone: 8D2B6) at dilution of 1:400 and CoraLite®488-Conjugated AffiniPure Goat Anti-Mouse IgG(H+L).



Immunohistochemical analysis of paraffin-embedded human liver tissue slide using 66154-1-Ig (Complement factor B antibody at dilution of 1:50 (under 10x lens).



Immunohistochemical analysis of paraffin-embedded human liver tissue slide using 66154-1-Ig (Complement factor B antibody at dilution of 1:50 (under 40x lens).