

À des fins de recherche uniquement

Anticorps Monoclonal anti-C3/C3b/C3c



Numéro de catalogue: 66157-1-Ig **2 Publications**

Informations de base

Numéro de catalogue: 66157-1-Ig	Numéro d'acquisition GenBank: BC150179	Méthode de purification: Purification par protéine G
Taille: 150ul, Concentration: 396 µg/ml by Nanodrop and 353 µg/ml by Bradford method using BSA as the standard;	Identification du gène (NCBI): 718	CloneNo.: 2A6B3
Hôte: Mouse	Nom complet: complement component 3	Dilutions recommandées: WB 1:1000-1:4000 IHC 1:20-1:200 IF 1:50-1:500
Isotype: IgG1	MW calculé: 1663 aa, 187 kDa	
Immunogen Catalog Number: AG15955	MW observés: 115 kDa	

Applications

Applications testées: IF, IHC, WB, ELISA	Contrôles positifs: WB : tissu plasmatique humain, tissu sanguin humain IHC : tissu hépatique humain, IF : cellules HepG2,
Demandes citées: IF, WB	
Spécificité de l'espèce: Humain	
Espèces citées: rat	

Remarque-IHC: il est suggéré de démasquer l'antigène avec un tampon de TE buffer pH 9,0; (*) A défaut, 'le démasquage de l'antigène peut être effectué avec un tampon citrate pH 6,0.

Informations générales

The complement system is an important effector which bridges the innate and adaptive immune systems (PMID: 20010915). The third component of complement, C3, plays a central role in the activation of the complement system. Its processing by C3 convertase is the central reaction in both classical and alternative complement pathways (PMID: 11414361). Human C3, composed of α and β chains (115 and 75 kDa, respectively), is cleaved into C3a and C3b by C3 convertase. C3b is further cleaved into iC3b, C3c, C3dg and C3f. This antibody raised against 1314-1663 aa of human C3 protein recognize C3 alpha chain, C3b alpha' chain, and C3c alpha' chain fragment 2.

Publications notables

Autrice	Pubmed ID	Journal	Application
Qing Liu	35725619	J Neuroinflammation	WB, IF
Yichun Zou	30579855	Neurochem Int	WB

Stockage

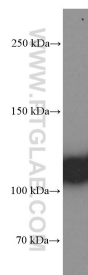
Stockage:
Stocker à -20°C. Stable pendant un an après l'expédition.
Tampon de stockage:
PBS avec azoture de sodium à 0,02 % et glycérol à 50 % pH 7,3
L'aliquotage n'est pas nécessaire pour le stockage à -20C

*** Les 20ul contiennent 0,1% de BSA.

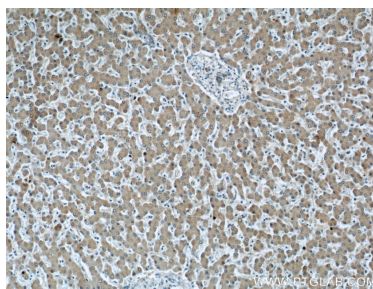
For technical support and original validation data for this product please contact:
T: 1 (888) 4PTGLAB (1-888-478-4522) (toll free in USA), or 1(312) 455-8498 (outside USA)
E: proteintech@ptglab.com
W: ptglab.com

This product is exclusively available under Proteintech Group brand and is not available to purchase from any other manufacturer.

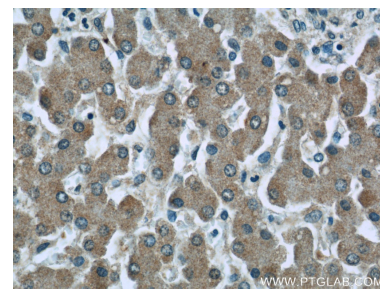
Données de validation sélectionnées



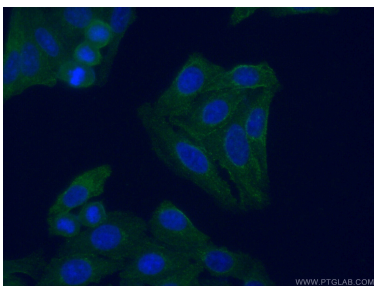
human plasma were subjected to SDS PAGE followed by western blot with 66157-1-Ig (C3/C3b/C3c antibody) at dilution of 1:2000 incubated at room temperature for 1.5 hours.



Immunohistochemical analysis of paraffin-embedded human liver tissue slide using 66157-1-Ig (C3/C3b/C3c antibody) at dilution of 1:50 (under 10x lens).



Immunohistochemical analysis of paraffin-embedded human liver tissue slide using 66157-1-Ig (C3/C3b/C3c antibody) at dilution of 1:50 (under 40x lens).



Immunofluorescent analysis of (-20°C Ethanol) fixed HepG2 cells using 66157-1-Ig (C3/C3b/C3c antibody) at dilution of 1:100 and Alexa Fluor 488-Conjugated AffiniPure Goat Anti-Mouse IgG(H+L).