

À des fins de recherche uniquement

Anticorps Monoclonal anti-Fibrinogen Gamma Chain



Numéro de catalogue: 66158-1-Ig **2 Publications**

Informations de base

Numéro de catalogue: 66158-1-Ig	Numéro d'acquisition GenBank: BC007044	Méthode de purification: Chromatographie d'affinité thiophilique
Taille: 150ul , Concentration: 1200 µg/ml by Bradford method using BSA as the standard;	Identification du gène (NCBI): 2266	CloneNo.: 2B2B8
Hôte: Mouse	Nom complet: fibrinogen gamma chain	Dilutions recommandées: WB 1:500-1:2000 IHC 1:20-1:200 IF 1:20-1:200
Isotype: IgM	MW calculé 453aa,52 kDa; 437aa,50 kDa	
Immunogen Catalog Number: AG8817	MW observés: 52 kDa	

Applications

Applications testées: IF, IHC, WB, ELISA	Contrôles positifs: WB : cellules L02, IHC : tissu hépatique humain, tissu rénal humain IF : cellules L02,
Demandes citées: IHC	
Spécificité de l'espèce: Humain	
Espèces citées: Humain	
Remarque-IHC: il est suggéré de démasquer l'antigène avec un tampon de TE buffer pH 9,0; (*) A défaut, 'le démasquage de l'antigène peut être 'effectué avec un tampon citrate pH 6,0.	

Informations générales

Fibrinogen is a soluble plasma glycoprotein synthesized in the liver. It is composed of two sets of three structurally different subunits: alpha (FGA), beta (FGB), gamma (FGG). Fibrinogen is converted by thrombin into fibrin during blood coagulation. Fibrinogen and fibrin play overlapping roles in blood clotting, fibrinolysis, cellular and matrix interactions, the inflammatory response, wound healing, and neoplasia (PMID: 16102057). FGG is the gamma chain of fibrinogen. Mutations in the gene of FGG lead to several disorders, including dysfibrinogenemia, hypofibrinogenemia and thrombophilia.

Publications notables

Autrice	Pubmed ID	Journal	Application
Fanfan Li	30959404	Mol Ther Nucleic Acids	
H H Peng	33995485	Front Genet	IHC

Stockage

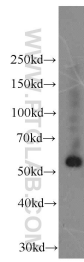
Stockage:
Stocker à -20°C. Stable pendant un an après l'expédition.
Tampon de stockage:
PBS avec azoture de sodium à 0,02 % et glycérol à 50 % pH 7,3
L'aliquotage n'est pas nécessaire pour le stockage à -20C

*** Les 20ul contiennent 0,1% de BSA.

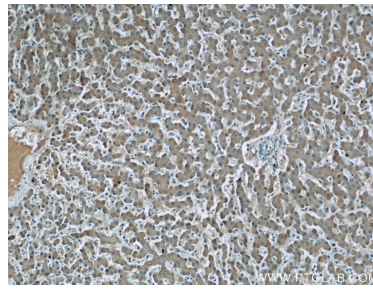
For technical support and original validation data for this product please contact:
T: 1 (888) 4PTGLAB (1-888-478-4522) (toll free in USA), or 1(312) 455-8498 (outside USA)
E: proteintech@ptglab.com
W: ptglab.com

This product is exclusively available under Proteintech Group brand and is not available to purchase from any other manufacturer.

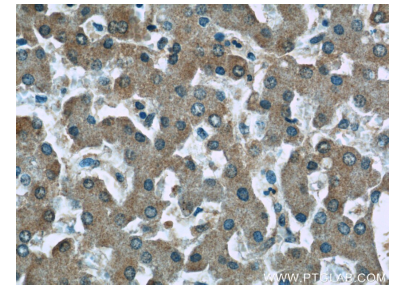
Données de validation sélectionnées



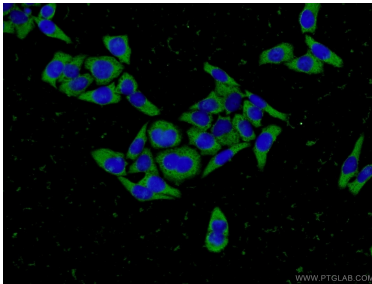
L02 cells were subjected to SDS PAGE followed by western blot with 66158-1-Ig (Fibrinogen gamma chain antibody at dilution of 1:1000 incubated at room temperature for 1.5 hours.



Immunohistochemical analysis of paraffin-embedded human liver tissue slide using 66158-1-Ig (Fibrinogen gamma chain antibody at dilution of 1:50 (under 10x lens).



Immunohistochemical analysis of paraffin-embedded human liver tissue slide using 66158-1-Ig (Fibrinogen gamma chain antibody at dilution of 1:50 (under 40x lens).



Immunofluorescent analysis of L02 cells using 66158-1-Ig (Fibrinogen gamma chain antibody) at dilution of 1:50 and Alexa Fluor 488-conjugated AffiniPure Goat Anti-Mouse IgG (H+L).