

À des fins de recherche uniquement

Anticorps Monoclonal anti-MSH6

Numéro de catalogue: 66172-1-Ig

Phare

5 Publications



Informations de base

Numéro de catalogue:

66172-1-Ig

Numéro d'acquisition GenBank:

BC004246

Méthode de purification:

Purification par protéine A

Taille:

150ul, Concentration: 2214 µg/ml by Nanodrop and 1027 µg/ml by Bradford method using BSA as the standard;

Identification du gène (NCBI):

2956

CloneNo.:

2E10B2

Hôte:

Mouse

Nom complet:

mutS homolog 6 (E. coli)

Dilutions recommandées:

WB 1:500-1:2000

IP 0.5-4.0 µg for IP and 1:500-1:1000 for WB

Isotype:

IgG2a

MW calculé

153 kDa

MW observés:

160 kDa

IHC 1:500-1:2000

IF 1:50-1:500

Immunogen Catalog Number:

AG12645

Applications

Applications testées:

FC, IF, IHC, IP, WB, ELISA

Demandes citées:

IHC, WB

Spécificité de l'espèce:

Humain, souris

Espèces citées:

Humain, souris

Remarque-IHC: il est suggéré de démasquer l'antigène avec un tampon de TE buffer pH 9,0; (*) A défaut, le démasquage de l'antigène peut être effectué avec un tampon citrate pH 6,0.

Contrôles positifs:

WB : cellules HEK-293, HEK-293

IP : cellules HEK-293,

IHC : tissu de cancer du côlon humain,

IF : cellules HepG2,

Informations générales

MSH6, also named as DNA mismatch repair protein Msh6 or GTMBP, is a 1360 amino acid protein, which contains one PWWP domain and belongs to the DNA mismatch repair MutS family. MSH6 localizes in the nucleus and is a component of the post-replicative DNA mismatch repair system. Msh2 and Msh6 form a protein complex required to repair mismatches generated during DNA replication.

Publications notables

Autrice	Pubmed ID	Journal	Application
Takashi Minamisaka	35614379	Neuropathology	IHC
Jun Zhu	32396667	J Surg Oncol	IHC
Dingkong Liang	29352574	Surgery	IHC

Stockage

Stockage:

Stocker à -20°C. Stable pendant un an après l'expédition.

Tampon de stockage:

PBS avec azoture de sodium à 0,02 % et glycérol à 50 % pH 7,3

L'aliquotage n'est pas nécessaire pour le stockage à -20C

*** Les 20ul contiennent 0,1% de BSA.

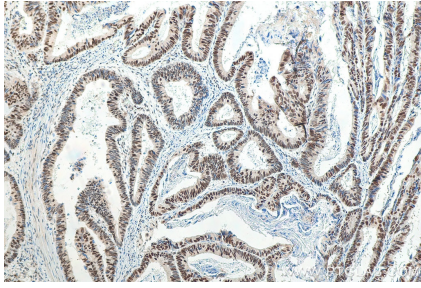
For technical support and original validation data for this product please contact:

T: 1 (888) 4PTGLAB (1-888-478-4522) (toll free in USA), or 1(312) 455-8498 (outside USA)

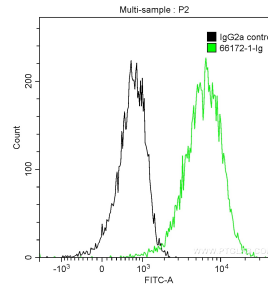
E: proteintech@ptglab.com
W: ptglab.com

This product is exclusively available under Proteintech Group brand and is not available to purchase from any other manufacturer.

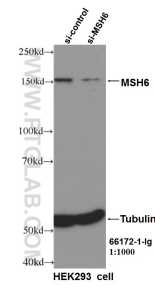
Données de validation sélectionnées



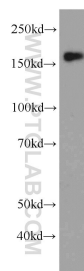
Immunohistochemical analysis of paraffin-embedded human colon cancer tissue slide using 66172-1-Ig (MSH6 antibody) at dilution of 1:1000 (under 10x lens). Heat mediated antigen retrieval with Tris-EDTA buffer (pH 9.0).



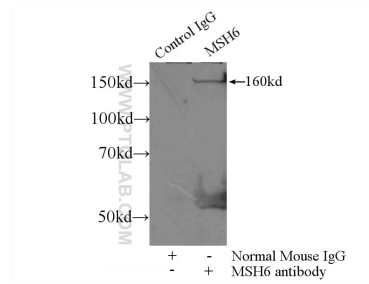
1X10⁶ HEK-293 cells were intracellularly stained with 0.2 ug Anti-Human MSH6 (66172-1-Ig, Clone:2E10B2) and CoraLite®488-Conjugated AffiniPure Goat Anti-Mouse IgG(H+L) at dilution 1:1000 (green), and 0.2 ug Mouse IgG2a Isotype Control (66360-2-Ig, Clone: K11A1B2A2) (black). Cells were fixed with 4% PFA and permeabilized with 0.1% TritonX-100.



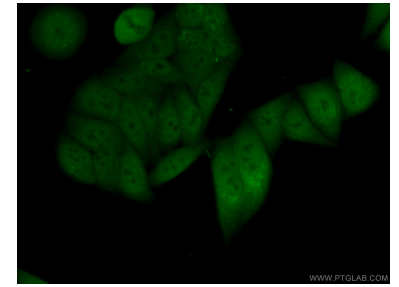
WB result of MSH6 antibody (66172-1-Ig, 1:1000) with si-Control and si-MSH6 transfected HEK293 cells.



HEK-293 cells were subjected to SDS PAGE followed by western blot with 66172-1-Ig (MSH6 Antibody) at dilution of 1:1000 incubated at room temperature for 1.5 hours.



IP Result of anti-MSH6 (IP:66172-1-Ig, 4ug; Detection:66172-1-Ig 1:600) with HEK-293 cells lysate 1800ug.



Immunofluorescent analysis of (10% Formaldehyde) fixed HepG2 cells using 66172-1-Ig (MSH6 antibody) at dilution of 1:50 and Alexa Fluor 488-conjugated AffiniPure Goat Anti-Mouse IgG(H+L).