

À des fins de recherche uniquement

# Anticorps Monoclonal anti-CNPY2, MSAP



Numéro de catalogue: 66173-1-Ig **Phare**

## Informations de base

Numéro de catalogue: 66173-1-Ig	Numéro d'acquisition GenBank: BC065015	Méthode de purification: Purification par protéine A
Taille: 150ul , Concentration: 1500 µg/ml by Nanodrop and 1133 µg/ml by Bradford method using BSA as the standard;	Identification du gène (NCBI): 10330	CloneNo.: 1G8G11
Hôte: Mouse	Nom complet: canopy 2 homolog (zebrafish)	Dilutions recommandées: WB 1:2000-1:10000 IHC 1:50-1:500 IF 1:50-1:500
Isotype: IgG2b	MW calculé 21 kDa	
Immunogen Catalog Number: AG6363	MW observés: 18-21 kDa	

## Applications

### Applications testées:

FC, IF, IHC, WB, ELISA

### Spécificité de l'espèce:

Humain, porc, rat, souris

**Remarque-IHC: il est suggéré de démasquer l'antigène avec un tampon de TE buffer pH 9.0; (\*) À défaut, 'le démasquage de l'antigène peut être effectué avec un tampon citrate pH 6,0.**

### Contrôles positifs:

WB : cellules A549, cellules HeLa, cellules HepG2, cellules Jurkat, cellules K-562, cellules LNCaP, cellules NIH/3T3, tissu hépatique de porc, tissu hépatique de rat, tissu placentaire humain

IHC : tissu de cancer du pancréas humain,

IF : cellules HepG2,

## Informations générales

CNPY2, also named as MSAP, TMEM4 and ZSIG9, is a positive regulator of neurite outgrowth. It interacts with the ezrin-radixin-moesin (ERM)-like myosin regulatory light chain-interacting protein (MIR), and the two proteins are co-localized in cell lines and in primary neurons. CNPY2 can stabilize MRLC and thus bring about an increase in neurite outgrowth. (PMID: 12826659) This antibody is specific to CNPY2

## Stockage

### Stockage:

Stocker à -20°C. Stable pendant un an après l'expédition.

### Tampon de stockage:

PBS avec azoture de sodium à 0,02 % et glycérol à 50 % pH 7,3

L'aliquotage n'est pas nécessaire pour le stockage à -20C

\*\*\* Les 20ul contiennent 0,1% de BSA.

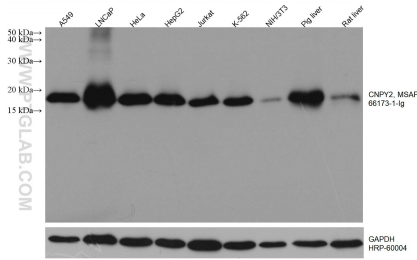
For technical support and original validation data for this product please contact:

T: 1 (888) 4PTGLAB (1-888-478-4522) (toll free  
in USA), or 1(312) 455-8498 (outside USA)

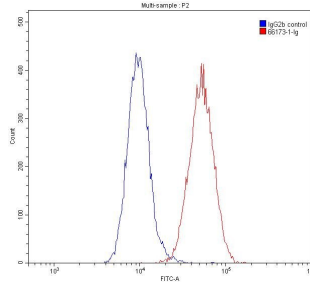
E: proteintech@ptglab.com  
W: ptglab.com

This product is exclusively available under Proteintech Group brand and is not available to purchase from any other manufacturer.

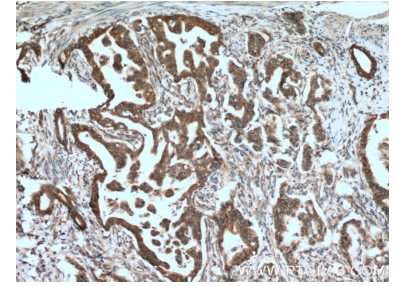
## Données de validation sélectionnées



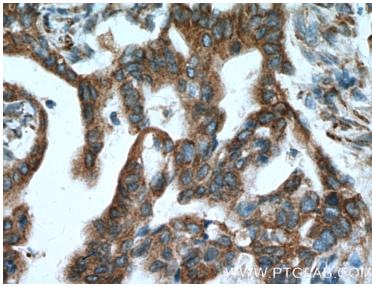
Various lysates were subjected to SDS PAGE followed by western blot with 66173-1-Ig (CNPY2, MSAP antibody) at dilution of 1:5000 incubated at room temperature for 1.5 hours. The membrane was stripped and reblotted with HRP-conjugated GAPDH Monoclonal antibody (HRP-60004) as loading control.



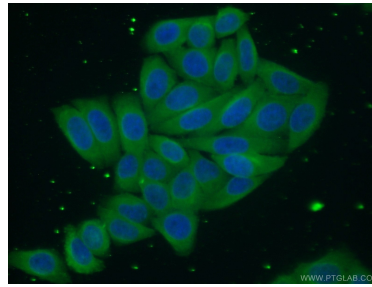
$1 \times 10^6$  HepG2 cells were stained with 0.20ug CNPY2, MSAP antibody (66173-1-Ig, red) and control antibody (blue). Fixed with 90% MeOH.



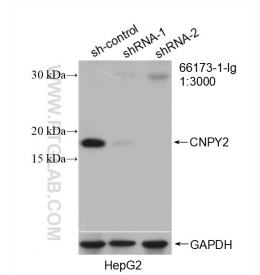
Immunohistochemical analysis of paraffin-embedded human pancreas cancer tissue slide using 66173-1-Ig (CNPY2, MSAP antibody at dilution of 1:500 (under 10x lens). Heat mediated antigen retrieval with Tris-EDTA buffer (pH 9.0).



Immunohistochemical analysis of paraffin-embedded human pancreas cancer tissue slide using 66173-1-Ig (CNPY2, MSAP antibody at dilution of 1:500 (under 40x lens). Heat mediated antigen retrieval with Tris-EDTA buffer (pH 9.0).



Immunofluorescent analysis of (10% Formaldehyde ) fixed HepG2 cells using 66173-1-Ig(CNPY2, MSAP antibody) at dilution of 1:50 and Alexa Fluor 488-conjugated AffiniPure Goat Anti-mouse IgG(H+L).



WB result of CNPY2, MSAP antibody (66173-1-Ig; 1:3000; incubated at room temperature for 1.5 hours) with sh-Control and sh-CNPY2, MSAP transfected HepG2 cells.