

À des fins de recherche uniquement

# Anticorps Monoclonal anti-Zinc Alpha 2 Glycoprotein



Numéro de catalogue: 66178-1-Ig

1 Publications

## Informations de base

Numéro de catalogue: 66178-1-Ig	Numéro d'acquisition GenBank: BC033830	Méthode de purification: Purification par protéine A
Taille: 150ul, Concentration: 1400 µg/ml by Nanodrop and 980 µg/ml by Bradford method using BSA as the standard;	Identification du gène (NCBI): 563	CloneNo.: 4B8A4
Hôte: Mouse	Nom complet: alpha-2-glycoprotein 1, zinc-binding	Dilutions recommandées: WB 1:500-1:2000 IHC 1:20-1:200 IF 1:200-1:800
Isotype: IgG1	MW calculé: 298 aa, 34 kDa	
Immunogen Catalog Number: AG5661	MW observés: 41 kDa	

## Applications

### Applications testées:

IF, IHC, WB, ELISA

### Demandes citées:

IHC, WB

### Spécificité de l'espèce:

Humain

### Espèces citées:

Humain

**Remarque-IHC: il est suggéré de démasquer l'antigène avec un tampon de TE buffer pH 9,0; (\*) A défaut, 'le démasquage de l'antigène peut être 'effectué avec un tampon citrate pH 6,0.**

### Contrôles positifs:

WB : tissu plasmatique humain,

IHC : tissu de cancer du sein humain, tissu de cancer de la prostate humaine, tissu d'hyperplasie de la prostate humaine

IF : tissu de cancer du sein humain,

## Informations générales

Zinc-alpha-2-glycoprotein (AZGP1) is a 41-kDa soluble protein normally found in body fluids, functions as a lipid mobilizing factor (PMID: 19188554). It is known to be expressed in the secretory epithelia of the liver, lung, breast, GI tract and sweat glands, sharing significant structural similarity with the class I major histocompatibility complex (MHC) antigens (PMID: 3422450). AZGP1 is involved in carcinogenesis and differentiation. Altered expression of AZGP1 has been reported in breast cancer, prostate cancer and lung adenocarcinoma, hepatocellular carcinoma, pancreatic carcinoma and oral tumors (PMID: 22625427).

## Publications notables

Autrice	Pubmed ID	Journal	Application
Hong Tang	28053542	Onco Targets Ther	WB,IHC

## Stockage

### Stockage:

Stocker à -20°C. Stable pendant un an après l'expédition.

### Tampon de stockage:

PBS avec azoture de sodium à 0,02 % et glycérol à 50 % pH 7,3

L'aliquotage n'est pas nécessaire pour le stockage à -20C

\*\*\* Les 20ul contiennent 0,1% de BSA.

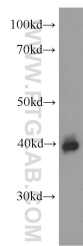
For technical support and original validation data for this product please contact:

T: 1 (888) 4PTGLAB (1-888-478-4522) (toll free in USA), or 1(312) 455-8498 (outside USA)

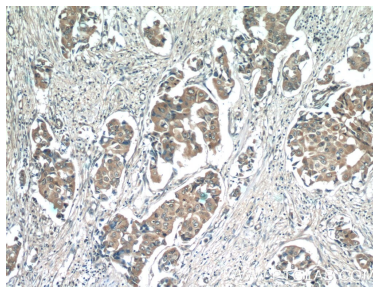
E: proteintech@ptglab.com  
W: ptglab.com

This product is exclusively available under Proteintech Group brand and is not available to purchase from any other manufacturer.

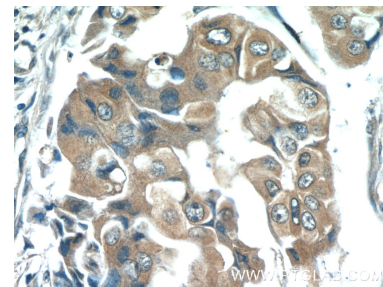
## Données de validation sélectionnées



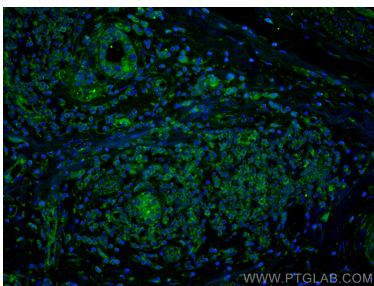
human plasma were subjected to SDS PAGE followed by western blot with 66178-1-Ig (AZGP1 Antibody) at dilution of 1:1000 incubated at room temperature for 1.5 hours.



Immunohistochemical analysis of paraffin-embedded human breast cancer tissue slide using 66178-1-Ig (AZGP1 Antibody) at dilution of 1:50 (under 10x lens).



Immunohistochemical analysis of paraffin-embedded human breast cancer tissue slide using 66178-1-Ig (AZGP1 Antibody) at dilution of 1:50 (under 40x lens).



Immunofluorescent analysis of (4% PFA) fixed human breast cancer tissue using Zinc Alpha 2 Glycoprotein antibody (66178-1-Ig, Clone: 4B8A4) at dilution of 1:400 and CoraLite®488-Conjugated AffiniPure Goat Anti-Mouse IgG(H+L).