

À des fins de recherche uniquement

Anticorps Monoclonal anti-SMARCE1

Numéro de catalogue: 66182-1-Ig



Informations de base

Numéro de catalogue: 66182-1-Ig	Numéro d'acquisition GenBank: BC007082	Méthode de purification: Purification par protéine G
Taille: 150ul , Concentration: 1800 µg/ml by Nanodrop and 1520 µg/ml by Bradford method using BSA as the standard;	Identification du gène (NCBI): 6605	CloneNo.: 1F3D6
Hôte: Mouse	Nom complet: SWI/SNF related, matrix associated, actin dependent regulator of chromatin, subfamily e, member 1	Dilutions recommandées: WB 1:500-1:2000 IHC 1:20-1:200 IF 1:20-1:200
Isotype: IgG1	MW calculé 47 kDa	
Immunogen Catalog Number: AG1161	MW observés: 50-55 kDa	

Applications

Applications testées:

IF, IHC, WB, ELISA

Spécificité de l'espèce:

Humain, rat, souris

Remarque-IHC: il est suggéré de démasquer l'antigène avec un tampon de TE buffer pH 9.0; (*) À défaut, le démasquage de l'antigène peut être effectué avec un tampon citrate pH 6,0.

Contrôles positifs:

WB : cellules Jurkat,

IHC : tissu de cancer du sein humain,

IF : cellules HEK-293,

Informations générales

Via antagonizing chromatin-mediated transcriptional repression, the SWI/SNF complex in *S. cerevisiae* and *Drosophila* is thought to facilitate transcriptional activation of specific genes. The BRG1/brm-associated factors, or SMARCE1, complex in mammals is functionally related to SWI/SNF and consists of 9 to 12 subunits, some of which are homologous to SWI/SNF subunits. It contains a DNA-binding HMG domain and performs multiple biological functions, including DNA-, protein- and chromatin-binding, transcription coactivating activity, chromatin modification, DNA-dependent negative regulation of transcription, regulation of transcription of the RNA polymerase II promoter. In addition, SMARCE1, as an ER (estrogen receptor) subtype-selective modulator, regulates ER mediated transcription in a ligand-dependent manner and also directly binds to AR (androgen receptor) to alter its activity. The calculated molecular weight of SMARCE1 is 47 kDa, but modified SMARCE1 is about 55 kDa.

Stockage

Stockage:

Stocker à -20°C. Stable pendant un an après l'expédition.

Tampon de stockage:

PBS avec azoture de sodium à 0,02 % et glycérol à 50 % pH 7,3

L'aliquotage n'est pas nécessaire pour le stockage à -20C

*** Les 20ul contiennent 0,1% de BSA.

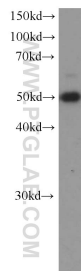
For technical support and original validation data for this product please contact:

T: 1 (888) 4PTGLAB (1-888-478-4522) (toll free in USA), or 1(312) 455-8498 (outside USA)

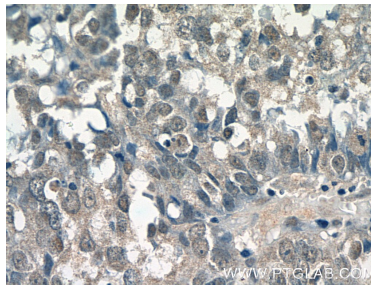
E: proteintech@ptglab.com
W: ptglab.com

This product is exclusively available under Proteintech Group brand and is not available to purchase from any other manufacturer.

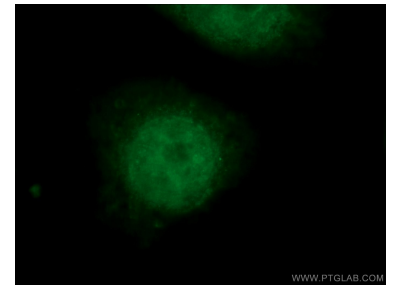
Données de validation sélectionnées



Jurkat cells were subjected to SDS PAGE followed by western blot with 66182-1-Ig (SMARCE1 Antibody) at dilution of 1:1000 incubated at room temperature for 1.5 hours.



Immunohistochemical analysis of paraffin-embedded human breast cancer tissue slide using 66182-1-Ig (SMARCE1 Antibody) at dilution of 1:100 (under 40x lens).



Immunofluorescent analysis of HEK-293 cells using 66182-1-Ig (SMARCE1 antibody) at dilution of 1:50 and FITC-Conjugated AffiniPure Goat Anti-Mouse IgG(H+L).