

À des fins de recherche uniquement

# Anticorps Monoclonal anti-Fibrinogen Beta Chain



Numéro de catalogue: 66186-1-Ig **1 Publications**

## Informations de base

|   |  |  |
|---|--|--|
| <b>Numéro de catalogue:</b><br>66186-1-Ig   | <b>Numéro d'acquisition GenBank:</b><br>BC107766 | <b>Méthode de purification:</b><br>Purification par protéine A |
| <b>Taille:</b><br>150ul, Concentration: 2900 µg/ml by Nanodrop and 1453 µg/ml by Bradford method using BSA as the standard; | <b>Identification du gène (NCBI):</b><br>2244    | <b>CloneNo.:</b><br>1F8E4                                      |
| <b>Hôte:</b><br>Mouse   | <b>Nom complet:</b><br>fibrinogen beta chain     | <b>Dilutions recommandées:</b><br>WB 1:500-1:2000              |
| <b>Isotype:</b><br>IgG2b  | <b>MW calculé:</b><br>491 aa, 56 kDa             |  |
| <b>Immunogen Catalog Number:</b><br>AG10205   | <b>MW observés:</b><br>50 kDa                    |  |

## Applications

|   |   |
|---|---|
| <b>Applications testées:</b><br>WB, ELISA | <b>Contrôles positifs:</b><br>WB : tissu cardiaque humain, tissu cérébral humain foetal |
| <b>Demandes citées:</b><br>WB             |   |
| <b>Spécificité de l'espèce:</b><br>Humain |   |
| <b>Espèces citées:</b><br>Humain          |   |

## Informations générales

Fibrinogen is a soluble plasma glycoprotein synthesized in the liver. It is composed of two sets of three structurally different subunits: alpha (FGA), beta (FGB), gamma (FGG). Fibrinogen is converted by thrombin into fibrin during blood coagulation. Fibrinogen and fibrin play overlapping roles in blood clotting, fibrinolysis, cellular and matrix interactions, the inflammatory response, wound healing, and neoplasia (PMID: 16102057). FGB is the beta chain of fibrinogen. During conversion of fibrinogen to fibrin, fibrinopeptide B is cleaved from FGB by thrombin. Mutations in the gene of FGB lead to several disorders, including afibrinogenemia, dysfibrinogenemia, hypodysfibrinogenemia and thrombotic tendency.

## Publications notables

| Autrice  | Pubmed ID | Journal        | Application |
|----------|-----------|----------------|-------------|
| Yue Guan | 33987362  | Ann Transl Med | WB          |

## Stockage

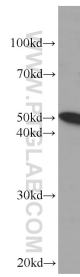
**Stockage:**  
Stocker à -20°C. Stable pendant un an après l'expédition.  
**Tampon de stockage:**  
PBS avec azoture de sodium à 0,02 % et glycérol à 50 % pH 7,3  
L'aliquotage n'est pas nécessaire pour le stockage à -20C

\*\*\* Les 20ul contiennent 0,1% de BSA.

For technical support and original validation data for this product please contact:  
T: 1 (888) 4PTGLAB (1-888-478-4522) (toll free in USA), or 1(312) 455-8498 (outside USA)  
E: proteintech@ptglab.com  
W: ptglab.com

This product is exclusively available under Proteintech Group brand and is not available to purchase from any other manufacturer.

## Données de validation sélectionnées



human heart tissue were subjected to SDS PAGE followed by western blot with 66186-1-Ig (Fibrinogen beta chain antibody at dilution of 1:1000 incubated at room temperature for 1.5 hours.