

À des fins de recherche uniquement

Anticorps Monoclonal anti-Cytokeratin 18



Numéro de catalogue: 66187-1-Ig

11 Publications

Informations de base

Numéro de catalogue:

66187-1-Ig

Taille:

150ul , Concentration: 867 µg/ml by Bradford method using BSA as the standard;

Hôte:

Mouse

Isotype:

IgG1

Immunogen Catalog Number:

AG1260

Numéro d'acquisition GenBank:

BC000180

Identification du gène (NCBI):

3875

Nom complet:

keratin 18

MW calculé

48 kDa

MW observés:

48 kDa

Méthode de purification:

Purification par protéine A

CloneNo.:

1G11C4

Dilutions recommandées:

WB 1:20000-1:100000

IHC 1:600-1:2000

IF 1:200-1:800

Applications

Applications testées:

FC, IF, IHC, WB, ELISA

Demandes citées:

FC, IF, IHC, WB

Spécificité de l'espèce:

Humain, porc, rat, souris

Espèces citées:

Humain, souris

Remarque-IHC: il est suggéré de démasquer l'antigène avec un tampon de TE buffer pH 9.0; (*) À défaut, 'le démasquage de l'antigène peut être effectué avec un tampon citrate pH 6,0.

Contrôles positifs:

WB : cellules HCT 116, cellules 4T1, cellules A431, cellules COLO 320, cellules HeLa, cellules HepG2, cellules K-562, tissu cutané de porc

IHC : tissu rénal humain, tissu d'amygdalite humaine, tissu de cancer du côlon humain, tissu de cancer du foie humain, tissu de cancer du poumon humain, tissu de cancer du sein humain, tissu de carcinome à cellules rénales humaine, tissu hépatique de rat, tissu hépatique de souris, tissu hépatique humaine, tissu rénal de souris

IF : cellules A549, cellules HeLa, cellules HepG2, cellules HUVEC

Informations générales

Keratins are a large family of proteins that form the intermediate filament cytoskeleton of epithelial cells, which are classified into two major sequence types. Type I keratins are a group of acidic intermediate filament proteins, including K9-K23, and the hair keratins Ha1-Ha8. Type II keratins are the basic or neutral counterparts to the acidic type I keratins, including K1-K8, and the hair keratins, Hb1-Hb6. KRT18, also named as CYK18, PIG46 and K18, is the most commonly found members of the intermediate filament gene family. KRT18 is a type I keratin which is found primarily in non squamous epithelia and is present in a majority of adenocarcinomas and ductal carcinomas but not in squamous cell carcinomas.

Publications notables

Autrice	Pubmed ID	Journal	Application
Changmei Yang	36312432	ACS Omega	WB
Qiuli Liu	33009820	J Pathol	IF
Yalan Xu	35841025	Stem Cell Res Ther	IF

Stockage

Stockage:

Stocker à -20°C. Stable pendant un an après l'expédition.

Tampon de stockage:

PBS avec azoture de sodium à 0,02 % et glycérol à 50 % pH 7,3

L'aliquotage n'est pas nécessaire pour le stockage à -20C

*** Les 20ul contiennent 0,1% de BSA.

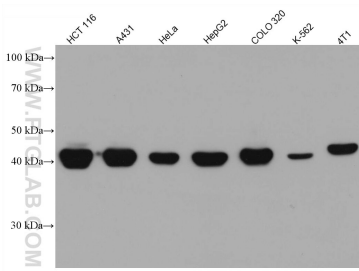
For technical support and original validation data for this product please contact:

T: 1 (888) 4PTGLAB (1-888-478-4522) (toll free in USA), or 1(312) 455-8498 (outside USA)

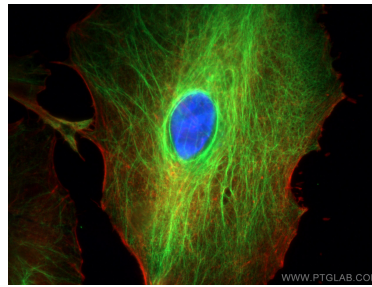
E: proteintech@ptglab.com
W: ptglab.com

This product is exclusively available under Proteintech Group brand and is not available to purchase from any other manufacturer.

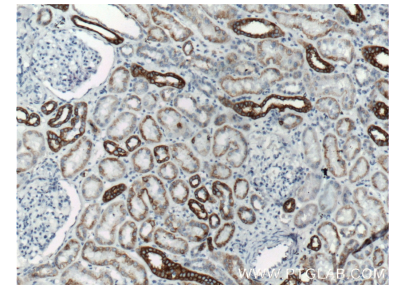
Données de validation sélectionnées



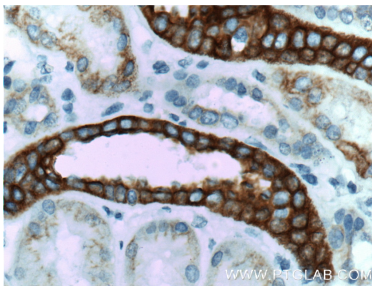
Various lysates were subjected to SDS PAGE followed by western blot with 66187-1-Ig (Cytokeratin 18 antibody) at dilution of 1:100000 incubated at room temperature for 1.5 hours.



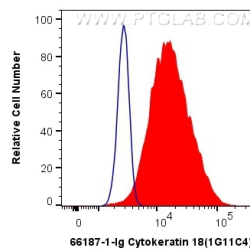
Immunofluorescent analysis of (4% PFA) fixed A549 cells using Cytokeratin 18 antibody (66187-1-Ig, Clone: 1G11C4) at dilution of 1:400 and Coralite®488-Conjugated AffiniPure Goat Anti-Mouse IgG(H+L), CL594-Phalloidin (red).



Immunohistochemical analysis of paraffin-embedded human kidney tissue slide using 66187-1-Ig (Cytokeratin 18 antibody at dilution of 1:1200 (under 10x lens). Heat mediated antigen retrieved with Citric acid buffer, pH6.0.



Immunohistochemical analysis of paraffin-embedded human kidney tissue slide using 66187-1-Ig (Cytokeratin 18 antibody at dilution of 1:1200 (under 40x lens). Heat mediated antigen retrieved with Citric acid buffer, pH6.0.



1×10^6 HeLa cells were intracellularly stained with 0.4 ug Anti-Human Cytokeratin 18 (66187-1-Ig, Clone:1G11C4) and Coralite®488-Conjugated AffiniPure Goat Anti-Mouse IgG(H+L) at dilution 1:1000 (red), or 0.4 ug Mouse IgG1 Isotype Control (MOPC-21) (65124-1-Ig, Clone: MOPC-21) (blue). Cells were fixed with 4% PFA and permeabilized with Flow Cytometry Perm Buffer (PF00011-C).