

À des fins de recherche uniquement

# Anticorps Monoclonal anti-IL-22RA2

Numéro de catalogue: 66190-1-Ig **3 Publications**



## Informations de base

<b>Numéro de catalogue:</b> 66190-1-Ig	<b>Numéro d'acquisition GenBank:</b> BC125167	<b>Méthode de purification:</b> Purification par protéine A
<b>Taille:</b> 150ul, Concentration: 3100 µg/ml by Nanodrop and 1347 µg/ml by Bradford method using BSA as the standard;	<b>Identification du gène (NCBI):</b> 116379	<b>CloneNo.:</b> 5G11A9
<b>Hôte:</b> Mouse	<b>Nom complet:</b> interleukin 22 receptor, alpha 2	<b>Dilutions recommandées:</b> WB 1:500-1:2000 IHC 1:20-1:200 IF 1:200-1:800
<b>Isotype:</b> IgG2a	<b>MW calculé:</b> 263 aa, 31 kDa	
<b>Immunogen Catalog Number:</b> AG18682	<b>MW observés:</b> 35 kDa	

## Applications

### Applications testées:

IF, IHC, WB, ELISA

### Demandes citées:

FC, IF, IHC, WB

### Spécificité de l'espèce:

Humain

### Espèces citées:

Humain, porc

**Remarque-IHC: il est suggéré de démasquer l'antigène avec un tampon de TE buffer pH 9,0; (\*) A défaut, 'le démasquage de l'antigène peut être effectué avec un tampon citrate pH 6,0.**

### Contrôles positifs:

WB : cellules Raji,

IHC : tissu d'intestin grêle humain, tissu de cancer du poumon humain, tissu de cancer du sein humain

IF : tissu de cancer du sein humain,

## Informations générales

Interleukin-22 receptor subunit alpha-2 (IL22RA2) is a soluble member of the type II cytokine receptor family. Through binding to IL22, IL22RA2 prevents the interaction of IL22 with the functional IL22-R complex and blocks the activity of IL22 (in vitro). IL22RA2 may play an important role as an IL22 antagonist in the regulation of inflammatory responses. Alternative splicing results in multiple transcript variants encoding distinct isoforms.

## Publications notables

Autrice	Pubmed ID	Journal	Application
Gui-Yan Yang	28770173	Front Cell Infect Microbiol	WB,IHC
Paloma Gómez-Fernández	31936765	Cells	FC
Paloma Gómez-Fernández	30619294	Front Immunol	WB,IF

## Stockage

### Stockage:

Stocker à -20°C. Stable pendant un an après l'expédition.

### Tampon de stockage:

PBS avec azoture de sodium à 0,02 % et glycérol à 50 % pH 7,3

L'aliquotage n'est pas nécessaire pour le stockage à -20C

**\*\*\* Les 20ul contiennent 0,1% de BSA.**

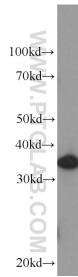
For technical support and original validation data for this product please contact:

T: 1 (888) 4PTGLAB (1-888-478-4522) (toll free in USA), or 1(312) 455-8498 (outside USA)

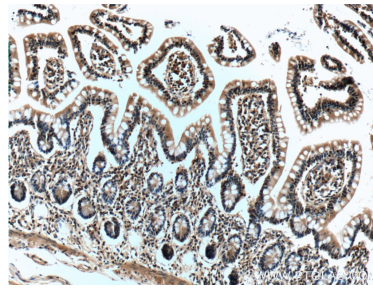
E: proteintech@ptglab.com  
W: ptglab.com

**This product is exclusively available under Proteintech Group brand and is not available to purchase from any other manufacturer.**

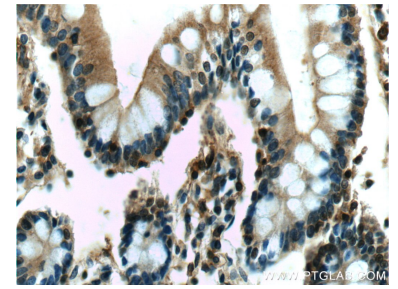
## Données de validation sélectionnées



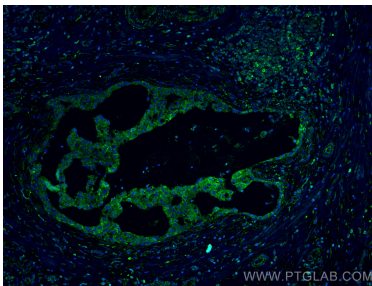
Raji cells were subjected to SDS PAGE followed by western blot with 66190-1-Ig (IL22RA2 Antibody) at dilution of 1:1000 incubated at room temperature for 1.5 hours.



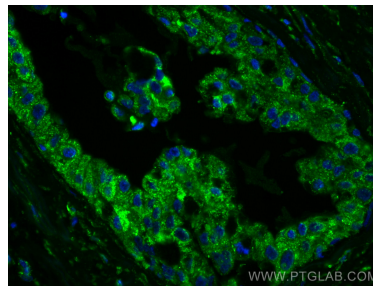
Immunohistochemical analysis of paraffin-embedded human small intestine tissue slide using 66190-1-Ig (IL22RA2 Antibody) at dilution of 1:50 (under 10x lens).



Immunohistochemical analysis of paraffin-embedded human small intestine tissue slide using 66190-1-Ig (IL22RA2 Antibody) at dilution of 1:50 (under 40x lens).



Immunofluorescent analysis of (4% PFA) fixed human breast cancer tissue using IL-22RA2 antibody (66190-1-Ig, Clone: 5G11A9) at dilution of 1:400 and CoraLite®488-Conjugated AffiniPure Goat Anti-Mouse IgG(H+L).



Immunofluorescent analysis of (4% PFA) fixed human breast cancer tissue using IL-22RA2 antibody (66190-1-Ig, Clone: 5G11A9) at dilution of 1:400 and CoraLite®488-Conjugated AffiniPure Goat Anti-Mouse IgG(H+L).