

À des fins de recherche uniquement

Anticorps Monoclonal anti-ERK1/2

Numéro de catalogue: 66192-1-Ig **25 Publications**



Informations de base

Numéro de catalogue: 66192-1-Ig	Numéro d'acquisition GenBank: BC013992	Méthode de purification: Purification par protéine G
Taille: 150ul , Concentration: 1240 µg/ml by Bradford method using BSA as the standard;	Identification du gène (NCBI): 5595	CloneNo.: 4G8A11
Hôte: Mouse	Nom complet: mitogen-activated protein kinase 3	Dilutions recommandées: WB 1:2000-1:10000 IHC 1:2000-1:6000 IF 1:20-1:200
Isotype: IgG1	MW calculé: 43 kDa	
Immunogen Catalog Number: AG20350	MW observés: 38-44 kDa	

Applications

Applications testées:

IF, IHC, WB, ELISA

Demandes citées:

ColP, WB

Spécificité de l'espèce:

Humain, souris

Espèces citées:

Humain, rat, souris

Remarque-IHC: il est suggéré de démasquer l'antigène avec un tampon de TE buffer pH 9,0; (*) A défaut, 'le démasquage de l'antigène peut être effectué avec un tampon citrate pH 6,0.

Contrôles positifs:

WB : cellules HeLa, cellules HEK-293, cellules HepG2, cellules HSC-T6, cellules Jurkat, cellules MCF-7, cellules NIH/3T3

IHC : tissu de tumeur ovarienne humain, tissu de cancer du col de l'utérus humain

IF : cellules HepG2,

Informations générales

ERK1 and ERK2 belongs to the protein kinase superfamily. It is involved in both the initiation and regulation of meiosis, mitosis, and postmitotic functions in differentiated cells by phosphorylating a number of transcription factors such as ELK-1. ERK1/2 catalized the reaction: ATP + a protein = ADP + a phosphoprotein. It is activated by tyrosine phosphorylation in response to INS and NGF. This antibody can recognize both ERK1 and ERK2 with the molecular mass of 38-44 kDa.

Publications notables

Autrice	Pubmed ID	Journal	Application
Li Li	36166754	Br J Pharmacol	WB
Zhichao Dou	32956704	Exp Cell Res	WB
Mengnan Hu	36064579	Oncogene	WB

Stockage

Stockage:

Stocker à -20°C. Stable pendant un an après l'expédition.

Tampon de stockage:

PBS avec azoture de sodium à 0,02 % et glycérol à 50 % pH 7,3

L'aliquotage n'est pas nécessaire pour le stockage à -20C

*** Les 20ul contiennent 0,1% de BSA.

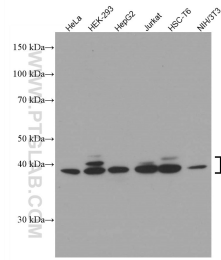
For technical support and original validation data for this product please contact:

T: 1 (888) 4PTGLAB (1-888-478-4522) (toll free in USA), or 1(312) 455-8498 (outside USA)

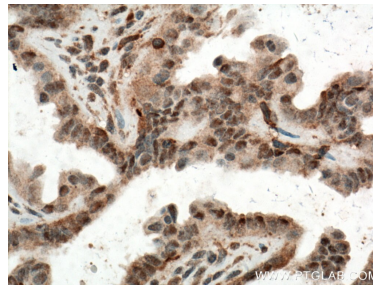
E: proteintech@ptglab.com
W: ptglab.com

This product is exclusively available under Proteintech Group brand and is not available to purchase from any other manufacturer.

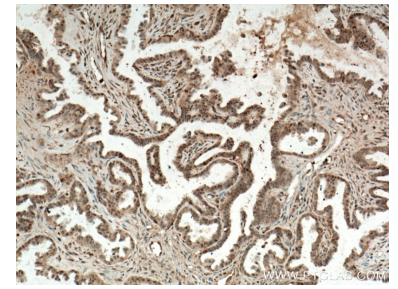
Données de validation sélectionnées



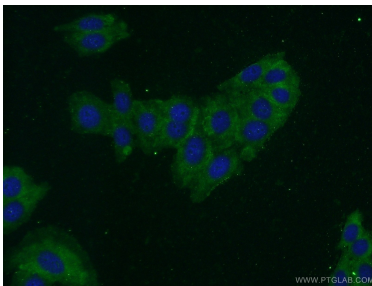
Various lysates were subjected to SDS PAGE followed by western blot with 66192-1-Ig (ERK1/2 antibody) at dilution of 1:10000 incubated at room temperature for 1.5 hours.



Immunohistochemical analysis of paraffin-embedded human ovary tumor tissue slide using 66192-1-Ig (ERK1/2 antibody) at dilution of 1:4000 (under 40x lens. Heat mediated antigen retrieval with Tris-EDTA buffer (pH 9.0).



Immunohistochemical analysis of paraffin-embedded human ovary tumor tissue slide using 66192-1-Ig (ERK1/2 antibody) at dilution of 1:4000 (under 10x lens. Heat mediated antigen retrieval with Tris-EDTA buffer (pH 9.0).



Immunofluorescent analysis of HepG2 cells using 66192-1-Ig (ERK1/2 antibody) at dilution of 1:50 and Alexa Fluor 488-conjugated AffiniPure Goat Anti-Mouse IgG (H+L).