

À des fins de recherche uniquement

Anticorps Monoclonal anti-MTA2

Numéro de catalogue: 66195-1-Ig

Phare

4 Publications



Informations de base

Numéro de catalogue: 66195-1-Ig	Numéro d'acquisition GenBank: BC053650	Méthode de purification: Purification par protéine A
Taille: 150ul, Concentration: 1900 µg/ml by Nanodrop and 1400 µg/ml by Bradford method using BSA as the standard;	Identification du gène (NCBI): 9219	CloneNo.: 2G12G4
Hôte: Mouse	Nom complet: metastasis associated 1 family, member 2	Dilutions recommandées: WB 1:5000-1:50000 IHC 1:500-1:2000 IF 1:125-1:500
Isotype: IgG2b	MW calculé: 668 aa, 75 kDa	
Immunogen Catalog Number: AG11713	MW observés: 75 kDa	

Applications

Applications testées:
FC, IF, IHC, WB, ELISA

Demandes citées:
IF, WB

Spécificité de l'espèce:
Humain, rat, souris

Espèces citées:
Humain

Remarque-IHC: il est suggéré de démasquer l'antigène avec un tampon de TE buffer pH 9,0; (*) A défaut, 'le démasquage de l'antigène peut être effectué avec un tampon citrate pH 6,0.

Contrôles positifs:

WB : cellules SW480, cellules 4T1, cellules HEK-293, cellules HeLa, cellules HepG2, cellules HSC-T6, cellules Jurkat, cellules K-562, cellules NIH/3T3

IHC : tissu cérébral de souris,

IF : cellules HepG2,

Informations générales

Metastasis-associated protein MTA2, also named as MTA1L1 or PID, is a 668 amino acid protein, which contains one BAH domain, one ELM2 domain, one GATA-type zinc finger and one SANT domain. MTA2 localizes in the nucleus and is widely expressed in many tissues. MTA2 may be involved in the regulation of gene expression as repressor and activator.

Publications notables

Autrice	Pubmed ID	Journal	Application
Shanshan Li	33014158	Oncol Lett	WB
Yayuan Zheng	35884488	Cancers (Basel)	WB
Zhu Zeng	31410216	Theranostics	WB,IF

Stockage

Stockage:

Stocker à -20°C. Stable pendant un an après l'expédition.

Tampon de stockage:

PBS avec azoture de sodium à 0,02 % et glycérol à 50 % pH 7,3

L'aliquotage n'est pas nécessaire pour le stockage à -20C

*** Les 20ul contiennent 0,1% de BSA.

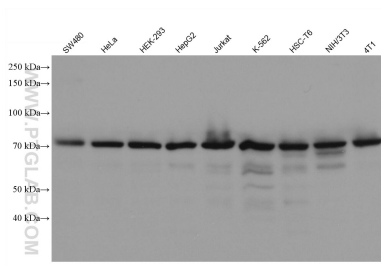
For technical support and original validation data for this product please contact:

T: 1 (888) 4PTGLAB (1-888-478-4522) (toll free in USA), or 1(312) 455-8498 (outside USA)

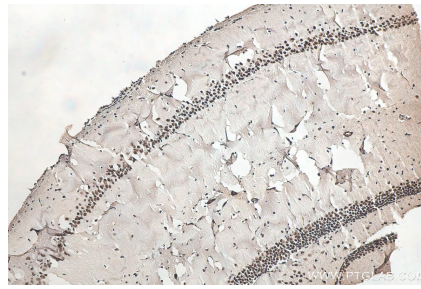
E: proteintech@ptglab.com
W: ptglab.com

This product is exclusively available under Proteintech Group brand and is not available to purchase from any other manufacturer.

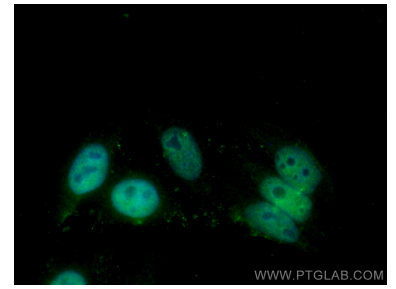
Données de validation sélectionnées



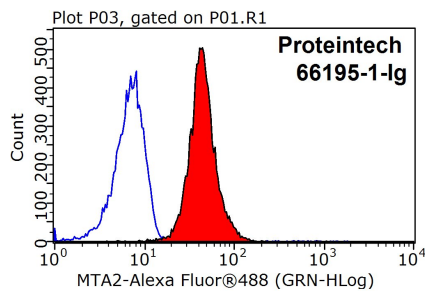
Various lysates were subjected to SDS PAGE followed by western blot with 66195-1-Ig (MTA2 antibody) at dilution of 1:10000 incubated at room temperature for 1.5 hours.



Immunohistochemical analysis of paraffin-embedded mouse brain tissue slide using 66195-1-Ig (MTA2 antibody) at dilution of 1:1000 (under 10x lens). Heat mediated antigen retrieval with Tris-EDTA buffer (pH 9.0).



Immunofluorescent analysis of (4% PFA) fixed HepG2 cells using MTA2 antibody (66195-1-Ig, Clone: 2G12G4) at dilution of 1:250 and CoraLite®488-Conjugated AffiniPure Goat Anti-Mouse IgG(H+L).



1X10⁶ HepG2 cells were stained with .2ug MTA2 antibody (66195-1-Ig, red) and control antibody (blue). Fixed with 90% MeOH blocked with 3% BSA (30 min). Alexa Fluor 488-conjugated AffiniPure Goat Anti-Mouse IgG(H+L) with dilution 1:1000.