

À des fins de recherche uniquement

# Anticorps Monoclonal anti-acetylated Tubulin(Lys40)



Numéro de catalogue: 66200-1-Ig

70 Publications

## Informations de base

Numéro de catalogue: 66200-1-Ig	Numéro d'acquisition GenBank: NML_006009	Méthode de purification: Purification par protéine G
Taille: 150ul , Concentration: 1400 µg/ml by Nanodrop and 700 µg/ml by Bradford method using BSA as the standard;	Identification du gène (NCBI): 7846	CloneNo.: 7E5H8
Hôte: Mouse	Nom complet: tubulin, alpha 1a	Dilutions recommandées: WB 1:2000-1:10000 IHC 1:1000-1:4000 IF 1:50-1:500
Isotype: IgG1	MW calculé: 52 kDa	
	MW observés: 50-55 kDa	

## Applications

### Applications testées:

IF, IHC, WB, ELISA

### Demandes citées:

IF, IHC, WB

### Spécificité de l'espèce:

canin, Humain, porc, rat, souris

### Espèces citées:

bovin, Drosophile, Humain, poisson-zèbre, porc, rat, souris

**Remarque-IHC: il est suggéré de démasquer l'antigène avec un tampon de TE buffer pH 9,0; (\*) À défaut, 'le démasquage de l'antigène peut être 'effectué avec un tampon citrate pH 6,0.**

### Contrôles positifs:

**WB** : tissu testiculaire de rat, cellules HEK-293, cellules LO2, cellules NCCIT, cellules Neuro-2a, testicule de souris, tissu cérébral de rat, tissu de cervelet de porc, tissu ovarien de souris

**IHC** : tissu ovarien de souris, tissu cérébral de rat, tissu cérébral de souris, tissu de cancer du poumon humain, tissu de gliome humain

**IF** : cellules MDCK, tissu cérébral de souris

## Informations générales

Tubulin, composed of heterodimers of alpha and beta tubulin, is the mainly component of microtubules which play important roles in cell motility, mitosis, and intracellular vesicle transport. Both alpha and beta tubulin undergo several posttranslational modifications such as polyglutamylolation and acetylation/deacetylation. Tubulin acetylation occurs on lysine-40 at the N-terminal of alpha tubulin and is conserved across species. The histone deacetylase HDAC6 and SIRT2 has been identified as tubulin deacetylases. Reversible acetylation of alpha tubulin may be implicated in regulating microtubule stability, cell motility, and axon regeneration. The level of acetylated tubulin has been linked to epithelial malignancies and sensitivity to chemotherapy. In addition, acetylated tubulin has been widely used as a marker for primary cilia. This antibody is specific to the acetylated tubulin; it does not recognize non-acetylated tubulin. (24268707, 23881549)

## Publications notables

Autrice	Pubmed ID	Journal	Application
Yan Yan	28966044	Dev Cell	WB
Jung Hoon Cho	36149960	Sci Adv	IHC
Zipeng A. Li	36213262	Front Endocrinol (Lausanne)	IF

## Stockage

### Stockage:

Stocker à -20°C. Stable pendant un an après l'expédition.

### Tampon de stockage:

PBS avec azoture de sodium à 0,02 % et glycérol à 50 % pH 7,3

L'aliquotage n'est pas nécessaire pour le stockage à -20C

\*\*\* Les 20ul contiennent 0,1% de BSA.

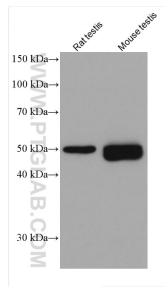
For technical support and original validation data for this product please contact:

T: 1 (888) 4PTGLAB (1-888-478-4522) (toll free in USA), or 1(312) 455-8498 (outside USA)

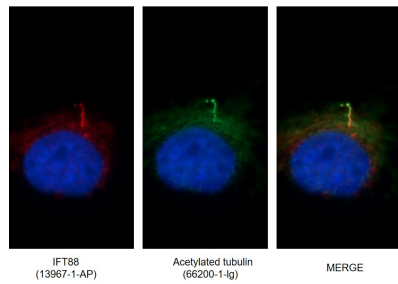
E: proteintech@ptglab.com  
W: ptglab.com

This product is exclusively available under Proteintech Group brand and is not available to purchase from any other manufacturer.

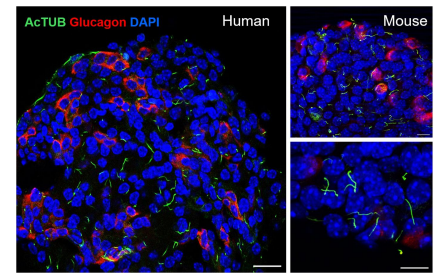
## Données de validation sélectionnées



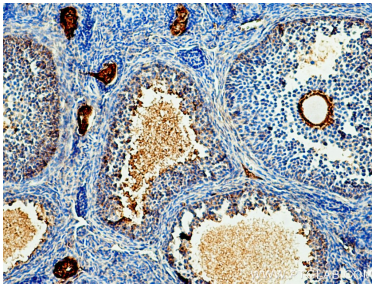
Various lysates were subjected to SDS PAGE followed by western blot with 66200-1-Ig (acetylated Tubulin(Lys40) antibody) at dilution of 1:5000 incubated at room temperature for 1.5 hours.



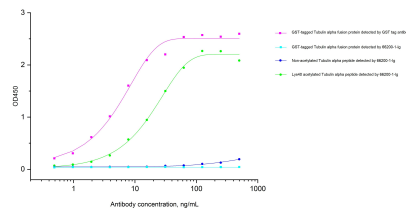
Immunofluorescent images of MDCK cells stained for IFT88 rabbit pAb (13967-1-AP) and acetylated tubulin mouse mAb (66200-1-Ig) at dilution of 1:50, further stained with Alexa Fluor 594-conjugated AffiniPure Goat Anti-Rabbit IgG (H+L) for 13967-1-AP, and Alexa Fluor 488-conjugated AffiniPure Goat anti-Mouse IgG (H+L) for 66200-1-Ig.



(left) Confocal image of a single-plane cross-section of a healthy human islet, showing primary cilia on both alpha cells (glucagon, red) and non-alpha cells (non-red). Acetylated alpha tubulin, cilia (green, Cat. No 66200-1-Ig, 1:400), nuclei (blue), scale 20 µm. (right) Primary cilia in wildtype B6 mouse islets: acetylated alpha tubulin (green, Cat. No 66200-1-Ig, 1:400), glucagon (red), nuclei (blue), single-plane images, scales 10 µm. (Fig from Dr. Jing Hughes)



Immunohistochemical analysis of paraffin-embedded mouse ovary tissue slide using 66200-1-Ig (acetylated Tubulin(Lys40) antibody) at dilution of 1:2000 (under 10x lens). Heat mediated antigen retrieval with Tris-EDTA buffer (pH 9.0).



Specificity validation by indirect ELISA. Indirect ELISA was carried out by coating E.coli expressed GST-tagged Tubulin alpha (70 ng/well), non-acetylated Tubulin alpha, and Lys40 acetylated Tubulin alpha (with excessive amount) followed by blocking and adding serial diluted GST tag primary antibody (Cat.NO. 66001-2-Ig) and Acetylated Tubulin antibody 66200-1-Ig respectively. HRP-Goat anti-mouse secondary antibody was used for detection. Signal was developed with