

À des fins de recherche uniquement

Anticorps Monoclonal anti-SERPINE2



Numéro de catalogue: 66203-1-Ig **2 Publications**

Informations de base

Numéro de catalogue: 66203-1-Ig	Numéro d'acquisition GenBank: BC015663	Méthode de purification: Purification par protéine G
Taille: 150ul , Concentration: 867 µg/ml by Bradford method using BSA as the standard;	Identification du gène (NCBI): 5270	CloneNo.: 1E11F12
Hôte: Mouse	Nom complet: serpin peptidase inhibitor, clade E (nexin, plasminogen activator inhibitor type 1), member 2	Dilutions recommandées: WB 1:5000-1:50000 IHC 1:50-1:500 IF 1:200-1:800
Isotype: IgG1	MW calculé 44 kDa	
Immunogen Catalog Number: AG1830	MW observés: 44 kDa	

Applications

Applications testées:

IF, IHC, WB, ELISA

Demandes citées:

IHC, WB

Spécificité de l'espèce:

Humain, rat, souris

Espèces citées:

Humain

Remarque-IHC: il est suggéré de démasquer l'antigène avec un tampon de TE buffer pH 9,0; (*) A défaut, 'le démasquage de l'antigène peut être 'effectué avec un tampon citrate pH 6,0.

Contrôles positifs:

WB : cellules hTERT-RPE1, cellules C6, cellules HEK-293, cellules MG U-87, cellules Neuro-2a, cellules U-251

IHC : tissu placentaire humain, tissu testiculaire humain

IF : cellules HEK-293,

Informations générales

SERPINE2 also called protease nexin-1 or glial-derived neurite promoting factor, is a member of the serine protease inhibitor (SERPIN) superfamily. It would be a potent inhibitor of the urokinase-plasminogen activator (uPA), tissue-type PA (tPA), thrombin, trypsin, factor X_{IIa}, and prostasin. SERPINE2 is widely expressed in various tissues, including endothelial cells, fibroblasts, smooth muscle cells, tumor cells, glial cells, neurons, and placental cells.

Publications notables

Autrice	Pubmed ID	Journal	Application
Ying Yang	29556291	Oncol Lett	IHC
Xiyang Zhang	33363167	Front Cell Dev Biol	WB

Stockage

Stockage:

Stocker à -20°C. Stable pendant un an après l'expédition.

Tampon de stockage:

PBS avec azoture de sodium à 0,02 % et glycérol à 50 % pH 7,3

L'aliquotage n'est pas nécessaire pour le stockage à -20C

*** Les 20ul contiennent 0,1% de BSA.

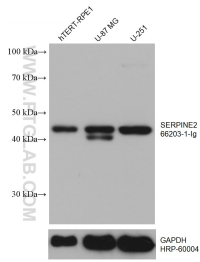
For technical support and original validation data for this product please contact:

T: 1 (888) 4PTGLAB (1-888-478-4522) (toll free in USA), or 1(312) 455-8498 (outside USA)

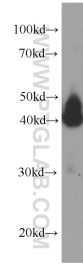
E: proteintech@ptglab.com
W: ptglab.com

This product is exclusively available under Proteintech Group brand and is not available to purchase from any other manufacturer.

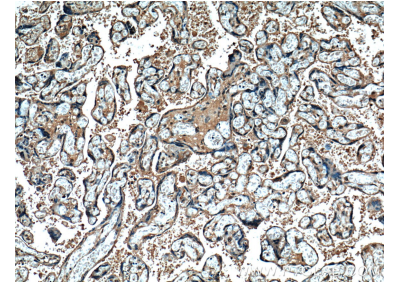
Données de validation sélectionnées



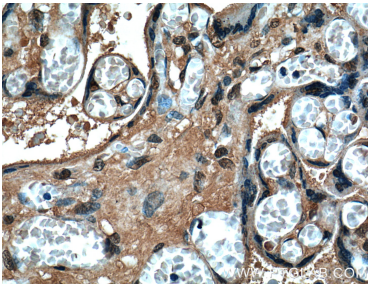
Various lysates were subjected to SDS PAGE followed by western blot with 66203-1-Ig (SERPINE2 antibody) at dilution of 1:10000 incubated at room temperature for 1.5 hours. The membrane was stripped and reblotted with HRP-conjugated GAPDH Monoclonal antibody (HRP-60004) as loading control.



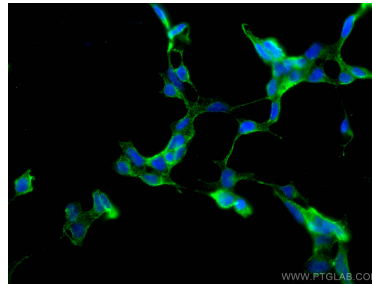
HEK-293 cells were subjected to SDS PAGE followed by western blot with 66203-1-Ig (SERPINE2 Antibody) at dilution of 1:2000 incubated at room temperature for 1.5 hours.



Immunohistochemical analysis of paraffin-embedded human placenta tissue slide using 66203-1-Ig (SERPINE2 Antibody) at dilution of 1:200 (under 10x lens).



Immunohistochemical analysis of paraffin-embedded human placenta tissue slide using 66203-1-Ig (SERPINE2 Antibody) at dilution of 1:200 (under 40x lens).



Immunofluorescent analysis of (4% PFA) fixed HEK-293 cells using SERPINE2 antibody (66203-1-Ig, Clone: 1E11F12) at dilution of 1:400 and Coralite® 488-Conjugated AffiniPure Goat Anti-Mouse IgG(H+L).