

À des fins de recherche uniquement

Anticorps Monoclonal anti-Myoglobin



Numéro de catalogue: 66205-1-Ig

Informations de base

Numéro de catalogue: 66205-1-Ig	Numéro d'acquisition GenBank: BC014547	Méthode de purification: Purification par protéine A
Taille: 150ul, Concentration: 600 µg/ml by Nanodrop and 407 µg/ml by Bradford method using BSA as the standard;	Identification du gène (NCBI): 4151	CloneNo.: 1A4F7
Hôte: Mouse	Nom complet: myoglobin	Dilutions recommandées: WB 1:5000-1:80000 IHC 1:50-1:500
Isotype: IgG1	MW calculé: 154 aa, 17 kDa	
Immunogen Catalog Number: AG8979	MW observés: 17-18 kDa	

Applications

Applications testées:

FC, IHC, WB, ELISA

Spécificité de l'espèce:

Humain, Lapin, porc, rat, souris

Remarque-IHC: il est suggéré de démasquer l'antigène avec un tampon de TE buffer pH 9.0; (*) À défaut, le démasquage de l'antigène peut être effectué avec un tampon citrate pH 6,0.

Contrôles positifs:

WB : tissu de muscle squelettique humain, tissu cardiaque de lapin, tissu cardiaque de porc, tissu cardiaque de rat, tissu cardiaque de souris, tissu cardiaque humain

IHC : tissu cardiaque humain, tissu cardiaque de rat, tissu lingual de souris

Informations générales

Myoglobin is a cytoplasmic hemoprotein that is expressed primarily in cardiomyocytes and oxidative skeletal muscle fibers, functioning on facilitating oxygen transport and modulating nitric oxide homeostasis within cardiac and skeletal myocytes. Recent studies indicated that myoglobin was also expressed in non-muscle tissues. This antibody well recognized endogenous myoglobin in muscle lysates.

Stockage

Stockage:

Stocker à -20°C. Stable pendant un an après l'expédition.

Tampon de stockage:

PBS avec azoture de sodium à 0,02 % et glycérol à 50 % pH 7,3

L'aliquotage n'est pas nécessaire pour le stockage à -20C

*** Les 20ul contiennent 0,1% de BSA.

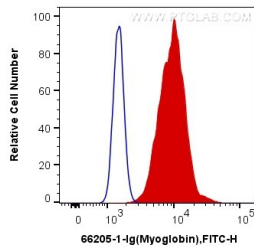
For technical support and original validation data for this product please contact:

T: 1 (888) 4PTGLAB (1-888-478-4522) (toll free in USA), or 1(312) 455-8498 (outside USA)

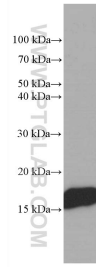
E: proteintech@ptglab.com
W: ptglab.com

This product is exclusively available under Proteintech Group brand and is not available to purchase from any other manufacturer.

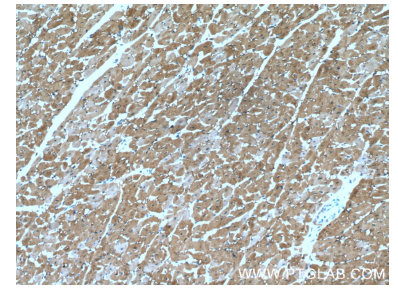
Données de validation sélectionnées



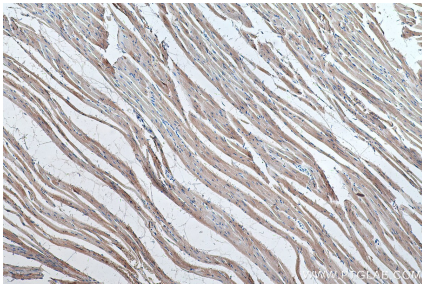
1X10⁶ C2C12 cells were intracellularly stained with 0.4 ug Anti-Human Myoglobin (66205-1-Ig, Clone:1A4F7) and Coralite@488-Conjugated AffiniPure Goat Anti-Mouse IgG(H+L) at dilution 1:1000 (red), or 0.4 ug Control Antibody. Cells were fixed with 4% PFA and permeabilized with Flow Cytometry Perm Buffer (PF00011-C).



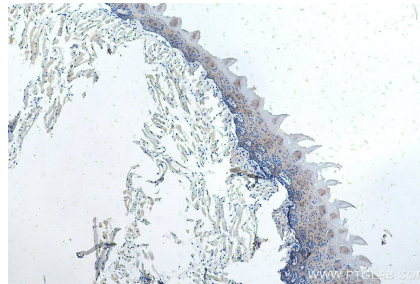
human skeletal muscle tissue were subjected to SDS PAGE followed by western blot with 66205-1-Ig (Myoglobin antibody at dilution of 1:50000 incubated at room temperature for 1.5 hours.



Immunohistochemical analysis of paraffin-embedded human heart tissue slide using 66205-1-Ig (Myoglobin antibody at dilution of 1:200 (under 10x lens).



Immunohistochemical analysis of paraffin-embedded rat heart tissue slide using 66205-1-Ig (Myoglobin antibody) at dilution of 1:8000 (under 10x lens). Heat mediated antigen retrieval with Tris-EDTA buffer (pH 9.0).



Immunohistochemical analysis of paraffin-embedded mouse tongue tissue slide using 66205-1-Ig (Myoglobin antibody) at dilution of 1:8000 (under 10x lens). Heat mediated antigen retrieval with Tris-EDTA buffer (pH 9.0).