

À des fins de recherche uniquement

# Anticorps Monoclonal anti-Apolipoprotein A1



Numéro de catalogue: 66206-1-Ig **7 Publications**

## Informations de base

Numéro de catalogue: 66206-1-Ig	Numéro d'acquisition GenBank: BC005380	Méthode de purification: Purification par protéine A
Taille: 150ul , Concentration: 1067 µg/ml by Bradford method using BSA as the standard;	Identification du gène (NCBI): 335	CloneNo.: 1C9G5
Hôte: Mouse	Nom complet: apolipoprotein A-I	Dilutions recommandées: WB 1:1000-1:4000 IHC 1:50-1:500 IF 1:50-1:500
Isotype: IgG2b	MW calculé: 31 kDa	
Immunogen Catalog Number: AG21920	MW observés: 26-28 kDa	

## Applications

Applications testées:  
FC, IF, IHC, WB, ELISA

Demandes citées:  
WB

Spécificité de l'espèce:  
Humain, souris

Espèces citées:  
Humain, rat, souris

**Remarque-IHC: il est suggéré de démasquer l'antigène avec un tampon de TE buffer pH 9,0; (\*) A défaut, 'le démasquage de l'antigène peut être effectué avec un tampon citrate pH 6,0.**

Contrôles positifs:

WB : tissu plasmatique humain,

IHC : tissu de cancer du foie humain, tissu rénal de souris

IF : cellules HepG2,

## Informations générales

ApoA1 is a major protein component of high density lipoproteins (HDL) which is associated with reversed cholesterol transport, lipid/cholesterol binding, lecithin/cholesterol acyltransferase (LCAT) activation and specific receptors binding. It is synthesized in the liver and small intestine. Defects of ApoA1 cause low HDL level and systemic non-neuropathic amyloidosis. Serum concentration of ApoA1 is inversely related to the risk of developing atherosclerosis. This antibody was generated against the C-terminal region of human ApoA1.

## Publications notables

Autrice	Pubmed ID	Journal	Application
Hideaki Morishita	31526472	Elife	WB
Ying Zhang	36172518	Front Nutr	WB
Zhonghao Li	36498935	Int J Mol Sci	WB

## Stockage

Stockage:

Stocker à -20°C. Stable pendant un an après l'expédition.

Tampon de stockage:

PBS avec azoture de sodium à 0,02 % et glycérol à 50 % pH 7,3

L'aliquotage n'est pas nécessaire pour le stockage à -20C

\*\*\* Les 20ul contiennent 0,1% de BSA.

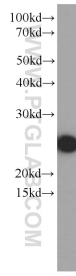
For technical support and original validation data for this product please contact:

T: 1 (888) 4PTGLAB (1-888-478-4522) (toll free in USA), or 1(312) 455-8498 (outside USA)

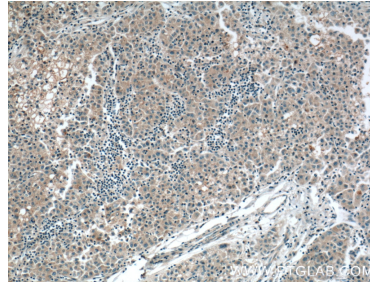
E: proteintech@ptglab.com  
W: ptglab.com

This product is exclusively available under Proteintech Group brand and is not available to purchase from any other manufacturer.

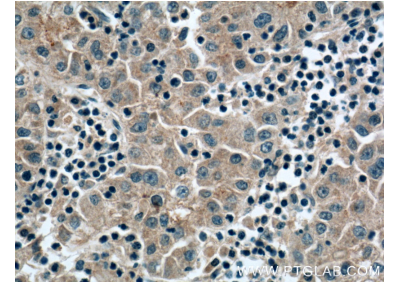
## Données de validation sélectionnées



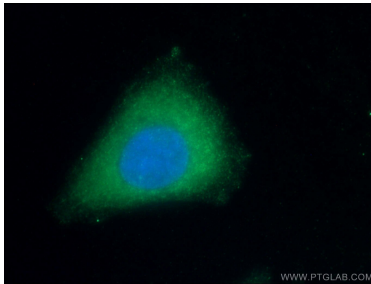
human plasma were subjected to SDS PAGE followed by western blot with 66206-1-Ig (APOA1 Antibody) at dilution of 1:2000 incubated at room temperature for 1.5 hours.



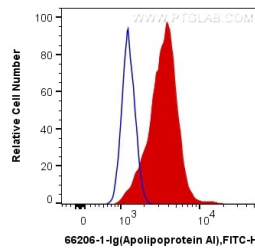
Immunohistochemical analysis of paraffin-embedded human liver cancer tissue slide using 66206-1-Ig (APOA1 Antibody) at dilution of 1:400 (under 10x lens). Heat mediated antigen retrieval with Tris-EDTA buffer (pH 9.0).



Immunohistochemical analysis of paraffin-embedded human liver cancer tissue slide using 66206-1-Ig (APOA1 Antibody) at dilution of 1:400 (under 40x lens). Heat mediated antigen retrieval with Tris-EDTA buffer (pH 9.0).



Immunofluorescent analysis of (-20°C Ethanol) fixed HepG2 cells using 66206-1-Ig (APOA1 antibody) at dilution of 1:100 and Alexa Fluor 488-conjugated AffiniPure Goat Anti-Mouse IgG(H+L).



1X10<sup>6</sup> HepG2 cells were intracellularly stained with 0.4 ug Anti-Human Apolipoprotein AI (66206-1-Ig, Clone:1C9G5) and Coralite®488-Conjugated AffiniPure Goat Anti-Mouse IgG(H+L) at dilution 1:1000 (red), or 0.4 ug Control Antibody. Cells were fixed with 4% PFA and permeabilized with Flow Cytometry Perm Buffer (PF00011-C).