

À des fins de recherche uniquement

# Anticorps Monoclonal anti-Beta-2-Microglobulin



Numéro de catalogue: 66207-1-Ig

## Informations de base

Numéro de catalogue: 66207-1-Ig	Numéro d'acquisition GenBank: BC032589	Méthode de purification: Purification par protéine A
Taille: 150ul, Concentration: 1460 µg/ml by Bradford method using BSA as the standard;	Identification du gène (NCBI): 567	CloneNo.: 1C3B7
Hôte: Mouse	Nom complet: beta-2-microglobulin	Dilutions recommandées: WB 1:1000-1:8000 IHC 1:20-1:200 IF 1:200-1:800
Isotype: IgG2b	MW calculé: 14 kDa	
	MW observés: 13 kDa	

## Applications

### Applications testées:

IF, IHC, WB, ELISA

### Spécificité de l'espèce:

Humain

**Remarque-IHC: il est suggéré de démasquer l'antigène avec un tampon de TE buffer pH 9,0; (\*) À défaut, le démasquage de l'antigène peut être effectué avec un tampon citrate pH 6,0.**

### Contrôles positifs:

WB : cellules Raji,

IHC : tissu de cancer de la prostate humain, tissu de carcinome à cellules rénales humain

IF : tissu de cancer de la prostate humain,

## Informations générales

Beta-2-microglobulin (B2M) is a component of MHC class I molecules, which are present on the surface of nearly all nucleated cells. It can be found in body fluids under physiologic conditions as a result of shedding from cell surfaces or intracellular release. B2M has various biological functions, including antigen presentation. Investigations reveal that increased synthesis and release of B2M are present in several malignant diseases.

## Stockage

### Stockage:

Stocker à -20°C. Stable pendant un an après l'expédition.

### Tampon de stockage:

PBS avec azoture de sodium à 0,02 % et glycérol à 50 % pH 7,3

L'aliquotage n'est pas nécessaire pour le stockage à -20C

**\*\*\* Les 20ul contiennent 0,1% de BSA.**

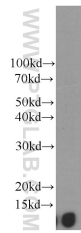
For technical support and original validation data for this product please contact:

T: 1 (888) 4PTGLAB (1-888-478-4522) (toll free  
in USA), or 1(312) 455-8498 (outside USA)

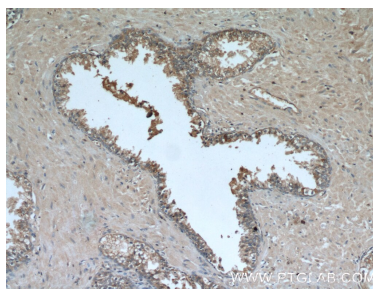
E: proteintech@ptglab.com  
W: ptglab.com

This product is exclusively available under Proteintech Group brand and is not available to purchase from any other manufacturer.

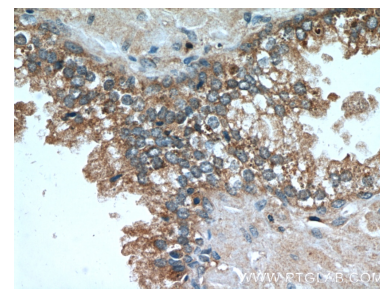
## Données de validation sélectionnées



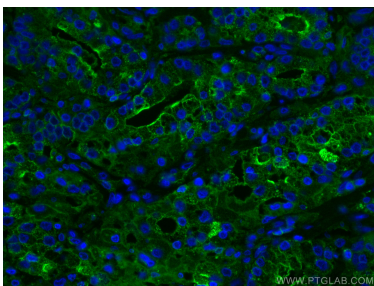
Raji cells were subjected to SDS PAGE followed by western blot with 66207-1-Ig (B2M Antibody) at dilution of 1:4000 incubated at room temperature for 1.5 hours.



Immunohistochemical analysis of paraffin-embedded human prostate cancer tissue slide using 66207-1-Ig (B2M Antibody) at dilution of 1:200 (under 10x lens).



Immunohistochemical analysis of paraffin-embedded human prostate cancer tissue slide using 66207-1-Ig (B2M Antibody) at dilution of 1:200 (under 40x lens).



Immunofluorescent analysis of (4% PFA) fixed human prostate cancer tissue using Beta-2-Microglobulin antibody (66207-1-Ig, Clone: 1C3B7) at dilution of 1:400 and CoraLite®488-Conjugated AffiniPure Goat Anti-Mouse IgG(H+L).