

À des fins de recherche uniquement

Anticorps Monoclonal anti-MYH2-specific



Numéro de catalogue: 66212-1-Ig **2 Publications**

Informations de base

Numéro de catalogue: 66212-1-Ig	Numéro d'acquisition GenBank: NM_017534	Méthode de purification: Purification par protéine A
Taille: 150ul , Concentration: 1800 µg/ml by Nanodrop and 900 µg/ml by Bradford method using BSA as the standard;	Identification du gène (NCBI): 4620	CloneNo.: 1F1B6
Hôte: Mouse	Nom complet: myosin, heavy chain 2, skeletal muscle, adult	Dilutions recommandées: WB 1:5000-1:10000 IHC 1:2000-1:8000
Isotype: IgG2b	MW calculé: 223 kDa	
	MW observés: 200 kDa	

Applications

Applications testées:

IHC, WB, ELISA

Demandes citées:

WB

Spécificité de l'espèce:

Humain, souris

Remarque-IHC: il est suggéré de démasquer l'antigène avec un tampon de TE buffer pH 9.0; (*) À défaut, le démasquage de l'antigène peut être effectué avec un tampon citrate pH 6,0.

Contrôles positifs:

WB : tissu de muscle squelettique humain,

IHC : tissu cardiaque de souris, tissu de muscle squelettique de rat, tissu de muscle squelettique de souris, tissu de muscle squelettique humain, tissu lingual de souris

Informations générales

MYH2 (Myosin II) is a member of the class II or conventional myosin heavy chains. Myosin II was first isolated from muscle but is also found in non muscle cells, and it is especially enriched in highly motile cell types such as amoebae. It forms bipolar filaments that interact with actin filaments to produce contraction. And it is the motor protein that generates force to drive muscle contraction. Functions in skeletal muscle contraction. The antibody is specific to MYH2, will not bind other myosins. It is a skeletal muscle specific antibody.

Publications notables

Autrice	Pubmed ID	Journal	Application
Wenliang Zhang	34580406	Sci Rep	WB
Luchu Zhang	29224337	J Agric Food Chem	WB

Stockage

Stockage:

Stocker à -20°C. Stable pendant un an après l'expédition.

Tampon de stockage:

PBS avec azoture de sodium à 0,02 % et glycérol à 50 % pH 7,3

L'aliquotage n'est pas nécessaire pour le stockage à -20C

***** Les 20ul contiennent 0,1% de BSA.**

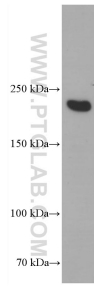
For technical support and original validation data for this product please contact:

T: 1 (888) 4PTGLAB (1-888-478-4522) (toll free in USA), or 1(312) 455-8498 (outside USA)

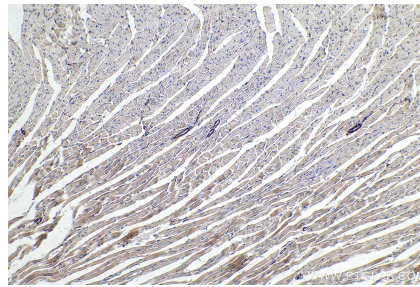
E: proteintech@ptglab.com
W: ptglab.com

This product is exclusively available under Proteintech Group brand and is not available to purchase from any other manufacturer.

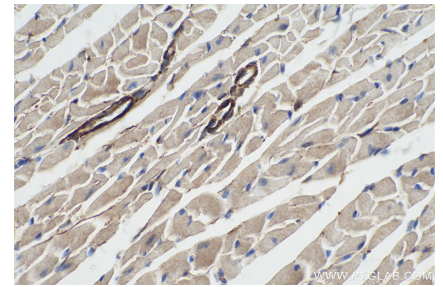
Données de validation sélectionnées



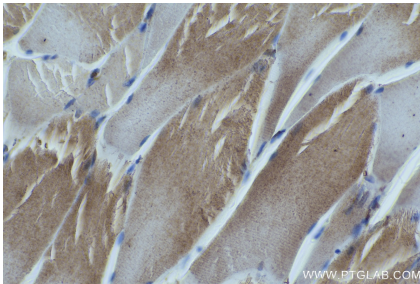
human skeletal muscle tissue were subjected to SDS PAGE followed by western blot with 66212-1-Ig (Myosin 2a antibody) at dilution of 1:100000 incubated at room temperature for 1.5 hours.



Immunohistochemical analysis of paraffin-embedded mouse heart tissue slide using 66212-1-Ig (MYH2-specific antibody) at dilution of 1:4000 (under 10x lens). Heat mediated antigen retrieval with Tris-EDTA buffer (pH 9.0).



Immunohistochemical analysis of paraffin-embedded mouse heart tissue slide using 66212-1-Ig (MYH2-specific antibody) at dilution of 1:4000 (under 40x lens). Heat mediated antigen retrieval with Tris-EDTA buffer (pH 9.0).



Immunohistochemical analysis of paraffin-embedded rat skeletal muscle tissue slide using 66212-1-Ig (MYH2-specific antibody) at dilution of 1:4000 (under 40x lens). Heat mediated antigen retrieval with Tris-EDTA buffer (pH 9.0).