

À des fins de recherche uniquement

Anticorps Monoclonal anti-TLE1

Numéro de catalogue: 66216-1-Ig Phare



Informations de base

Numéro de catalogue: 66216-1-Ig	Numéro d'acquisition GenBank: BC010100	Méthode de purification: Purification par protéine A
Taille: 150ul, Concentration: 3764 µg/ml by Nanodrop and 1047 µg/ml by Bradford method using BSA as the standard;	Identification du gène (NCBI): 7088	CloneNo.: 2F2H11
Hôte: Mouse	Nom complet: transducin-like enhancer of split 1 (E(sp1) homolog, Drosophila)	Dilutions recommandées: WB 1:500-1:2000 IHC 1:50-1:500
Isotype: IgG2b	MW calculé 83 kDa	
Immunogen Catalog Number: AG21327	MW observés: 85-95 kDa	

Applications

Applications testées: FC, IHC, WB, ELISA	Contrôles positifs:
Spécificité de l'espèce: Humain	WB : cellules Jurkat, cellules HEK-293 IHC : tissu de gliome humain,

Remarque-IHC: il est suggéré de démasquer l'antigène avec un tampon de TE buffer pH 9,0; (*) À défaut, le démasquage de l'antigène peut être effectué avec un tampon citrate pH 6,0.

Informations générales

Transducin-like enhancer protein 1(TLE1) is a transcriptional corepressor. It can bind to and regress expression of many transcription factors such as NFκB, which is mediated by FOXA2, CTNNB1 and TCF family member in Wnt signaling. The effects of full-length TLE family members may be modulated by association with dominant-negative AES. Expression of TLE1 is highest in skeletal muscle and liver, moderate in placenta, heart, kidney, and spleen, and weak in all other tissues including brain.

Stockage

Stockage:
Stocker à -20°C. Stable pendant un an après l'expédition.
Tampon de stockage:
PBS avec azoture de sodium à 0,02 % et glycérol à 50 % pH 7,3
L'aliquotage n'est pas nécessaire pour le stockage à -20C

***** Les 20ul contiennent 0,1% de BSA.**

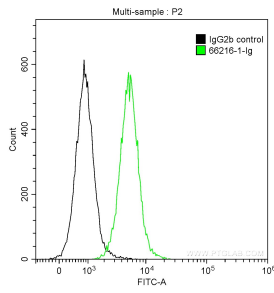
For technical support and original validation data for this product please contact:

T: 1 (888) 4PTGLAB (1-888-478-4522) (toll free
in USA), or 1(312) 455-8498 (outside USA)

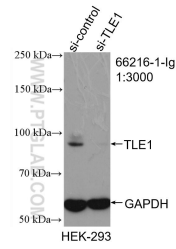
E: proteintech@ptglab.com
W: ptglab.com

This product is exclusively available under Proteintech Group brand and is not available to purchase from any other manufacturer.

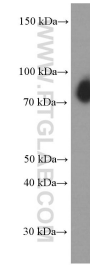
Données de validation sélectionnées



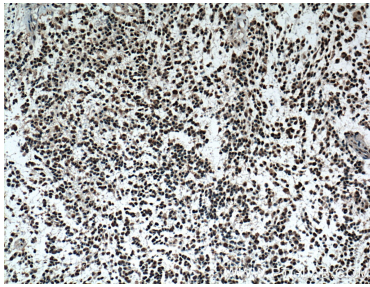
1X10⁶ Jurkat cells were intracellularly stained with 0.2 ug Anti-Human TLE1 (66216-1-Ig, Clone:2F2H11) and CoraLite®488-Conjugated AffiniPure Goat Anti-Mouse IgG(H+L) at dilution 1:1000 (green), and 0.2 ug Mouse IgG2b Isotype Control (66360-3-Ig, Clone: K11B8C4B5) (black). Cells were fixed with 90% MeOH.



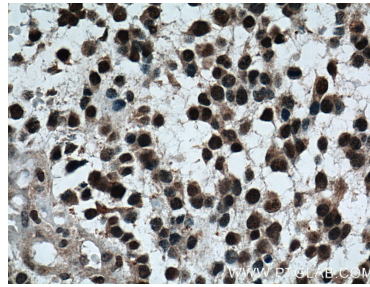
WB result of TLE1 antibody (66216-1-Ig; 1:3000; incubated at room temperature for 1.5 hours) with sh-Control and sh-TLE1 transfected HEK-293 cells.



Jurkat cells were subjected to SDS PAGE followed by western blot with 66216-1-Ig (TLE1 Antibody) at dilution of 1:1000 incubated at room temperature for 1.5 hours.



Immunohistochemical analysis of paraffin-embedded human gliomas tissue slide using 66216-1-Ig (TLE1 Antibody) at dilution of 1:200 (under 10x lens). Heat mediated antigen retrieval with Tris-EDTA buffer (pH 9.0).



Immunohistochemical analysis of paraffin-embedded human gliomas tissue slide using 66216-1-Ig (TLE1 Antibody) at dilution of 1:200 (under 40x lens). Heat mediated antigen retrieval with Tris-EDTA buffer (pH 9.0).