

À des fins de recherche uniquement

Anticorps Monoclonal anti-Alpha E-Catenin



Numéro de catalogue: 66221-1-Ig **3 Publications**

Informations de base

Numéro de catalogue: 66221-1-Ig	Numéro d'acquisition GenBank: BC031262	Méthode de purification: Purification par protéine A
Taille: 150ul , Concentration: 2080 µg/ml by Bradford method using BSA as the standard;	Identification du gène (NCBI): 1495	CloneNo.: 2B7B8
Hôte: Mouse	Nom complet: catenin (cadherin-associated protein), alpha 1, 102kDa	Dilutions recommandées: IHC 1:50-1:1000
Isotype: IgG1	MW calculé 906 aa, 100 kDa	
Immunogen Catalog Number: AG23603	MW observés: 95-100 kDa	

Applications

Applications testées:

FC, IHC, WB, ELISA

Demandes citées:

IHC, WB

Spécificité de l'espèce:

Humain, souris

Espèces citées:

Humain, souris

Remarque-IHC: il est suggéré de démasquer l'antigène avec un tampon de TE buffer pH 9,0; (*) A défaut, 'le démasquage de l'antigène peut être 'effectué avec un tampon citrate pH 6,0.

Contrôles positifs:

WB : cellules NIH/3T3,

IHC : tissu d'estomac humain, tissu de côlon humain

Informations générales

Alpha catenin is an essential component of adherens junctions that connects E-cadherin- β -catenin complexes with the actin cytoskeleton. It also recruits a range of other important proteins to developing intercellular junctions. Three alpha catenins exist in human: alpha-E-catenin, alpha-N-catenin, and alpha-T-catenin, which share substantial amino-acid sequence similarity but have distinct tissue distribution. alpha-E-catenin is ubiquitously expressed, alpha-N-catenin is restricted to neuronal tissue, and alpha-T-catenin is primarily expressed in heart tissue. Reduced levels of alpha-E-catenin protein seem to be characteristic of many different human cancers, including malignant tumours of the breast, colon, stomach, oesophagus, bladder and liver. In addition, the loss of alpha-E-catenin often correlates with the degree of tumour differentiation and metastasis.

Publications notables

Autrice	Pubmed ID	Journal	Application
Xianhua Hu	36367161	Mol Med Rep	WB,IHC
Dan Sun	27835600	Oncotarget	WB
Chisato Sakuma	35216185	Int J Mol Sci	IHC

Stockage

Stockage:

Stocker à -20°C. Stable pendant un an après l'expédition.

Tampon de stockage:

PBS avec azoture de sodium à 0,02 % et glycérol à 50 % pH 7,3

L'aliquotage n'est pas nécessaire pour le stockage à -20C

*** Les 20ul contiennent 0,1% de BSA.

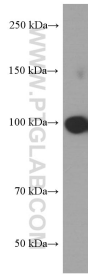
For technical support and original validation data for this product please contact:

T: 1 (888) 4PTGLAB (1-888-478-4522) (toll free
in USA), or 1(312) 455-8498 (outside USA)

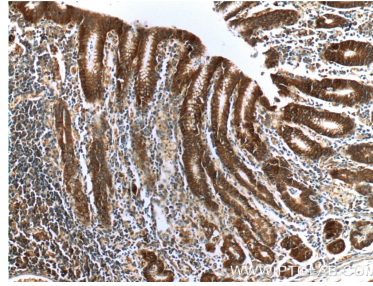
E: proteintech@ptglab.com
W: ptglab.com

This product is exclusively available under Proteintech Group brand and is not available to purchase from any other manufacturer.

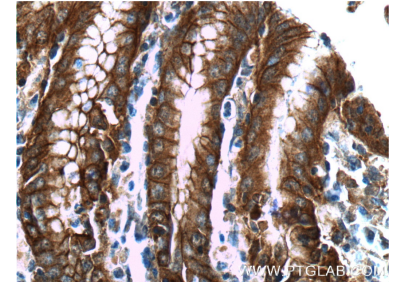
Données de validation sélectionnées



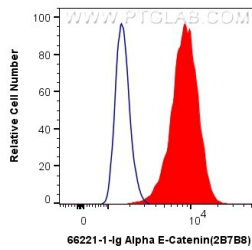
NIH/3T3 cells were subjected to SDS PAGE followed by western blot with 66221-1-Ig (Alpha E catenin antibody) at dilution of 1:1000 incubated at room temperature for 1.5 hours.



Immunohistochemical analysis of paraffin-embedded human stomach tissue slide using 66221-1-Ig (Alpha E catenin antibody) at dilution of 1:200 (under 10x lens).



Immunohistochemical analysis of paraffin-embedded human stomach tissue slide using 66221-1-Ig (Alpha E catenin antibody) at dilution of 1:200 (under 40x lens).



1X10⁶ MCF-7 cells were intracellularly stained with 0.4 ug Anti-Human Alpha E-Catenin (66221-1-Ig, Clone:2B7B8) and Coralite®488-Conjugated AffiniPure Goat Anti-Mouse IgG(H+L) at dilution 1:1000 (red), or 0.4 ug Mouse IgG1 Isotype Control (MOPC-21) (65124-1-Ig, Clone: MOPC-21) (blue). Cells were fixed with 4% PFA and permeabilized with Flow Cytometry Perm Buffer (PF00011-C).