

À des fins de recherche uniquement

Anticorps Monoclonal anti-ORAI1

Numéro de catalogue: 66223-1-Ig

Phare

17 Publications



Informations de base

Numéro de catalogue: 66223-1-Ig	Numéro d'acquisition GenBank: BC015369	Méthode de purification: Purification par protéine A
Taille: 150ul , Concentration: 1900 µg/ml by Nanodrop and 1020 µg/ml by Bradford method using BSA as the standard;	Identification du gène (NCBI): 84876	CloneNo.: 3C12F9
Hôte: Mouse	Nom complet: ORAI calcium release-activated calcium modulator 1	Dilutions recommandées: WB 1:5000-1:30000 IF 1:400-1:1600
Isotype: IgG2a	MW calculé: 301 aa, 33 kDa	
Immunogen Catalog Number: AG18050	MW observés: 32 kDa	

Applications

Applications testées:

IF, WB, ELISA

Demands citées:

IF, WB

Spécificité de l'espèce:

Humain, porc, rat, souris

Espèces citées:

bovin, Humain, rat, singe, souris

Contrôles positifs:

WB : cellules HL-60, cellules 4T1, cellules A375, cellules Daudi, cellules Jurkat, cellules K-562, cellules Raji, cellules Ramos, cellules RAW 264.7, tissu de thymus de porc, tissu splénique de porc, tissu splénique de rat

IF : cellules Jurkat,

Informations générales

Store-operated calcium channels (SOCs) play essential functions in various physiological processes. Orai1 (also named CRACM1) is a critical molecular component of SOCs. Orai1 protein is a 32-55 kDa plasma membrane protein with 4 transmembrane domains. Human patients with a severe combined immunodeficiency (SCID) syndrome possess point mutations in Orai1 gene.

Publications notables

Autrice	Pubmed ID	Journal	Application
Bingbing Zhang	32981726	J Dairy Sci	WB
Yu Chen	34592660	Cell Calcium	WB
Chunming Gu	36109490	Oncogenesis	WB,IF

Stockage

Stockage:

Stocker à -20°C. Stable pendant un an après l'expédition.

Tampon de stockage:

PBS avec azoture de sodium à 0,02 % et glycérol à 50 % pH 7,3

L'aliquotage n'est pas nécessaire pour le stockage à -20C

*** Les 20ul contiennent 0,1% de BSA.

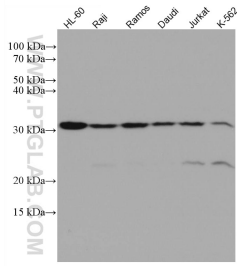
For technical support and original validation data for this product please contact:

T: 1 (888) 4PTGLAB (1-888-478-4522) (toll free in USA), or 1(312) 455-8498 (outside USA)

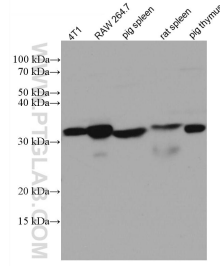
E: proteintech@ptglab.com
W: ptglab.com

This product is exclusively available under Proteintech Group brand and is not available to purchase from any other manufacturer.

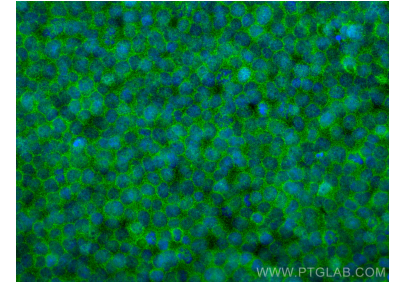
Données de validation sélectionnées



Various lysates were subjected to SDS PAGE followed by western blot with 66223-1-Ig (ORAI1 antibody) at dilution of 1:20000 incubated at room temperature for 1.5 hours.



Various lysates were subjected to SDS PAGE followed by western blot with 66223-1-Ig (ORAI1 antibody) at dilution of 1:20000 incubated at room temperature for 1.5 hours.



Immunofluorescent analysis of (4% PFA) fixed Jurkat cells using ORAI1 antibody (66223-1-Ig, Clone: 3C12F9) at dilution of 1:800 and CoraLite®488-Conjugated AffiniPure Goat Anti-Mouse IgG(H+L).