

À des fins de recherche uniquement

# Anticorps Monoclonal anti-Pikachurin



Numéro de catalogue: 66232-1-Ig

## Informations de base

Numéro de catalogue: 66232-1-Ig	Numéro d'acquisition GenBank: BC033177	Méthode de purification: Purification par protéine A
Taille: 150ul , Concentration: 2800 µg/ml by Nanodrop and 2000 µg/ml by Bradford method using BSA as the standard;	Identification du gène (NCBI): 133584	CloneNo.: 1C6D12
Hôte: Mouse	Nom complet: EGF-like, fibronectin type III and laminin G domains	Dilutions recommandées: WB 1:500-1:2000 IF 1:200-1:800
Isotype: IgG1	MW calculé 111 kDa	
Immunogen Catalog Number: AG6362	MW observés: 111 kDa, 55-60 kDa	

## Applications

Applications testées: IF, WB, ELISA	Contrôles positifs: WB : tissu rétinien humain, cellules PC-3 IF : cellules Y79,
Spécificité de l'espèce: Humain	

## Informations générales

Pikachurin, also known as EGFLAM or FLJ39155, is an extracellular matrix-like retinal protein that has been found to localize in the synaptic cleft of the photoreceptor ribbon synapse (PMID: 18641643). Pikachurin is a dystroglycan-interacting protein and has an essential role in photoreceptor ribbon synapse formation. Pikachurin is a 1017-amino-acid protein with a calculated molecular weight of 111 kDa and high mRNA abundance in retina. This monoclonal antibody detects two bands of 111 kDa and 55-60 kDa. The lower-molecular-weight band has been reported and likely represents a fragment resulting from cleavage of Pikachurin (PMID: 23226524).

## Stockage

Stockage:  
Stocker à -20°C. Stable pendant un an après l'expédition.  
Tampon de stockage:  
PBS avec azoture de sodium à 0,02 % et glycérol à 50 % pH 7,3  
L'aliquotage n'est pas nécessaire pour le stockage à -20C

\*\*\* Les 20ul contiennent 0,1% de BSA.

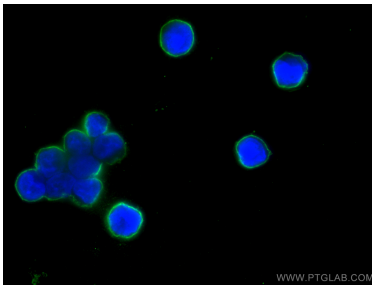
For technical support and original validation data for this product please contact:

T: 1 (888) 4PTGLAB (1-888-478-4522) (toll free  
in USA), or 1(312) 455-8498 (outside USA)

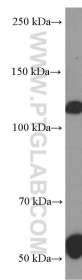
E: proteintech@ptglab.com  
W: ptglab.com

This product is exclusively available under Proteintech Group brand and is not available to purchase from any other manufacturer.

## Données de validation sélectionnées



Immunofluorescent analysis of (4% PFA) fixed Y79 cells using Pikachurin antibody (66232-1-Ig, Clone: 1C6D12) at dilution of 1:400 and CoraLite®488-Conjugated AffiniPure Goat Anti-Mouse IgG(H+L).



human retina tissue were subjected to SDS PAGE followed by western blot with 66232-1-Ig (Pikachurin antibody at dilution of 1:1000 incubated at room temperature for 1.5 hours.