

À des fins de recherche uniquement

Anticorps Monoclonal anti-Beta Tubulin



Numéro de catalogue: 66240-1-Ig **286 Publications**

Informations de base

Numéro de catalogue: 66240-1-Ig	Numéro d'acquisition GenBank: BC000748	Méthode de purification: Purification par protéine A
Taille: 150ul, Concentration: 2000 µg/ml by Nanodrop;	Identification du gène (NCBI): 10381	CloneNo.: 1D4A4
Hôte: Mouse	Nom complet: tubulin, beta 3	Dilutions recommandées: WB 1:20000-1:100000 IP 0.5-4.0 ug for IP and 1:500-1:2000 for WB
Isotype: IgG2a	MW calculé: 450 aa, 50 kDa	IHC 1:20-1:1000 IF 1:200-1:800
Immunogen Catalog Number: AG0117	MW observés: 50-55 kDa	

Applications

Applications testées:

IF, IHC, IP, WB, ELISA

Demandes citées:

IF, IHC, IP, WB

Spécificité de l'espèce:

Humain, namatode, poisson-zèbre, porc, rat, souris

Espèces citées:

Humain, Lapin, poisson-zèbre, porc, poulet, rat, souris

Remarque-IHC: il est suggéré de démasquer l'antigène avec un tampon de TE buffer pH 9.0; (*) À défaut, 'le démasquage de l'antigène peut être effectué avec un tampon citrate pH 6.0.

Contrôles positifs:

WB : cellules HeLa, cellules HEK-293, cellules HepG2, cellules HSC-T6, cellules HT-1080, cellules Jurkat, cellules LNCaP, cellules MCF-7, cellules NCCIT, cellules NIH/3T3, cellules ROS1728

IP : cellules HeLa,

IHC : tissu cérébral humain, tissu cérébral de rat, tissu de cancer du sein humain

IF : cellules HeLa, cellules HepG2

Informations générales

There are five tubulins in human cells: alpha, beta, gamma, delta, and epsilon. Tubulins are conserved across species. They form heterodimers, which multimerize to form a microtubule filament. An alpha and beta tubulin heterodimer is the basic structural unit of microtubules. The heterodimer does not come apart, once formed. The alpha and beta tubulins, which are each about 55 kDa MW, are homologous but not identical. Alpha and beta tubulins have been widely used as loading controls. Tubulin expression may vary according to resistance to antimicrobial and antimetabolic drugs.

Publications notables

Autrice	Pubmed ID	Journal	Application
Yang Wu	31566024	Hum Gene Ther Methods	
Lijuan Hu	29152137	Oncotarget	WB
Zi-Chao Wang	36163178	Cell Death Dis	WB

Stockage

Stockage:

Stocker à -20°C. Stable pendant un an après l'expédition.

Tampon de stockage:

PBS avec azoture de sodium à 0,02 % et glycérol à 50 % pH 7,3

L'aliquotage n'est pas nécessaire pour le stockage à -20C

***** Les 20ul contiennent 0,1% de BSA.**

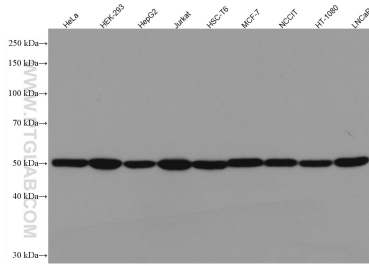
For technical support and original validation data for this product please contact:

T: 1 (888) 4PTGLAB (1-888-478-4522) (toll free in USA), or 1(312) 455-8498 (outside USA)

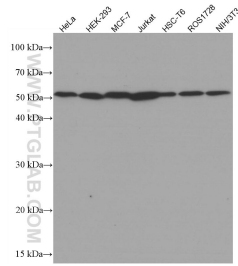
E: proteintech@ptglab.com
W: ptglab.com

This product is exclusively available under Proteintech Group brand and is not available to purchase from any other manufacturer.

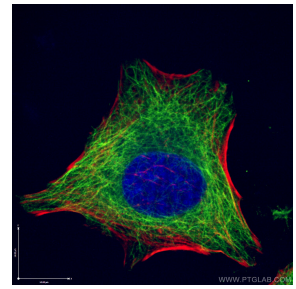
Données de validation sélectionnées



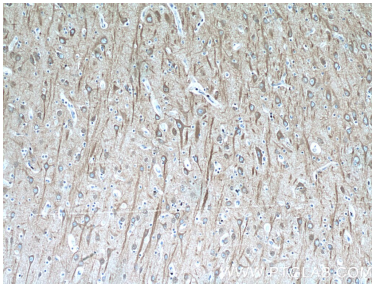
Various lysates were subjected to SDS PAGE followed by western blot with 66240-1-Ig (beta Tubulin antibody) at dilution of 1:200000 incubated at room temperature for 1.5 hours.



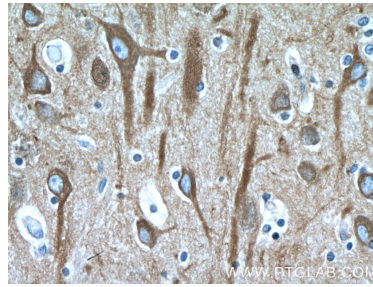
Various lysates were subjected to SDS PAGE followed by western blot with 66240-1-Ig (beta Tubulin antibody) at dilution of 1:100000 incubated at room temperature for 1.5 hours.



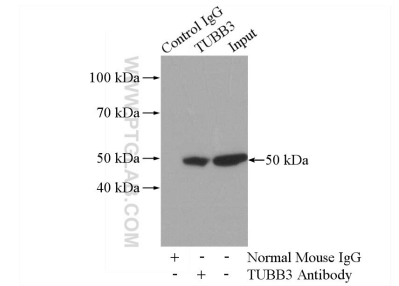
Immunofluorescent analysis of (4% PFA) fixed HeLa cells using 66240-1-Ig (beta Tubulin antibody), at dilution of 1:400 and Coralite® 488-Conjugated AffiniPure Goat Anti-Mouse IgG(H+L). Red: staining with Coralite555-Phalloidin.



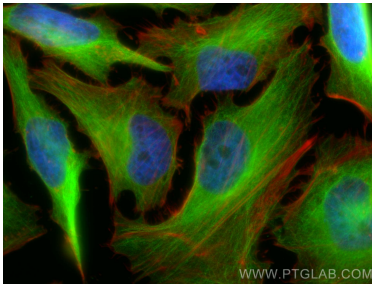
Immunohistochemical analysis of paraffin-embedded human brain tissue slide using 66240-1-Ig (beta Tubulin antibody at dilution of 1:400 (under 10x lens).



Immunohistochemical analysis of paraffin-embedded human brain tissue slide using 66240-1-Ig (beta Tubulin antibody at dilution of 1:400 (under 40x lens).



IP Result of anti-beta Tubulin (IP:66240-1-Ig, 5ug; Detection:66240-1-Ig 1:1000) with HeLa cells lysate 880ug.



Immunofluorescent analysis of (4% PFA) fixed HeLa cells using Beta Tubulin antibody (66240-1-Ig, Clone: 1D4A4) at dilution of 1:400 and Coralite® 488-Conjugated AffiniPure Goat Anti-Mouse IgG(H+L), CL594-Phalloidin (red).