

À des fins de recherche uniquement

# Anticorps Monoclonal anti-C4 Gamma Chain



Numéro de catalogue: 66242-1-Ig

## Informations de base

Numéro de catalogue: 66242-1-Ig	Numéro d'acquisition GenBank: BC012372	Méthode de purification: Purification par protéine A
Taille: 150ul, Concentration: 1500 µg/ml by Nanodrop and 813 µg/ml by Bradford method using BSA as the standard;	Identification du gène (NCBI): 720	CloneNo.: 2G6A7
Hôte: Mouse	Nom complet: complement component 4A (Rodgers blood group)	Dilutions recommandées: WB 1:2000-1:16000 IHC 1:400-1:1600 IF 1:200-1:800
Isotype: IgG1	MW calculé 1744 aa, 193 kDa	
Immunogen Catalog Number: AG10449	MW observés: 31 kDa	

## Applications

### Applications testées:

IF, IHC, WB, ELISA

### Spécificité de l'espèce:

Humain

**Remarque-IHC: il est suggéré de démasquer l'antigène avec un tampon de TE buffer pH 9,0; (\*) À défaut, le démasquage de l'antigène peut être effectué avec un tampon citrate pH 6,0.**

### Contrôles positifs:

WB : tissu plasmatique humain,

IHC : tissu hépatique humain,

IF : tissu hépatique humain,

## Informations générales

Complement C4, a component of the classical complement pathway, has an important role in innate immune function. C4 protein is expressed as a single chain precursor which is proteolytically cleaved into a trimer of alpha, beta, and gamma chains (molecular weights 95, 78, and 31 kDa) prior to secretion. The alpha chain is cleaved to release C4 anaphylatoxin, an antimicrobial peptide and a mediator of local inflammation. This antibody raised against 1543-1744aa of human C4-A protein recognizes C4 gamma chain.

## Stockage

### Stockage:

Stocker à -20°C. Stable pendant un an après l'expédition.

### Tampon de stockage:

PBS avec azoture de sodium à 0,02 % et glycérol à 50 % pH 7,3

L'aliquotage n'est pas nécessaire pour le stockage à -20C

\*\*\* Les 20ul contiennent 0,1% de BSA.

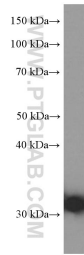
For technical support and original validation data for this product please contact:

T: 1 (888) 4PTGLAB (1-888-478-4522) (toll free  
in USA), or 1(312) 455-8498 (outside USA)

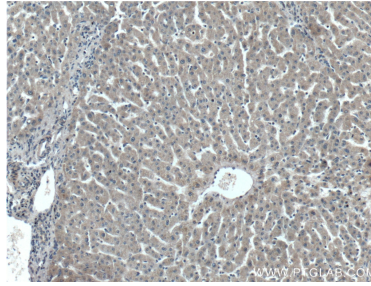
E: proteintech@ptglab.com  
W: ptglab.com

This product is exclusively available under Proteintech Group brand and is not available to purchase from any other manufacturer.

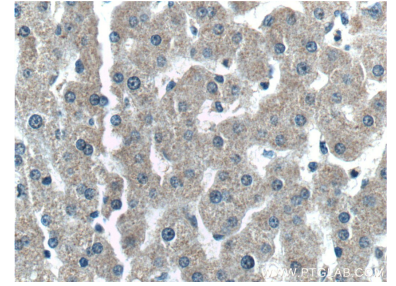
## Données de validation sélectionnées



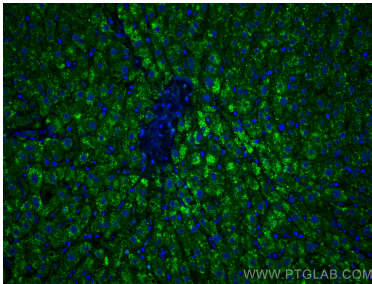
human plasma were subjected to SDS PAGE followed by western blot with 66242-1-Ig (C4 gamma chain antibody) at dilution of 1:8000 incubated at room temperature for 1.5 hours.



Immunohistochemical analysis of paraffin-embedded human liver tissue slide using 66242-1-Ig (C4 gamma chain antibody) at dilution of 1:800 (under 10x lens).



Immunohistochemical analysis of paraffin-embedded human liver tissue slide using 66242-1-Ig (C4 gamma chain antibody) at dilution of 1:800 (under 40x lens).



Immunofluorescent analysis of (4% PFA) fixed human liver tissue using C4 Gamma Chain antibody (66242-1-Ig, Clone: 2G6A7) at dilution of 1:400 and CoraLite@488-Conjugated AffiniPure Goat Anti-Mouse IgG(H+L).