

À des fins de recherche uniquement

Anticorps Monoclonal anti-CRP

Numéro de catalogue: 66250-1-Ig **7 Publications**



Informations de base

Numéro de catalogue: 66250-1-Ig	Numéro d'acquisition GenBank: BC020766	Méthode de purification: Purification par protéine A
Taille: 150ul , Concentration: 3200 µg/ml by 1401 Nanodrop and 1600 µg/ml by Bradford method using BSA as the standard;	Identification du gène (NCBI): 1401	CloneNo.: 3F10A11
Hôte: Mouse	Nom complet: C-reactive protein, pentraxin-related	Dilutions recommandées: WB 1:2000-1:10000 IHC 1:50-1:500 IF 1:50-1:500
Isotype: IgG2a	MW calculé: 224 aa, 25 kDa	
Immunogen Catalog Number: AG9883	MW observés: 27 kDa	

Applications

Applications testées:

IF, IHC, WB, ELISA

Demandes citées:

IF, IHC, WB

Spécificité de l'espèce:

Humain, porc, rat, souris

Espèces citées:

Humain, rat, singe, souris

Remarque-IHC: il est suggéré de démasquer l'antigène avec un tampon de TE buffer pH 9,0; (*) À défaut, 'le démasquage de l'antigène peut être effectué avec un tampon citrate pH 6,0.

Contrôles positifs:

WB : sérum de souris injecté avec des bactéries, sérum de souris injecté avec le tissu bactérien, tissu hépatique de porc, tissu hépatique de rat

IHC : tissu hépatique humain,

IF : tissu hépatique humain,

Informations générales

C-reactive protein (CRP) is an acute-phase serum protein synthesized by the liver in response to interleukin-6 (IL-6) during inflammation. The name of CRP derives from its ability to react with the C polysaccharide of Streptococcus pneumoniae. CRP is an annular, pentameric protein that belongs to the pentraxin family of proteins. CRP displays several functions associated with host defense: it promotes agglutination, bacterial capsular swelling, phagocytosis and complement fixation through its calcium-dependent binding to phosphorylcholine. It is used mainly as a marker of inflammation.

Publications notables

Autrice	Pubmed ID	Journal	Application
Amrita K Cheema	35675853	Int J Radiat Oncol Biol Phys	WB
Shaoning Li	33599398	Brain Behav	WB, IHC
Anika Alberts	33363539	Front Immunol	WB

Stockage

Stockage:

Stocker à -20°C. Stable pendant un an après l'expédition.

Tampon de stockage:

PBS avec azoture de sodium à 0,02 % et glycérol à 50 % pH 7,3

L'aliquotage n'est pas nécessaire pour le stockage à -20C

*** Les 20ul contiennent 0,1% de BSA.

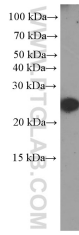
For technical support and original validation data for this product please contact:

T: 1 (888) 4PTGLAB (1-888-478-4522) (toll free in USA), or 1(312) 455-8498 (outside USA)

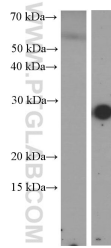
E: proteintech@ptglab.com
W: ptglab.com

This product is exclusively available under Proteintech Group brand and is not available to purchase from any other manufacturer.

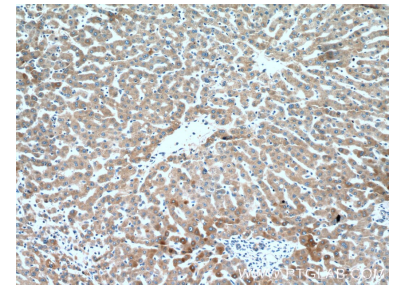
Données de validation sélectionnées



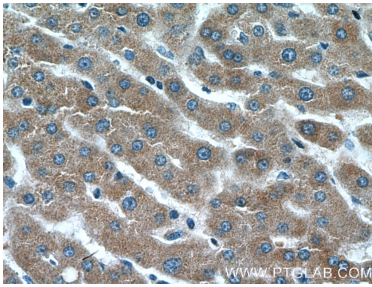
Serum from mouse injected with bacteria were subjected to SDS PAGE followed by western blot with 66250-1-Ig (CRP Antibody) at dilution of 1:2000. Horseradish peroxidase conjugated protein A was used for signal developing instead of secondary antibody incubated at room temperature for 1.5 hours.



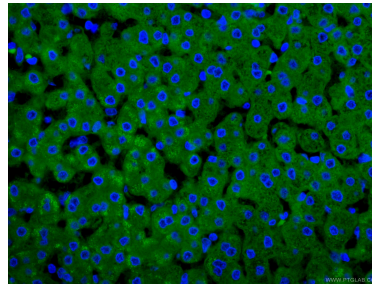
Serum from normal mouse (left) and mouse injected with bacteria (right) were subjected to SDS PAGE followed by western blot with 66250-1-Ig (CRP Antibody) at dilution of 1:1000. Horseradish peroxidase conjugated protein A was used for signal developing instead of secondary antibody incubated at room temperature for 1.5 hours.



Immunohistochemical analysis of paraffin-embedded human liver tissue slide using 66250-1-Ig (CRP Antibody) at dilution of 1:200 (under 10x lens).



Immunohistochemical analysis of paraffin-embedded human liver tissue slide using 66250-1-Ig (CRP Antibody) at dilution of 1:200 (under 40x lens).



Immunofluorescent analysis of (4% PFA) fixed human liver tissue using 66250-1-Ig (CRP antibody) at dilution of 1:100 and Coralite488-Conjugated AffiniPure Goat Anti-Mouse IgG(H+L).