

À des fins de recherche uniquement

Anticorps Monoclonal anti-14-3-3 Sigma



Numéro de catalogue: 66251-1-Ig **2 Publications**

Informations de base

Numéro de catalogue: 66251-1-Ig	Numéro d'acquisition GenBank: BC002995	Méthode de purification: Purification par protéine G
Taille: 150ul, Concentration: 1803 µg/ml by Nanodrop and 1373 µg/ml by Bradford method using BSA as the standard;	Identification du gène (NCBI): 2810	CloneNo.: 3F10D9
Hôte: Mouse	Nom complet: stratifin	Dilutions recommandées: WB 1:2000-1:14000 IHC 1:200-1:8000 IF 1:20-1:200
Isotype: IgG1	MW calculé: 28 kDa	
Immunogen Catalog Number: AG12644	MW observés: 28-30 kDa	

Applications

Applications testées:
FC, IF, IHC, WB, ELISA

Demandes citées:
IF, IHC

Spécificité de l'espèce:
Humain

Espèces citées:
Humain, souris

Remarque-IHC: il est suggéré de démasquer l'antigène avec un tampon de TE buffer pH 9,0; (*) A défaut, le démasquage de l'antigène peut être effectué avec un tampon citrate pH 6,0.

Contrôles positifs:

WB : cellules A431, cellules HeLa, cellules MCF-7

IHC : tissu cutané humain, tissu de cancer du poumon humain, tissu de cancer du sein humain, tissu d'hyperplasie mammaire humaine

IF : cellules MCF-7,

Informations générales

14-3-3 Sigma is a member 14-3-3 family of highly conserved proteins participating in diverse cellular processes including cell cycle progression. It is exclusively present in various epithelial cells, and alternatively named as human epithelial marker (HEM), or stratifin. Alteration of its expression has been linked to cancer.

Publications notables

Autrice	Pubmed ID	Journal	Application
Yoshihiko Kobayashi	32661339	Nat Cell Biol	IF
Xuechao Li	34532265	Transl Androl Urol	IHC

Stockage

Stockage:

Stocker à -20°C. Stable pendant un an après l'expédition.

Tampon de stockage:

PBS avec azoture de sodium à 0,02 % et glycérol à 50 % pH 7,3

L'aliquotage n'est pas nécessaire pour le stockage à -20C

*** Les 20ul contiennent 0,1% de BSA.

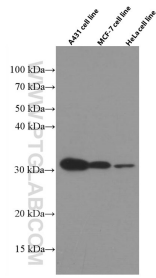
For technical support and original validation data for this product please contact:

T: 1 (888) 4PTGLAB (1-888-478-4522) (toll free in USA), or 1(312) 455-8498 (outside USA)

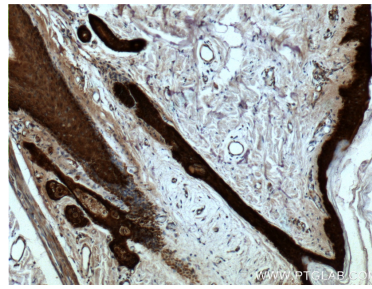
E: proteintech@ptglab.com
W: ptglab.com

This product is exclusively available under Proteintech Group brand and is not available to purchase from any other manufacturer.

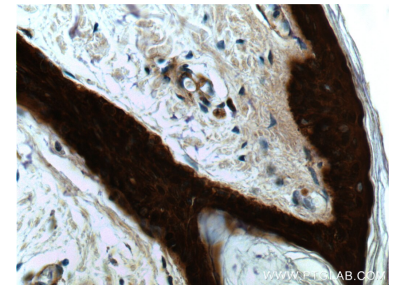
Données de validation sélectionnées



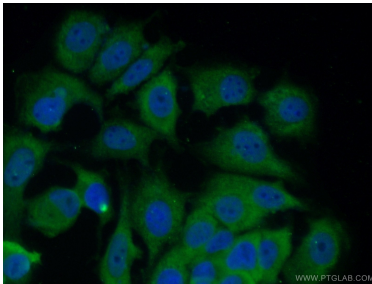
Various cell lysates were subjected to SDS PAGE followed by western blot with 66251-1-Ig (14-3-3 sigma antibody) at dilution of 1:7000 incubated at room temperature for 1.5 hours.



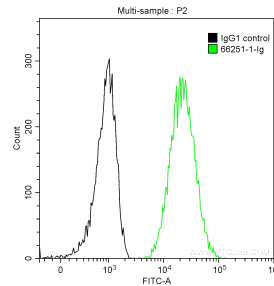
Immunohistochemical analysis of paraffin-embedded human skin tissue slide using 66251-1-Ig (14-3-3 sigma antibody at dilution of 1:2000 (under 10x lens).



Immunohistochemical analysis of paraffin-embedded human skin tissue slide using 66251-1-Ig (14-3-3 sigma antibody at dilution of 1:2000 (under 40x lens).



Immunofluorescent analysis of MCF-7 cells using 66251-1-Ig (14-3-3 sigma antibody) at dilution of 1:100 and Alexa Fluor 488-conjugated AffiniPure Goat Anti-Mouse IgG (H+L).



1×10^6 A431 cells were intracellularly stained with 0.2 ug Anti-Human 14-3-3 Sigma (66251-1-Ig, Clone:3F10D9) and CoraLite@488-Conjugated AffiniPure Goat Anti-Mouse IgG(H+L) at dilution 1:1000 (green), and 0.2 ug Control Antibody. Cells were fixed with 90% MeOH.