

À des fins de recherche uniquement

Anticorps Monoclonal anti- CD11a/Integrin Alpha L



Numéro de catalogue: 66256-1-Ig

Informations de base

Numéro de catalogue: 66256-1-Ig	Numéro d'acquisition GenBank: BC008777	Méthode de purification: Purification par protéine G
Taille: 150ul , Concentration: 1333 µg/ml by Bradford method using BSA as the standard;	Identification du gène (NCBI): 3683	CloneNo.: 1E3H12
Hôte: Mouse	Nom complet: integrin, alpha L (antigen CD11A (p180), lymphocyte function- associated antigen 1; alpha polypeptide)	Dilutions recommandées: IHC 1:20-1:200 IF 1:200-1:800
Isotype: IgG1	MW calculé 129 kDa	
Immunogen Catalog Number: AG7813		

Applications

Applications testées: IF, IHC, ELISA	Contrôles positifs: IHC : tissu d'amygdalite humain, IF : tissu d'amygdalite humain,
Spécificité de l'espèce: Humain	
Remarque-IHC: il est suggéré de démasquer l'antigène avec un tampon de TE buffer pH 9.0; (*) À défaut, 'le démasquage de l'antigène peut être 'effectué avec un tampon citrate pH 6,0.	

Informations générales

CD11a, also known as integrin α L or LFA-1a, is a 170-180 kDa transmembrane glycoprotein that forms a heterodimer with CD18 (PMID: 7027264; 1672643). CD11a/CD18 (LFA-1) is expressed by all leukocytes and mediates cell adhesion through interactions with its ligands, intercellular adhesion molecule 1 (ICAM-1), ICAM-2, and ICAM-3 (PMID: 7479767). CD11a/CD18 also functions in lymphocyte costimulatory signaling (PMID: 1972160).

Stockage

Stockage:
Stocker à -20°C. Stable pendant un an après l'expédition.
Tampon de stockage:
PBS avec azoture de sodium à 0,02 % et glycérol à 50 % pH 7,3
L'aliquotage n'est pas nécessaire pour le stockage à -20C

*** Les 20ul contiennent 0,1% de BSA.

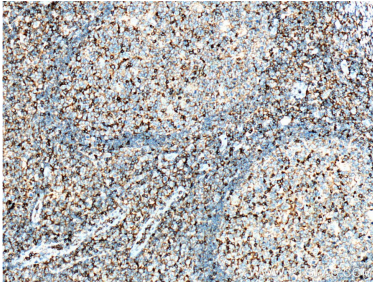
For technical support and original validation data for this product please contact:

T: 1 (888) 4PTGLAB (1-888-478-4522) (toll free
in USA), or 1(312) 455-8498 (outside USA)

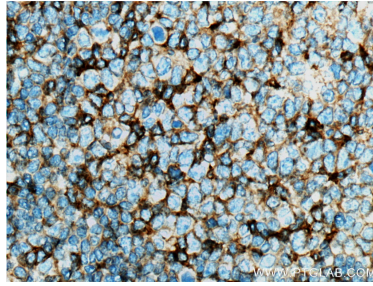
E: proteintech@ptglab.com
W: ptglab.com

This product is exclusively available under Proteintech Group brand and is not available to purchase from any other manufacturer.

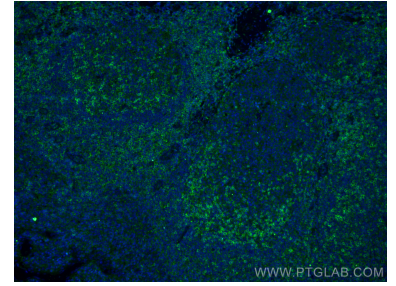
Données de validation sélectionnées



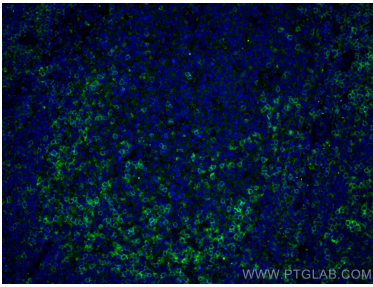
Immunohistochemical analysis of paraffin-embedded human tonsillitis tissue slide using 66256-1-Ig (CD11a/Integrin alpha-L antibody) at dilution of 1:500 (under 10x lens. Heat mediated antigen retrieval with Tris-EDTA buffer (pH 9.0).



Immunohistochemical analysis of paraffin-embedded human tonsillitis tissue slide using 66256-1-Ig (CD11a/Integrin alpha-L antibody) at dilution of 1:500 (under 40x lens. Heat mediated antigen retrieval with Tris-EDTA buffer (pH 9.0).



Immunofluorescent analysis of (4% PFA) fixed human tonsillitis tissue using CD11a/Integrin Alpha L antibody (66256-1-Ig, Clone: 1E3H12) at dilution of 1:400 and CoraLite@488-Conjugated AffiniPure Goat Anti-Mouse IgG(H+L).



Immunofluorescent analysis of (4% PFA) fixed human tonsillitis tissue using CD11a/Integrin Alpha L antibody (66256-1-Ig, Clone: 1E3H12) at dilution of 1:400 and CoraLite@488-Conjugated AffiniPure Goat Anti-Mouse IgG(H+L).