

À des fins de recherche uniquement

# Anticorps Monoclonal anti-PAI-1

Numéro de catalogue: 66261-1-Ig **14 Publications**



## Informations de base

Numéro de catalogue: 66261-1-Ig	Numéro d'acquisition GenBank: BC010860	Méthode de purification: Purification par protéine G
Taille: 150ul , Concentration: 2000 µg/ml by Nanodrop;	Identification du gène (NCBI): 5054	CloneNo.: 1H4A5
Hôte: Mouse	Nom complet: serpin peptidase inhibitor, clade E (nexin, plasminogen activator inhibitor type 1), member 1	Dilutions recommandées: WB 1:5000-1:50000 IHC 1:50-1:500 IF 1:200-1:800
Isotype: IgG1	MW calculé 402 aa, 45 kDa	
Immunogen Catalog Number: AG22411	MW observés: 45-50 kDa	

## Applications

### Applications testées:

IF, IHC, WB, ELISA

### Demandes citées:

IF, IHC, WB

### Spécificité de l'espèce:

Humain, porc, rat, souris

### Espèces citées:

Humain, porc, rat, souris

**Remarque-IHC: il est suggéré de démasquer l'antigène avec un tampon de TE buffer pH 9,0; (\*) A défaut, 'le démasquage de l'antigène peut être 'effectué avec un tampon citrate pH 6,0.**

### Contrôles positifs:

WB : plaquettes de sang périphérique humain, cellules HuH-7, cellules SH-SY5Y, cellules U-251, tissu hépatique de porc, tissu hépatique de rat, tissu hépatique de souris

IHC : tissu rénal humain, tissu pulmonaire de souris

IF : cellules HepG2,

## Informations générales

SERPINE1, also named Plasminogen activator inhibitor type 1 (PAI-1), is a member of the serine protease inhibitor (SERPIN) superfamily. PAI-1 is the principal inhibitor of tissue plasminogen activator (tPA) and uPA, and hence is an inhibitor of fibrinolysis. Defects in this gene are the cause of plasminogen activator inhibitor-1 deficiency (PAI-1 deficiency), and high concentrations of the gene product are associated with thrombophilia. The mature 379-residue protein had a calculated unglycosylated molecular mass of 42.7 kD. Three putative glycosylation sites were found.

## Publications notables

Autrice	Pubmed ID	Journal	Application
Tong Lin	33002827	Phytomedicine	WB
Xinh-Xinh Nguyen	34830489	Int J Mol Sci	WB
Mingming Han	34003736	Am J Respir Cell Mol Biol	WB

## Stockage

### Stockage:

Stocker à -20°C. Stable pendant un an après l'expédition.

### Tampon de stockage:

PBS avec azoture de sodium à 0,02 % et glycérol à 50 % pH 7,3

L'aliquotage n'est pas nécessaire pour le stockage à -20C

\*\*\* Les 20ul contiennent 0,1% de BSA.

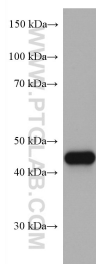
For technical support and original validation data for this product please contact:

T: 1 (888) 4PTGLAB (1-888-478-4522) (toll free in USA), or 1(312) 455-8498 (outside USA)

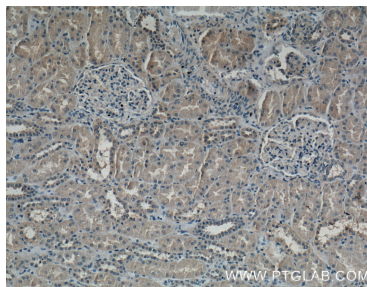
E: proteintech@ptglab.com  
W: ptglab.com

This product is exclusively available under Proteintech Group brand and is not available to purchase from any other manufacturer.

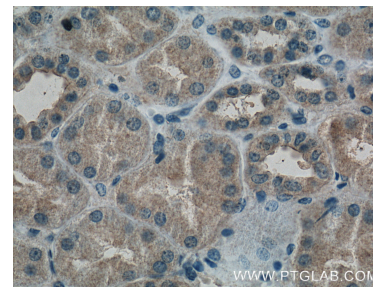
## Données de validation sélectionnées



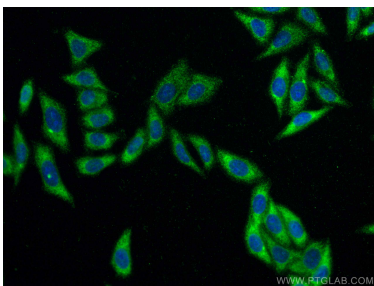
human peripheral blood platelets were subjected to SDS PAGE followed by western blot with 66261-1-Ig (PAI-1 antibody) at dilution of 1:10000 incubated at room temperature for 1.5 hours.



Immunohistochemical analysis of paraffin-embedded human kidney tissue slide using 66261-1-Ig (PAI-1 antibody at dilution of 1:200 (under 10x lens).



Immunohistochemical analysis of paraffin-embedded human kidney tissue slide using 66261-1-Ig (PAI-1 antibody at dilution of 1:200 (under 40x lens).



Immunofluorescent analysis of (-20°C Ethanol) fixed HepG2 cells using PAI-1 antibody (66261-1-Ig, Clone: 1H4A5) at dilution of 1:400 and CoraLite®488-Conjugated AffiniPure Goat Anti-Mouse IgG(H+L).