

À des fins de recherche uniquement

# Anticorps Monoclonal anti-Cytochrome c



Numéro de catalogue: 66264-1-Ig

Phare

79 Publications

## Informations de base

Numéro de catalogue: 66264-1-Ig	Numéro d'acquisition GenBank: BC009578	Méthode de purification: Purification par protéine A
Taille: 150ul, Concentration: 1828 µg/ml by Nanodrop and 1000 µg/ml by Bradford method using BSA as the standard;	Identification du gène (NCBI): 54205	CloneNo.: 2D8D11
Hôte: Mouse	Nom complet: cytochrome c, somatic	Dilutions recommandées: WB 1:5000-1:50000 IHC 1:1000-1:5000 IF 1:20-1:200
Isotype: IgG2a	MW calculé: 12 kDa	
Immunogen Catalog Number: AG24349	MW observés: 12-15 kDa	

## Applications

Applications testées:  
FC, IF, IHC, WB, ELISA

Demandes citées:  
IF, WB

Spécificité de l'espèce:  
Humain, rat, souris

Espèces citées:  
canin, Humain, rat, souris

**Remarque-IHC: il est suggéré de démasquer l'antigène avec un tampon de TE buffer pH 9,0; (\*) À défaut, 'le démasquage de l'antigène peut être effectué avec un tampon citrate pH 6,0.**

Contrôles positifs:

WB : cellules HeLa, cellules HEK-293, cellules HSC-T6, cellules Jurkat, cellules MCF-7, cellules RAW 264.7, cellules ROS1728, tissu cardiaque humain, tissu de muscle squelettique de rat, tissu de muscle squelettique de souris, tissu de muscle squelettique humain

IHC : tissu de cancer du foie humain, tissu de cancer du sein humain

IF : cellules HepG2,

## Informations générales

Cytochrome c is a 12-15 kDa electron transporting protein located in the inner mitochondrial membrane. Upon apoptotic stimulation, cytochrome c can be released from mitochondria into cytoplasm, resulting in caspase-3 activation and apoptosis. Measurement of cytochrome c release from the mitochondria is useful for detection of the onset of apoptosis in cells. In addition, cytochrome c can also leave cells and be detectable in extra-cellular medium of apoptotic cells and serum of cancer patients. The level of serum cytochrome c may serve as a prognostic maker during cancer therapy.

## Publications notables

Autrice	Pubmed ID	Journal	Application
Xudong Yao	30273654	Pharmacol Res	WB
Zi-Chao Wang	36163178	Cell Death Dis	WB
Na Jiang	32975326	Cell Prolif	WB

## Stockage

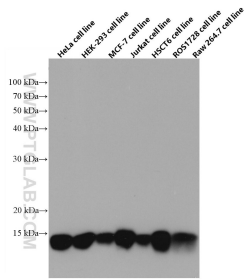
Stockage:  
Stocker à -20°C. Stable pendant un an après l'expédition.  
Tampon de stockage:  
PBS avec azoture de sodium à 0,02 % et glycérol à 50 % pH 7,3  
L'aliquotage n'est pas nécessaire pour le stockage à -20C

\*\*\* Les 20ul contiennent 0,1% de BSA.

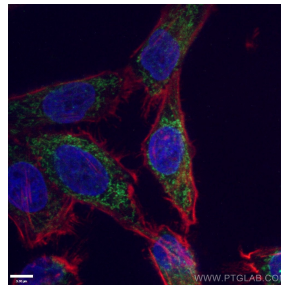
For technical support and original validation data for this product please contact:  
T: 1 (888) 4PTGLAB (1-888-478-4522) (toll free in USA), or 1(312) 455-8498 (outside USA)  
E: proteintech@ptglab.com  
W: ptglab.com

This product is exclusively available under Proteintech Group brand and is not available to purchase from any other manufacturer.

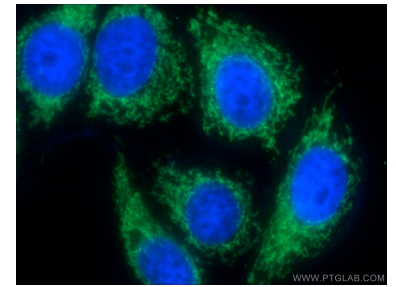
## Données de validation sélectionnées



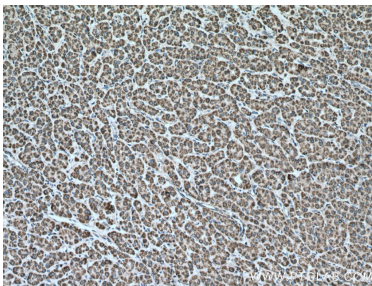
Various cells were subjected to SDS PAGE followed by western blot with 66264-1-Ig (Cytochrome c antibody) at dilution of 1:20000 incubated at room temperature for 1.5 hours.



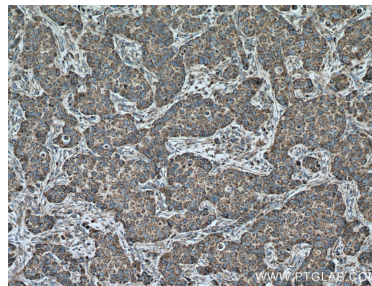
Immunofluorescent analysis of (4% PFA) fixed HepG2 cells using 66264-1-Ig (Cytochrome c antibody) at dilution of 1:100 and CoraLite488-Conjugated AffiniPure Goat Anti-Mouse IgG(H+L). Cells were co-stained with phalloidin in red.



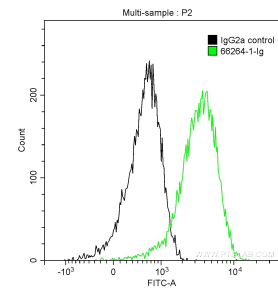
Immunofluorescent analysis of (-20°C Ethanol) fixed HepG2 cells using 66264-1-Ig (Cytochrome c antibody) at dilution of 1:100 and Alexa Fluor 488-conjugated AffiniPure Goat Anti-Mouse IgG(H+L).



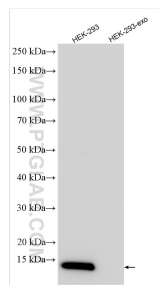
Immunohistochemical analysis of paraffin-embedded human liver cancer tissue slide using 66264-1-Ig (Cytochrome c antibody) at dilution of 1:2000 (under 10x lens). Heat mediated antigen retrieval with Tris-EDTA buffer (pH 9.0).



Immunohistochemical analysis of paraffin-embedded human breast cancer tissue slide using 66264-1-Ig (Cytochrome c antibody) at dilution of 1:5000 (under 10x lens). Heat mediated antigen retrieval with Tris-EDTA buffer (pH 9.0).



1X10<sup>6</sup> HepG2 cells were intracellularly stained with 0.2 ug Anti-Human Cytochrome c (66264-1-Ig, Clone:2D8D11) and CoraLite®488-Conjugated AffiniPure Goat Anti-Mouse IgG(H+L) at dilution 1:1000 (green), and 0.2 ug Mouse IgG2a Isotype Control (66360-2-Ig, Clone: K11A1B2A2) (black). Cells were fixed with 4% PFA and permeabilized with 0.1% TritonX-100.



HEK-293 cells and HEK-293-derived exosomes (HEK-293-exo) were subjected to SDS PAGE followed by western blot with 66264-1-Ig (Cytochrome c antibody) at dilution of 1:5000 incubated at room temperature for 1.5 hours.