

À des fins de recherche uniquement

Anticorps Monoclonal anti-KGA/GAC



Numéro de catalogue: 66265-1-Ig

Phare

8 Publications

Informations de base

Numéro de catalogue: 66265-1-Ig	Numéro d'acquisition GenBank: BC038507	Méthode de purification: Purification par protéine A
Taille: 150ul, Concentration: 1900 µg/ml by Nanodrop and 1000 µg/ml by Bradford method using BSA as the standard;	Identification du gène (NCBI): 2744	CloneNo.: 3A12A1
Hôte: Mouse	Nom complet: glutaminase	Dilutions recommandées: WB 1:5000-1:50000 IHC 1:50-1:500 IF 1:50-1:500
Isotype: IgG2b	MW calculé: 669 aa, 73 kDa	
Immunogen Catalog Number: AG24227	MW observés: 58 kDa, 65 kDa	

Applications

Applications testées:

IF, IHC, WB, ELISA

Demandes citées:

IF, IHC, WB

Spécificité de l'espèce:

Humain, porc, rat, souris

Espèces citées:

Humain, souris

Remarque-IHC: il est suggéré de démasquer l'antigène avec un tampon de TE buffer pH 9,0; (*) A défaut, 'le démasquage de l'antigène peut être 'effectué avec un tampon citrate pH 6,0.

Contrôles positifs:

WB : cellules NIH/3T3, cellules HEK-293, cellules U-251, tissu cérébral humain foetal, tissu hépatique de rat

IHC : tissu de gliome humain, tissu cérébral de souris

IF : tissu cérébral de souris, cellules HepG2, cellules L02

Informations générales

GLS, also named as GLS1 and KIAA0838, belongs to the glutaminase family. It catalyzes the first reaction in the primary pathway for the renal catabolism of glutamine. Glutaminase-, glutamate-, and taurine-immunoreactive neurons develop neurofibrillary tangles in Alzheimer's disease(PMID:1672808).The glutaminase band in AA/C1 cells is more intense than in HT29 cells, in accordance with measurements of glutaminase activity, and had the same molecular mass of approx. 63 kDa. The bands for both cell lines are clearly different in size from both rat liver glutaminase (58 kDa) and rat kidney glutaminase (65 kDa)(PMID:12408749). It also reveals a molecular weight of 83-84 kDa as a phosphate-dependent glutaminase(PMID:447624;7512428). It has 3 isoforms named as KGA, GAM, GAC. This antibody can recognize KGA and GAC.

Publications notables

Autrice	Pubmed ID	Journal	Application
Bin Jiang	35381197	Mol Cell	WB,IF
Yifan Feng	35345831	Oxid Med Cell Longev	IF
Tokio Terado	35894141	Int J Oncol	WB

Stockage

Stockage:

Stocker à -20°C. Stable pendant un an après l'expédition.

Tampon de stockage:

PBS avec azoture de sodium à 0,02 % et glycérol à 50 % pH 7,3

L'aliquotage n'est pas nécessaire pour le stockage à -20C

*** Les 20ul contiennent 0,1% de BSA.

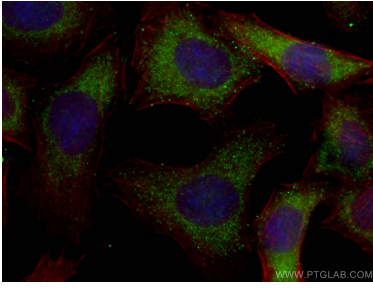
For technical support and original validation data for this product please contact:

T: 1 (888) 4PTGLAB (1-888-478-4522) (toll free in USA), or 1(312) 455-8498 (outside USA)

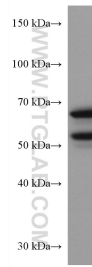
E: proteintech@ptglab.com
W: ptglab.com

This product is exclusively available under Proteintech Group brand and is not available to purchase from any other manufacturer.

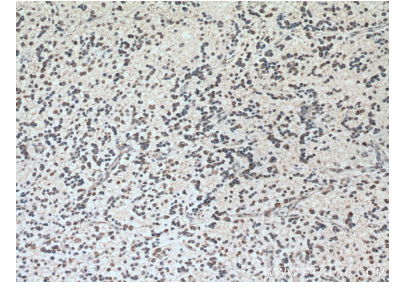
Données de validation sélectionnées



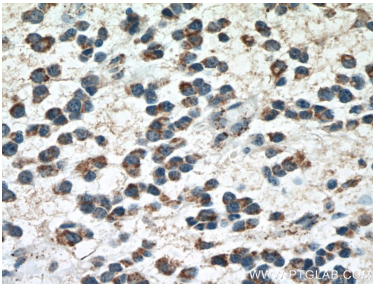
Immunofluorescent analysis of (-20°C Ethanol) fixed L02 cells using KGA/GAC antibody (66265-1-Ig, Clone: 3A12A1) at dilution of 1:400 and CoraLite®488-Conjugated AffiniPure Goat Anti-Mouse IgG(H+L), CL594-Phalloidin (red).



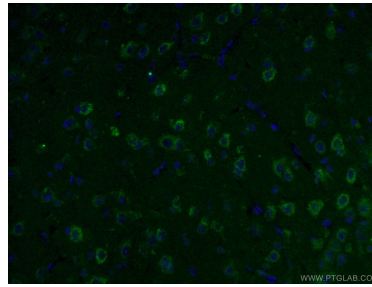
NIH/3T3 cells were subjected to SDS PAGE followed by western blot with 66265-1-Ig (GLS antibody) at dilution of 1:20000 incubated at room temperature for 1.5 hours.



Immunohistochemical analysis of paraffin-embedded human gliomas tissue slide using 66265-1-Ig (GLS antibody) at dilution of 1:200 (under 10x lens. Heat mediated antigen retrieval with Tris-EDTA buffer (pH 9.0).



Immunohistochemical analysis of paraffin-embedded human gliomas tissue slide using 66265-1-Ig (GLS antibody) at dilution of 1:200 (under 40x lens. Heat mediated antigen retrieval with Tris-EDTA buffer (pH 9.0).



Immunofluorescent analysis of (4% PFA) fixed mouse brain tissue using 66265-1-Ig (GLS antibody) at dilution of 1:100 and Alexa Fluor 488-conjugated AffiniPure Goat Anti-Mouse IgG(H+L).