

À des fins de recherche uniquement

Anticorps Monoclonal anti-SRPX2

Numéro de catalogue: 66266-1-Ig

Phare

3 Publications



Informations de base

Numéro de catalogue: 66266-1-Ig	Numéro d'acquisition GenBank: BC020733	Méthode de purification: Purification par protéine A
Taille: 150ul, Concentration: 2900 µg/ml by Nanodrop and 1500 µg/ml by Bradford method using BSA as the standard;	Identification du gène (NCBI): 27286	CloneNo.: 2A1D7
Hôte: Mouse	Nom complet: sushi-repeat-containing protein, X-linked 2	Dilutions recommandées: WB 1:500-1:2000 IHC 1:200-1:800 IF 1:50-1:500
Isotype: IgG2b	MW calculé: 465 aa, 53 kDa	
Immunogen Catalog Number: AG8084	MW observés: 53 kDa	

Applications

Applications testées:

IF, IHC, WB, ELISA

Demandes citées:

IF, IHC, WB

Spécificité de l'espèce:

Humain, porc, souris

Espèces citées:

Humain, souris

Remarque-IHC: il est suggéré de démasquer l'antigène avec un tampon de TE buffer pH 9,0; (*) A défaut, 'le démasquage de l'antigène peut être 'effectué avec un tampon citrate pH 6,0.

Contrôles positifs:

WB : tissu pulmonaire de porc, cellules A549

IHC : tissu cérébral de souris,

IF : cellules A549,

Informations générales

SRPX2 (sushi-repeat-containing protein, X-linked 2) is a secreted protein expressed in neurons of the human adult brain, including the rolandic area (PMID: 20874700). Firstly described as sushi-repeat protein up-regulated in leukemia (SPRUL) in leukemia cells with dysregulated expression at the transcriptional level, SRPX2 has been recently shown as a multifunctional protein. SRPX2 is a ligand for uPAR, the urokinase-type plasminogen activator (uPA) receptor (PMID: 18718938). It is involved in seizure disorders, angiogenesis and cellular adhesion (PMID: 22242148; 19667118; 16497722). The involvement of SRPX2 in disorders of language cortex suggests it has an important role in the perisylvian region critical for language and cognitive development (PMID: 16497722).

Publications notables

Autrice	Pubmed ID	Journal	Application
Meng Zhang	29881288	Onco Targets Ther	WB,IHC
Mehwish Anwer	29663392	J Comp Neurol	WB,IHC,IF
Jianyun Liu	37543430	Aging (Albany NY)	WB

Stockage

Stockage:

Stocker à -20°C. Stable pendant un an après l'expédition.

Tampon de stockage:

PBS avec azoture de sodium à 0,02 % et glycérol à 50 % pH 7,3

L'aliquotage n'est pas nécessaire pour le stockage à -20C

*** Les 20ul contiennent 0,1% de BSA.

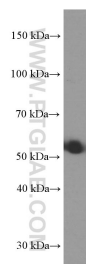
For technical support and original validation data for this product please contact:

T: 1 (888) 4PTGLAB (1-888-478-4522) (toll free in USA), or 1(312) 455-8498 (outside USA)

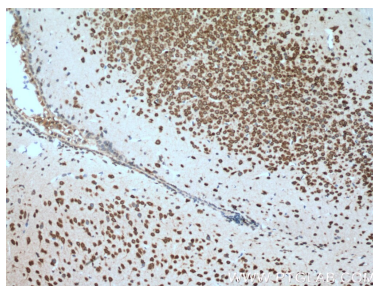
E: proteintech@ptglab.com
W: ptglab.com

This product is exclusively available under Proteintech Group brand and is not available to purchase from any other manufacturer.

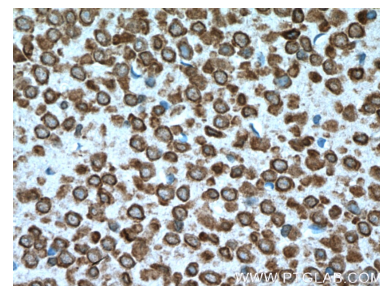
Données de validation sélectionnées



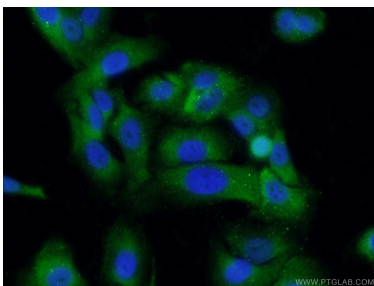
pig lung tissue were subjected to SDS PAGE followed by western blot with 66266-1-Ig (SRPX2 antibody) at dilution of 1:1000 incubated at room temperature for 1.5 hours.



Immunohistochemical analysis of paraffin-embedded mouse brain tissue slide using 66266-1-Ig (SRPX2 Antibody) at dilution of 1:400 (under 10x lens). Heat mediated antigen retrieval with Tris-EDTA buffer (pH 9.0).



Immunohistochemical analysis of paraffin-embedded mouse brain tissue slide using 66266-1-Ig (SRPX2 Antibody) at dilution of 1:400 (under 40x lens). Heat mediated antigen retrieval with Tris-EDTA buffer (pH 9.0).



Immunofluorescent analysis of (-20°C Ethanol) fixed A549 cells using 66266-1-Ig(SRPX2 antibody) at dilution of 1:100 and Alexa Fluor 488-conjugated AffiniPure Goat Anti-Mouse IgG(H+L).