

À des fins de recherche uniquement

Anticorps Monoclonal anti-C1qC

Numéro de catalogue: 66268-1-Ig **3 Publications**



Informations de base

Numéro de catalogue: 66268-1-Ig	Numéro d'acquisition GenBank: BC009016	Méthode de purification: Chromatographie d'affinité thiophilique
Taille: 150ul , Concentration: 680 µg/ml by Bradford method using BSA as the standard;	Identification du gène (NCBI): 714	CloneNo.: 1C5B4
Hôte: Mouse	Nom complet: complement component 1, q subcomponent, C chain	Dilutions recommandées: WB 1:1000-1:4000 IF 1:400-1:1600
Isotype: IgM	MW calculé 245 aa, 26 kDa	
Immunogen Catalog Number: AG10233	MW observés: 26 kDa	

Applications

Applications testées: IF, WB, ELISA	Contrôles positifs: WB : tissu plasmatique humain, IF : cellules HUVEC,
Demandes citées: WB	
Spécificité de l'espèce: Humain	
Espèces citées: Humain, rat	

Informations générales

The first component of complement, C1, is a calcium-dependent complex of the 3 subcomponents C1q, C1r, and C1s. C1q is composed of 18 polypeptide chains: six A-chains, six B-chains, and six C-chains. Each chain contains a collagen-like region located near the N terminus and a C-terminal globular region. Deficiency of C1q has been associated with lupus erythematosus and glomerulonephritis. This antibody is raised against C1qC which is the C-chain polypeptide of human complement subcomponent C1q.

Publications notables

Autrice	Pubmed ID	Journal	Application
Lingyu Pan	35525530	J Ethnopharmacol	WB
Hanji Huang	33707956	Onco Targets Ther	WB
Anika Alberts	32286427	Sci Rep	WB

Stockage

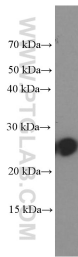
Stockage:
Stocker à -20°C. Stable pendant un an après l'expédition.
Tampon de stockage:
PBS avec azoture de sodium à 0,02 % et glycérol à 50 % pH 7,3
L'aliquotage n'est pas nécessaire pour le stockage à -20C

***** Les 20ul contiennent 0,1% de BSA.**

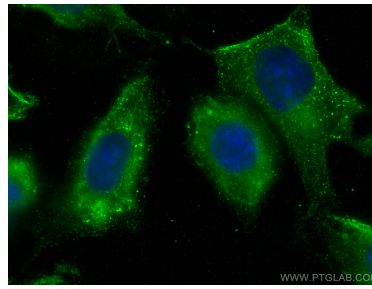
For technical support and original validation data for this product please contact:
T: 1 (888) 4PTGLAB (1-888-478-4522) (toll free in USA), or 1(312) 455-8498 (outside USA)
E: proteintech@ptglab.com
W: ptglab.com

This product is exclusively available under Proteintech Group brand and is not available to purchase from any other manufacturer.

Données de validation sélectionnées



human plasma were subjected to SDS PAGE followed by western blot with 66268-1-Ig (C1QC Antibody) at dilution of 1:2000 incubated at room temperature for 1.5 hours.



Immunofluorescent analysis of (-20°C Methanol) fixed HUVEC cells using C1qC antibody (66268-1-Ig, Clone: 1C5B4) at dilution of 1:800 and CoraLite®488-Conjugated AffiniPure Goat Anti-Mouse IgG(H+L).