

À des fins de recherche uniquement

# Anticorps Monoclonal anti-L2HGDH

Numéro de catalogue: 66269-1-Ig



## Informations de base

Numéro de catalogue: 66269-1-Ig	Numéro d'acquisition GenBank: BC006117	Méthode de purification: Purification par protéine A
Taille: 150ul, Concentration: 2100 µg/ml by Nanodrop and 1320 µg/ml by Bradford method using BSA as the standard;	Identification du gène (NCBI): 79944	CloneNo.: 3D11C2
Hôte: Mouse	Nom complet: L-2-hydroxyglutarate dehydrogenase	Dilutions recommandées: WB 1:500-1:2000 IHC 1:100-1:400 IF 1:200-1:800
Isotype: IgG2a	MW calculé 463aa,50 kDa; 441aa,49 kDa	
Immunogen Catalog Number: AG8382	MW observés: 45 kDa	

## Applications

### Applications testées:

IF, IHC, WB, ELISA

### Spécificité de l'espèce:

Humain, porc

**Remarque-IHC: il est suggéré de démasquer l'antigène avec un tampon de TE buffer pH 9,0; (\*) À défaut, le démasquage de l'antigène peut être effectué avec un tampon citrate pH 6,0.**

### Contrôles positifs:

WB : tissu cérébral de porc, cellules MCF-7

IHC : tissu de cancer du sein humain,

IF : tissu de cancer du sein humain,

## Informations générales

L2HGDH(L-2-hydroxyglutarate dehydrogenase, mitochondrial) is also named as duranin, C14orf160 and belongs to the L2HGDH family. The putative L2HGDH is predicted to be targeted to the mitochondria where its mitochondrial targeting sequence is presumably removed(PMID:16005139). Defects in L2HGDH are the cause of L-2-hydroxyglutaric aciduria (L2HGA). It has 2 isoforms produced by alternative splicing with the molecular weight of 50 kDa and 48 kDa. L2HGDH also can be detected as ~45kD due to the 51aa transit peptide cleaved.

## Stockage

### Stockage:

Stocker à -20°C. Stable pendant un an après l'expédition.

### Tampon de stockage:

PBS avec azoture de sodium à 0,02 % et glycérol à 50 % pH 7,3

L'aliquotage n'est pas nécessaire pour le stockage à -20C

\*\*\* Les 20ul contiennent 0,1% de BSA.

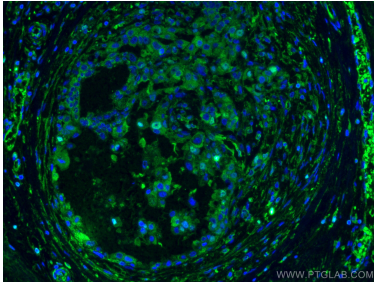
For technical support and original validation data for this product please contact:

T: 1 (888) 4PTGLAB (1-888-478-4522) (toll free  
in USA), or 1(312) 455-8498 (outside USA)

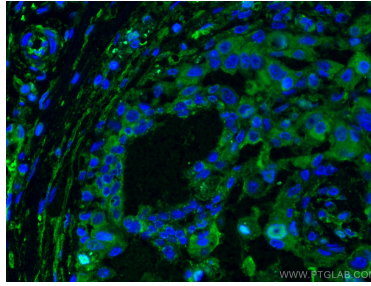
E: proteintech@ptglab.com  
W: ptglab.com

This product is exclusively available under Proteintech Group brand and is not available to purchase from any other manufacturer.

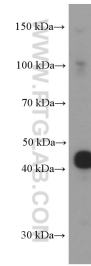
## Données de validation sélectionnées



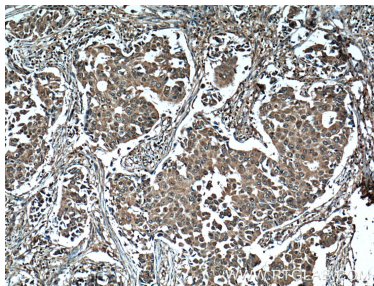
Immunofluorescent analysis of (4% PFA) fixed human breast cancer tissue using L2HGDH antibody (66269-1-Ig, Clone: 3D11C2) at dilution of 1:400 and CoraLite®488-Conjugated AffiniPure Goat Anti-Mouse IgG(H+L).



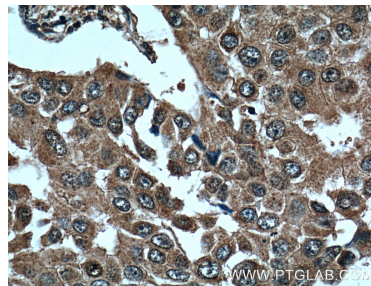
Immunofluorescent analysis of (4% PFA) fixed human breast cancer tissue using L2HGDH antibody (66269-1-Ig, Clone: 3D11C2) at dilution of 1:400 and CoraLite®488-Conjugated AffiniPure Goat Anti-Mouse IgG(H+L).



pig brain tissue were subjected to SDS PAGE followed by western blot with 66269-1-Ig (L2HGDH Antibody) at dilution of 1:1000 incubated at room temperature for 1.5 hours.



Immunohistochemical analysis of paraffin-embedded human breast cancer tissue slide using 66269-1-Ig (L2HGDH Antibody) at dilution of 1:200 (under 10x lens). Heat mediated antigen retrieval with Tris-EDTA buffer (pH 9.0).



Immunohistochemical analysis of paraffin-embedded human breast cancer tissue slide using 66269-1-Ig (L2HGDH Antibody) at dilution of 1:200 (under 40x lens). Heat mediated antigen retrieval with Tris-EDTA buffer (pH 9.0).