

À des fins de recherche uniquement

# Anticorps Monoclonal anti-ERCC1

Numéro de catalogue: 66275-1-Ig **1 Publications**



## Informations de base

<b>Numéro de catalogue:</b> 66275-1-Ig	<b>Numéro d'acquisition GenBank:</b> BC052813	<b>Méthode de purification:</b> Purification par protéine G
<b>Taille:</b> 150ul , Concentration: 1000 µg/ml by Bradford method using BSA as the standard;	<b>Identification du gène (NCBI):</b> 2067	<b>CloneNo.:</b> 1H4D5
<b>Hôte:</b> Mouse	<b>Nom complet:</b> excision repair cross-complementing rodent repair deficiency, complementation group 1 (includes overlapping antisense sequence)	<b>Dilutions recommandées:</b> WB 1:1000-1:4000 IF 1:50-1:500
<b>Isotype:</b> IgG1	<b>MW calculé</b> 33 kDa	
<b>Immunogen Catalog Number:</b> AG6417	<b>MW observés:</b> 38 kDa	

## Applications

<b>Applications testées:</b> IF, WB, ELISA	<b>Contrôles positifs:</b> WB : cellules A431, IF : cellules A431,
<b>Demandes citées:</b> WB	
<b>Spécificité de l'espèce:</b> Humain	
<b>Espèces citées:</b> Humain	

## Informations générales

Excision Repair Cross Complementing 1 (ERCC1) is a structure-specific endonuclease that is responsible for the 5'-incision during DNA repair. It forms a complex with ERCC11, XPF and ERCC4, which are required in both recombinatorial repair and nucleotide excision repair. It has been found that ERCC1, together with RRM1, are determinants of survival after surgical treatment of early-stage, non-small-cell lung cancer. (Ref: Simon, ER. 2005)

## Publications notables

Autrice	Pubmed ID	Journal	Application
Bin Zhu	31541631	Biochem Pharmacol	WB

## Stockage

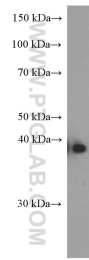
**Stockage:**  
Stocker à -20°C. Stable pendant un an après l'expédition.  
**Tampon de stockage:**  
PBS avec azoture de sodium à 0,02 % et glycérol à 50 % pH 7,3  
L'aliquotage n'est pas nécessaire pour le stockage à -20C

\*\*\* Les 20ul contiennent 0,1% de BSA.

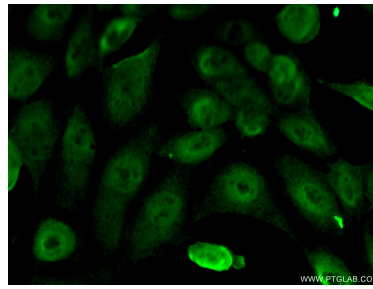
For technical support and original validation data for this product please contact:  
T: 1 (888) 4PTGLAB (1-888-478-4522) (toll free in USA), or 1(312) 455-8498 (outside USA)  
E: proteintech@ptglab.com  
W: ptglab.com

This product is exclusively available under Proteintech Group brand and is not available to purchase from any other manufacturer.

## Données de validation sélectionnées



A431 cells were subjected to SDS PAGE followed by western blot with 66275-1-Ig (ERCC1 Antibody) at dilution of 1:2000 incubated at room temperature for 1.5 hours.



Immunofluorescent analysis of (10% Formaldehyde ) fixed A431 cells using 66275-1-Ig(ERCC 1 antibody) at dilution of 1:50 and Alexa Fluor 488-conjugated AffiniPure Goat Anti-Mouse IgG(H+L).