

À des fins de recherche uniquement

Anticorps Monoclonal anti-CAPG

Numéro de catalogue: 66277-1-Ig Phare



Informations de base

Numéro de catalogue:	66277-1-Ig	Numéro d'acquisition GenBank:	BC000728	Méthode de purification:	Purification par protéine G
Taille:	150ul, Concentration: 1600 µg/ml by Nanodrop and 1000 µg/ml by Bradford method using BSA as the standard;	Identification du gène (NCBI):	822	CloneNo.:	3A5B2
Hôte:	Mouse	Nom complet:	capping protein (actin filament), gelsolin-like	Dilutions recommandées:	WB 1:500-1:2000 IHC 1:50-1:500 IF 1:50-1:500
Isotype:	IgG1	MW calculé:	39 kDa		
Immunogen Catalog Number:	AG24676	MW observés:	39-40 kDa		

Applications

Applications testées:

IF, IHC, WB, ELISA

Spécificité de l'espèce:

Humain

Remarque-IHC: il est suggéré de démasquer l'antigène avec un tampon de TE buffer pH 9,0; (*) À défaut, le démasquage de l'antigène peut être effectué avec un tampon citrate pH 6,0.

Contrôles positifs:

WB : cellules Jurkat, cellules HeLa, cellules HL-60

IHC : tissu de cancer du poumon humain,

IF : cellules HeLa,

Informations générales

CapG (gelsolin-like actin-capping protein) is a member of the gelsolin superfamily proteins, which regulates actin filament length by capping or severing filaments. Studies have shown a role for CapG in regulating cell motility. The expression of CapG is upregulated under hypoxia and in turn increases the motility of cells. Recently it has been reported that the overexpression of CapG is associated with the progression of lung adenocarcinoma as well as lymphatic invasion status of cholangiocarcinoma, which may be used for prognosis of these tumors. (21908955,22155129)

Stockage

Stockage:

Stocker à -20°C. Stable pendant un an après l'expédition.

Tampon de stockage:

PBS avec azoture de sodium à 0,02 % et glycérol à 50 % pH 7,3

L'aliquotage n'est pas nécessaire pour le stockage à -20C

*** Les 20ul contiennent 0,1% de BSA.

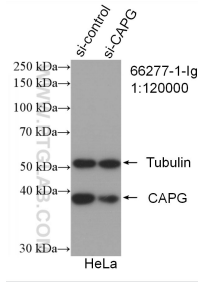
For technical support and original validation data for this product please contact:

T: 1 (888) 4PTGLAB (1-888-478-4522) (toll free in USA), or 1(312) 455-8498 (outside USA)

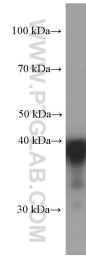
E: proteintech@ptglab.com
W: ptglab.com

This product is exclusively available under Proteintech Group brand and is not available to purchase from any other manufacturer.

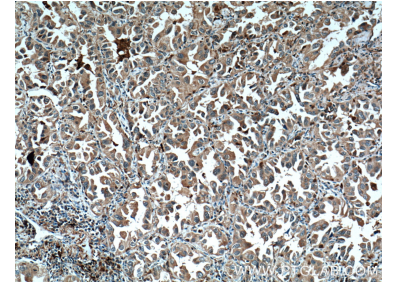
Données de validation sélectionnées



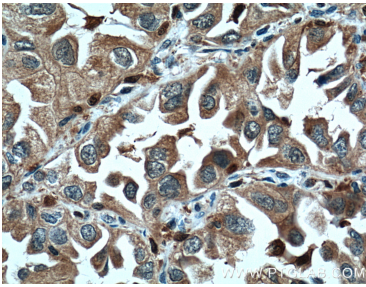
WB result of CAPG antibody (66277-1-Ig; 1:120000); incubated at room temperature for 1.5 hours) with sh-Control and sh-CAPG transfected HeLa cells.



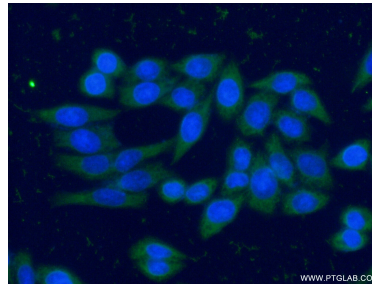
Jurkat cells were subjected to SDS PAGE followed by western blot with 66277-1-Ig (CAPG Antibody) at dilution of 1:1000 incubated at room temperature for 1.5 hours.



Immunohistochemical analysis of paraffin-embedded human lung cancer tissue slide using 66277-1-Ig (CAPG Antibody) at dilution of 1:200 (under 10x lens). Heat mediated antigen retrieval with Tris-EDTA buffer (pH 9.0).



Immunohistochemical analysis of paraffin-embedded human lung cancer tissue slide using 66277-1-Ig (CAPG Antibody) at dilution of 1:200 (under 40x lens). Heat mediated antigen retrieval with Tris-EDTA buffer (pH 9.0).



Immunofluorescent analysis of (-20°C Ethanol) fixed HeLa cells using 66277-1-Ig (CAPG antibody) at dilution of 1:100 and Alexa Fluor 488-conjugated AffiniPure Goat Anti-Mouse IgG(H+L).