

À des fins de recherche uniquement

Anticorps Monoclonal anti-CDK6

Numéro de catalogue: 66278-1-Ig

Phare

11 Publications



Informations de base

Numéro de catalogue: 66278-1-Ig	Numéro d'acquisition GenBank: BC027989	Méthode de purification: Purification par protéine A
Taille: 150ul, Concentration: 1100 µg/ml by Nanodrop and 1000 µg/ml by Bradford method using BSA as the standard;	Identification du gène (NCBI): 1021	CloneNo.: 4B9C11
Hôte: Mouse	Nom complet: cyclin-dependent kinase 6	Dilutions recommandées: WB 1:5000-1:50000 IF 1:20-1:200
Isotype: IgG1	MW calculé: 326 aa, 36 kDa	
Immunogen Catalog Number: AG5600	MW observés: 36-40 kDa	

Applications

Applications testées:

IF, WB, ELISA

Demandes citées:

IF, IHC, WB

Spécificité de l'espèce:

Humain, rat, souris

Espèces citées:

Humain, souris

Contrôles positifs:

WB : cellules HEK-293, cellules C6, cellules HeLa, cellules HepG2, cellules HSC-T6, cellules Jurkat, cellules K-562, cellules NIH/3T3, cellules RAW 264.7, cellules ROS1728, cellules THP-1

IF : cellules HeLa,

Informations générales

CDK6(Cyclin-dependent kinase 6) is involved in initiation and maintenance of cell cycle exit during cell differentiation and it prevents cell proliferation and regulates negatively cell differentiation, but is required for the proliferation of specific cell types. The molecular weight of CDK6 is 36-40 kDa (PMID: 23563707, 8114739).

Publications notables

Autrice	Pubmed ID	Journal	Application
Huan Liu	34491469	Med Oncol	WB
Chenxiang Qi	34650666	Oxid Med Cell Longev	WB
Huan Yue	35543858	Cell Oncol (Dordr)	WB

Stockage

Stockage:

Stocker à -20°C. Stable pendant un an après l'expédition.

Tampon de stockage:

PBS avec azoture de sodium à 0,02 % et glycérol à 50 % pH 7,3

L'aliquotage n'est pas nécessaire pour le stockage à -20C

*** Les 20ul contiennent 0,1% de BSA.

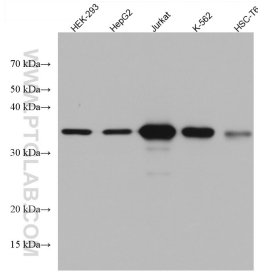
For technical support and original validation data for this product please contact:

T: 1 (888) 4PTGLAB (1-888-478-4522) (toll free in USA), or 1(312) 455-8498 (outside USA)

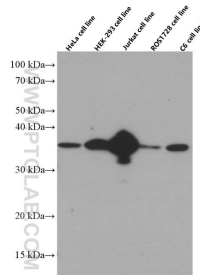
E: proteintech@ptglab.com
W: ptglab.com

This product is exclusively available under Proteintech Group brand and is not available to purchase from any other manufacturer.

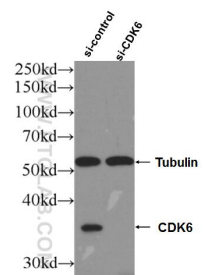
Données de validation sélectionnées



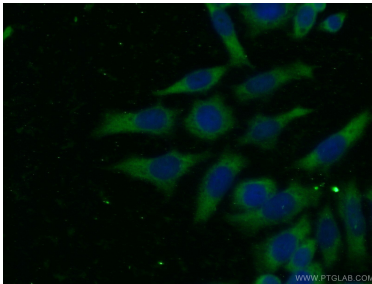
Various lysates were subjected to SDS PAGE followed by western blot with 66278-1-Ig (CDK6 antibody) at dilution of 1:10000 incubated at room temperature for 1.5 hours.



Various lysates were subjected to SDS PAGE followed by western blot with 66278-1-Ig (CDK6 antibody) at dilution of 1:50000 incubated at room temperature for 1.5 hours.



WB result of CDK6 antibody (66278-1-Ig; 1:10000; incubated at room temperature for 1.5 hours) with sh-Control and sh-CDK6 transfected HEK-293 cells.



Immunofluorescent analysis of (-20°C Ethanol) fixed HeLa cells using 66278-1-Ig(CDK6 antibody) at dilution of 1:100 and Alexa Fluor 488-conjugated AffiniPure Goat Anti-Mouse IgG(H+L).