

À des fins de recherche uniquement

Anticorps Monoclonal anti-IGF1R Beta Chain



Numéro de catalogue: 66283-1-Ig **6 Publications**

Informations de base

Numéro de catalogue: 66283-1-Ig	Numéro d'acquisition GenBank: NM_000875	Méthode de purification: Purification par protéine A
Taille: 150ul, Concentration: 1500 µg/ml by Nanodrop and 1000 µg/ml by Bradford method using BSA as the standard;	Identification du gène (NCBI): 3480	CloneNo.: 3C6A11
Hôte: Mouse	Nom complet: IGF I receptor	Dilutions recommandées: WB 1:1000-1:8000 IHC 1:50-1:500
Isotype: IgG1	MW calculé: 155 kDa	
	MW observés: 130-140 kDa	

Applications

Applications testées:

IHC, WB, ELISA

Demandes citées:

IHC, WB

Spécificité de l'espèce:

Humain, rat

Espèces citées:

Humain, rat, souris

Contrôles positifs:

WB : cellules MCF-7, cellules A549, cellules C6, cellules HEK-293, cellules HeLa, cellules HepG2, cellules HUVEC, cellules ROS1728

IHC : tissu de cancer du sein humain, tissu de cancer de l'endomètre humain, tissu de cancer du poumon humain

Remarque-IHC: il est suggéré de démasquer l'antigène avec un tampon de TE buffer pH 9,0; (*) À défaut, le démasquage de l'antigène peut être effectué avec un tampon citrate pH 6,0.

Informations générales

IGF1R, also named as CD221, belongs to the protein kinase superfamily, Tyr protein kinase family and INS receptor subfamily. IGF1R binds INS-like growth factor 1 (IGF1) with a high affinity and IGF2 with a lower affinity. It has a tyrosine-protein kinase activity, which is necessary for the activation of the IGF1-stimulated downstream signaling cascade. When present in a hybrid receptor with INSR, IGF1R binds IGF1. The hybrid receptors composed of IGF1R and INSR isoform Long are activated with a high affinity by IGF1, with low affinity by IGF2 and not significantly activated by INS, and that hybrid receptors composed of IGF1R and INSR isoform Short are activated by IGF1, IGF2 and INS. In contrast, the hybrid receptors composed of IGF1R and INSR isoform Long and hybrid receptors composed of IGF1R and INSR isoform Short have similar binding characteristics, both bind IGF1 and have a low affinity for INS. Defects in IGF1R may be a cause in some cases of resistance to INS-like growth factor 1 (IGF1 resistance).

Publications notables

Autrice	Pubmed ID	Journal	Application
YuanPing Hai	36128805	Thyroid	IHC
Takashi Hara	36130217	Biosci Biotechnol Biochem	WB
Shuai Lian	30423388	Behav Brain Res	WB

Stockage

Stockage:

Stocker à -20°C. Stable pendant un an après l'expédition.

Tampon de stockage:

PBS avec azoture de sodium à 0,02 % et glycérol à 50 % pH 7,3

L'aliquotage n'est pas nécessaire pour le stockage à -20C

*** Les 20ul contiennent 0,1% de BSA.

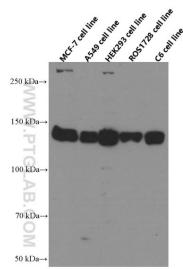
For technical support and original validation data for this product please contact:

T: 1 (888) 4PTGLAB (1-888-478-4522) (toll free in USA), or 1(312) 455-8498 (outside USA)

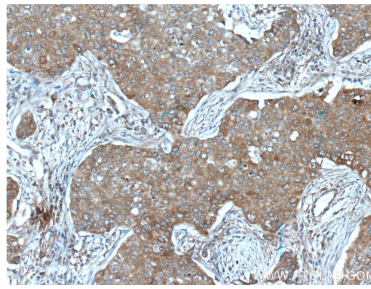
E: proteintech@ptglab.com
W: ptglab.com

This product is exclusively available under Proteintech Group brand and is not available to purchase from any other manufacturer.

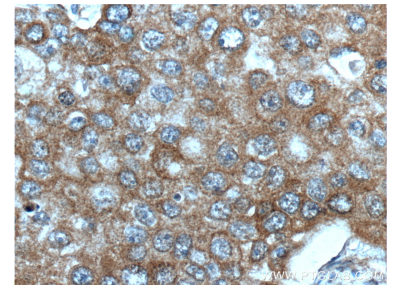
Données de validation sélectionnées



Various lysates were subjected to SDS PAGE followed by western blot with 66283-1-Ig (IGF1R beta chain antibody at dilution of 1:4000 incubated at room temperature for 1.5 hours.



Immunohistochemical analysis of paraffin-embedded human breast cancer tissue slide using 66283-1-Ig (IGF1R beta chain antibody at dilution of 1:200 (under 10x lens). Heat mediated antigen retrieval with Tris-EDTA buffer (pH 9.0).



Immunohistochemical analysis of paraffin-embedded human breast cancer tissue slide using 66283-1-Ig (IGF1R beta chain antibody at dilution of 1:200 (under 40x lens). Heat mediated antigen retrieval with Tris-EDTA buffer (pH 9.0).